

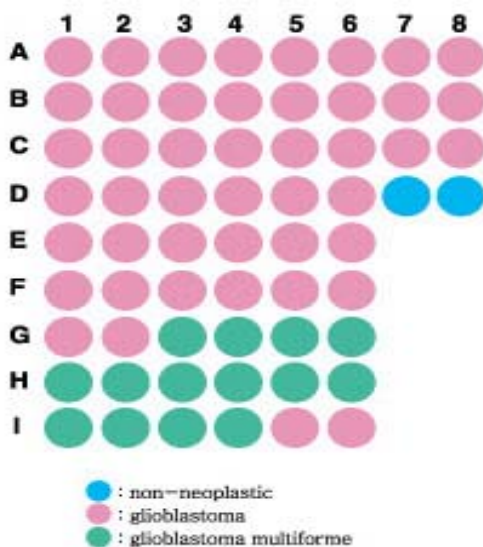
Specifications:

- No. of cases: 30
- Tissue type: Brain cancer tissues: Glioblastoma
- No. of spots: 2 spots from each cancer case (60 spots)
2 non-neoplastic spots (2 spots)
- Total spots: 62
- Corresponding normal tissues with cancers: Yes
- Diameter: 1.0 mm

Documents:

- Product specification: layout, summary of tissue spots
- H&E stained images
- Detailed pathological information

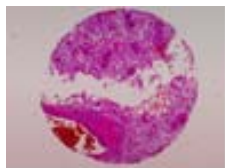
Layout:



Summary of tissue spots

No.	Coordinate	Sex	Age	Key Word	
1	A	1, 2	f	68	glioblastoma
2		3, 4	f	67	glioblastoma
3		5, 6	m	54	glioblastoma
4		7, 8	f	58	glioblastoma
5	B	1, 2	f	76	glioblastoma
6		3, 4	m	61	glioblastoma
7		5, 6	f	47	glioblastoma
8		7, 8	f	74	glioblastoma
9	C	1, 2	f	65	glioblastoma
10		3, 4	m	39	glioblastoma
11		5, 6	f	69	glioblastoma
12		7, 8	f	36	glioblastoma
13	D	1, 2	f	59	glioblastoma
14		3, 4	f	70	glioblastoma
15		5, 6	m	44	glioblastoma
16		7			non-neoplastic, from C5, 6
17		8			non-neoplastic, from F3, 4
18	E	1, 2	f	60	glioblastoma
19		3, 4	f	57	glioblastoma
20		5, 6	f	58	glioblastoma
21	F	1, 2	f	59	glioblastoma
22		3, 4	m	44	glioblastoma
23		5, 6	f	69	glioblastoma
24	G	1, 2	f	76	glioblastoma
25		3, 4	f	64	glioblastoma multiforme
26		5, 6	m	62	glioblastoma multiforme
27	H	1, 2	f	33	glioblastoma multiforme
28		3, 4	m	53	glioblastoma multiforme
29		5, 6	f	37	glioblastoma multiforme
30	I	1, 2	f	48	glioblastoma multiforme
31		3, 4	f	30	glioblastoma multiforme
32		5, 6	f	68	glioblastoma

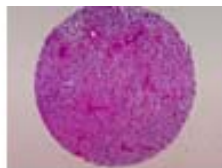
QC sheet_LOT#122120312101
Hematoxylin and Eosin staining



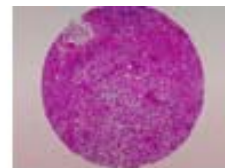
A1



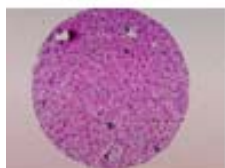
A2



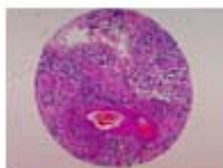
A3



A4



A5



A6



A7



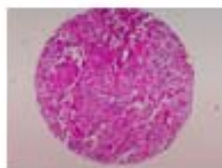
A8



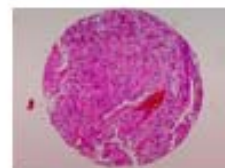
B1



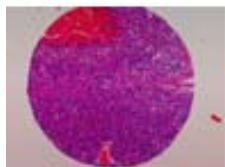
B2



B3



B4



B5



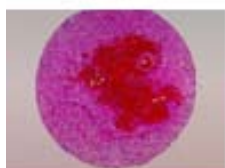
B6



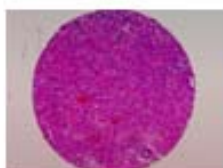
B7



B8



C1



C2



C3



C4



C5



C6



C7



C8

QC sheet_LOT#122120312101
Hematoxylin and Eosin staining



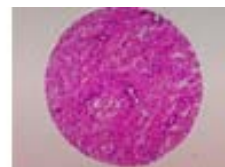
D1



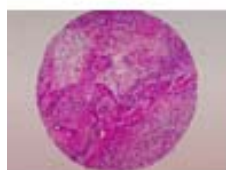
D2



D3



D4



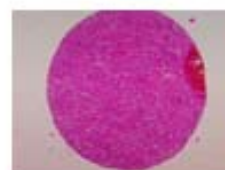
D5



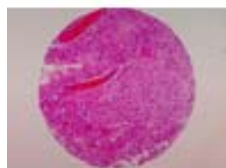
D6



D7



D8



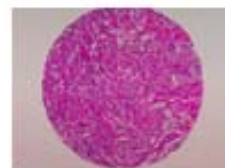
E1



E2



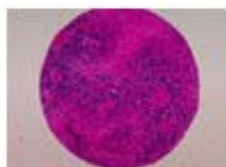
E3



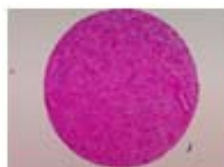
E4



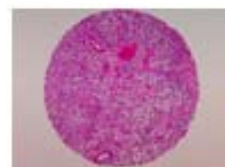
E5



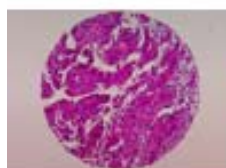
E6



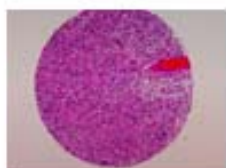
F1



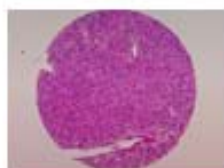
F2



F3



F4



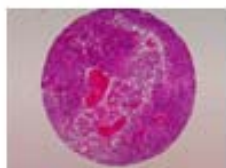
F5



F6



G1



G2



G3

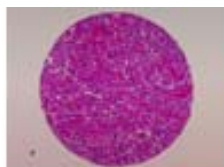


G4

QC sheet_LOT#122120312101
Hematoxylin and Eosin staining



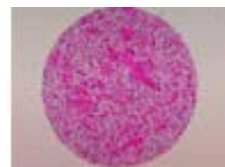
G5



G6



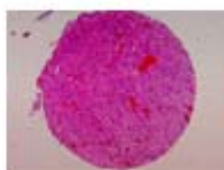
H1



H2



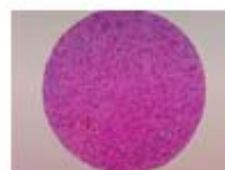
H3



H4



H5



H6



I1



I2



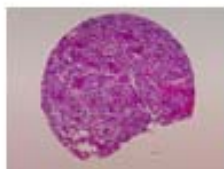
I3



I4



I5



I6

A221 : Brain cancer tissues- Glioblastoma

No.	Coordinate		Sex	Age	Key Word	Histological Diagonosis
1	A	1, 2	f	68	glioblastoma	Brain, left frontal lobe, tumor removal and biopsy: glioblastoma
2	A	3, 4	f	67	glioblastoma	Brain, right occipitoparietal, frozen biopsy: glioblastoma
3	A	5, 6	m	54	glioblastoma	Brain, left frontal area, tumor removal: glioblastoma
4	A	7, 8	f	58	glioblastoma	Brain, removal (frozen section): glioblastoma
5	B	1, 2	f	76	glioblastoma	Brain, left occiput, frozen excision: glioblastoma
6	B	3, 4	m	61	glioblastoma	Brain, parietal lobe, frozen biopsy: glioblastoma
7	B	5, 6	f	47	glioblastoma	Brain tumor, Biopsy: glioblastoma-gliosarcoma.
8	B	7, 8	f	74	glioblastoma	Brain, lateral ventricle and corpus callosum, removal: consistent with glioblastoma
9	C	1, 2	f	65	glioblastoma	Brain, frontal area, excision: glioblastoma
10	C	3, 4	m	39	glioblastoma	Brain, parietal lobe, right, curettage: glioblastoma with meningeal involvement
11	C	5, 6	f	69	glioblastoma	Brain, right frontotemporal, tumor removal: glioblastoma Note: the results of immunohistochemical study were as follows : GFAP(+), vimentin(+), actin(-).
12	C	7, 8	f	36	glioblastoma	Brain, right fronto-pairtal lobe, frozen biopsy: glioblastoma multiforme Brain, labelled as tumor wall: anaplastic astrocytoma Brain, labelled as tumor margin: involvement of high grade astrocytoma
13	D	1, 2	f	59	glioblastoma	Brain, left frontal lobe, tumor removal: glioblastoma
14	D	3, 4	f	70	glioblastoma	Brain, frontotemporal area, removal: glioblastoma (with gemistocytic
15	D	5, 6	m	44	glioblastoma	Brain, frontal lobe, tumor removal: glioblastoma
16	D	7			non-neoplastic	non-neoplastic, from C5, 6
17	D	8			non-neoplastic	non-neoplastic, from F3, 4
18	E	1, 2	f	60	glioblastoma	Brain, left parietooccipital area, removal: astrocytoma grade 4
19	E	3, 4	f	57	glioblastoma	Brain mass, left fronto-temporal, removal: recurrent glioblastoma (with gliosarcomatous component)
20	E	5, 6	f	58	glioblastoma	Brain, left temporal lobe, removal: glioblastoma
21	F	1, 2	f	59	glioblastoma	Brain, tumor removal: glioblastoma multiforme
22	F	3, 4	m	44	glioblastoma	Brain, occipital, frozen biopsy: glioblastoma multiforme Note: results of immunohistochemical stains: GFAP(+), S-100(+), HMB45(-
23	F	5, 6	f	69	glioblastoma	Brain, left temporal, frozen biopsy: glioblastoma multiforme

A221 : Brain cancer tissues- Glioblastoma

No.	Coordinate		Sex	Age	Key Word	Histological Diagonosis
24	G	1, 2	f	76	glioblastoma	Lt parieto-occipital mass, craniotomy with tumor removal: glioblastoma multiforme
25	G	3, 4	f	64	glioblastoma multiforme	Brain, tumor removal: 1) choroid plexus: choroid plexus with foci of calcification 2) cerebellum: glioblastoma multiforme
26	G	5, 6	m	62	glioblastoma multiforme	Brain, tumor removal: glioblastoma multiforme Note: immunohistochemical stain results: GFAP(+), Pan-cytokeratin: weakly positive, HMB45(-). Special stain results: Mucicarmine(-).
27	H	1, 2	f	33	glioblastoma multiforme	Brain, tumor removal: glioblastoma multiforme arising in anaplastic gemistocytic astrocytoma
28	H	3, 4	m	53	glioblastoma multiforme	Brain, tumor removal: glioblastoma multiforme
29	H	5, 6	f	37	glioblastoma multiforme	Brain, frontal, tumor removal: glioblastoma multiforme
30	I	1, 2	f	48	glioblastoma multiforme	Brain mass, site not specified, removal: glioblastoma multiforme Resection margins, aterolateral and posteriolateral: positive for
31	I	3, 4	f	30	glioblastoma multiforme	Cerebral mass, removal: glioblastoma multiforme
32	I	5, 6	f	68	glioblastoma	Brain mass, Lt Frontal, Removal: glioblastoma