

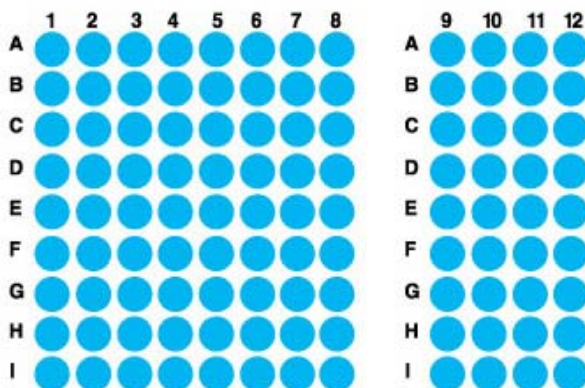
Specifications:

- No. of cases: 54
- Tissue type: Normal tissues – more than single spot
- No. of spots: 2 spots from each normal case (108 spots)
- Total spots: 108
- Diameter: 1.0 mm

Documents:

- Product specification: layout, summary of tissue spots
- H&E stained images
- Detailed pathological information

Layout:



Summary of tissue spots

NO.	Coordinate	Sex	Age	Key Word	
1	A	1	m	64	Cerebral cortex
2		2	m	64	Cerebral cortex
3		3	m	64	Cerebellum
4		4	m	64	Cerebellum
5		5	m	64	Basal ganglia
6		6	m	64	Basal ganglia
7		7	m	64	Hippocampus
8		8	m	64	Hippocampus
9		9	m	0	Spinal cord
10		10	m	1	Spinal cord
11		11	f	29	Peripheral nerve
12		12	f	30	Peripheral nerve
13	B	1	f	1	Spleen
14		2	f	1	Spleen
15		3	f	44	Tonsil
16		4	f	44	Tonsil
17		5	f	45	Thymus
18		6	f	45	Thymus
19		7	m	70	Fat
20		8	m	70	Lymph node
21		9	m	22	Blood vessel(Endothelium)
22		10	m	22	Blood vessel(Endothelium)
23		11	f	49	Skin
24		12	f	49	Skin
25	C	1	f	38	Breast
26		2	f	38	Breast
27		3	m	41	Salivary gland
28		4	m	41	Salivary gland
29		5	f	48	Thyroid gland
30		6	f	48	Thyroid gland
31		7	f	67	Adrenal cortex
32		8	f	67	Adrenal cortex
33		9	f	63	Adrenal medulla
34		10	f	63	Adrenal medulla
35		11	f	1	Pancreas
36		12	f	1	Pancreas

Summary of tissue spots

NO.	Coordinate	Sex	Age	Key Word	
37	D	1	m	64	Heart
38		2	m	64	Heart
39		3	m	69	Lung
40		4	m	69	Lung
41		5	m	69	Bronchus
42		6	m	69	Bronchus
43		7	m	55	Liver
44		8	m	55	Liver
45		9	f	46	Bile duct
46		10	f	46	Bile duct
47		11	f	31	Gallbladder
48		12	f	31	Gallbladder
49	E	1	f	54	Kidney (Cortex)
50		2	f	54	Kidney (Cortex)
51		3	f	54	Kidney (Medulla)
52		4	f	54	Kidney (Medulla)
53		5	m	18	Ureter
54		6	m	18	Ureter
55		7	m	45	Bladder
56		8	m	45	Bladder
57		9	m	52	Prostate
58		10	m	52	Prostate
59		11	m	20	Testis
60		12	m	20	Testis
61	F	1	f	27	Ovary
62		2	f	27	Ovary
63		3	f	45	Uterus (Excervix)
64		4	f	45	Uterus (Excervix)
65		5	f	45	Uterus (Endocervix)
66		6	f	45	Uterus (Endocervix)
67		7	f	44	Uterus (Pro-Endometrium)
68		8	f	44	Uterus (Pro-Endometrium)
69		9	f	53	Uterus (Sec-Endometrium)
70		10	f	53	Uterus (Sec-Endometrium)
71		11	f	32	Uterus (Decidua)
72		12	f	32	Uterus (Decidua)

Summary of tissue spots

NO.	Coordinate	Sex	Age	Key Word	
73	G	1	f	71	Uterus (Myometrium)
74		2	f	71	Uterus (Myometrium)
75		3	f	34	Fallopian tube
76		4	f	34	Fallopian tube
77		5	f	40	Placenta (Amnio)
78		6	f	40	Placenta (Amnio)
79		7	f	40	Placenta (Chorion villi)
80		8	f	40	Placenta (Chorion villi)
81		9	f	40	Placenta (Basal plate)
82		10	f	40	Placenta (Basal plate)
83		11	f	29	Umbilical cord
84		12	f	29	Umbilical cord
85	H	1	f	42	Esophagus
86		2	f	42	Esophagus
87		3	f	37	Intestinal metaplasia
88		4	f	37	Intestinal metaplasia
89		5	f	46	Stomach(Fundic gland)
90		6	f	46	Stomach(Fundic gland)
91		7	m	66	Stomach(Pyloric gland)
92		8	m	66	Stomach(Pyloric gland)
93		9	f	65	Duodenum
94		10	f	65	Duodenum
95		11	m	66	Jeuni
96		12	m	66	Jeuni
97	I	1	m	46	Ileum
98		2	m	46	Ileum
99		3	m	43	Appendix
100		4	m	43	Appendix
101		5	m	36	Colon
102		6	m	36	Colon
103		7	m	69	Rectum
104		8	m	69	Rectum
105		9	m	46	Cecum
106		10	m	46	Cecum
107		11	m	59	Skeletal muscle
108		12	m	59	Skeletal muscle

QC sheet_LOT#112120309251
Haematoxylin and Eosin staining



A1



A2



A3



A4



A5



A6



A7



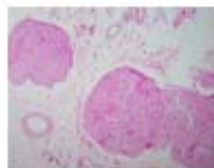
A8



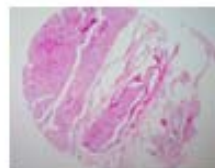
A9



A10



A11



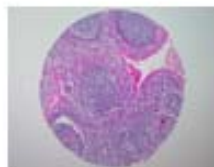
A12



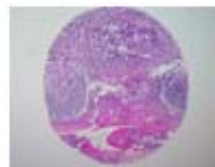
B1



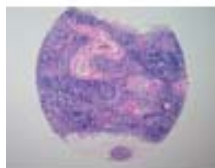
B2



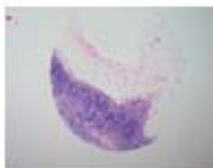
B3



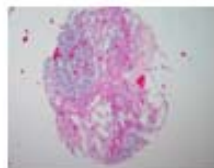
B4



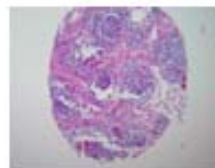
B5



B6



B7



B8



B9



B10



B11



B12

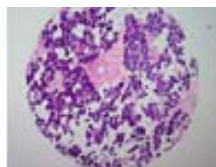
QC sheet_LOT#112120309251
Haematoxylin and Eosin staining



C1



C2



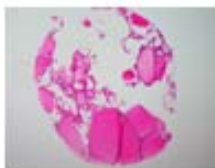
C3



C4



C5



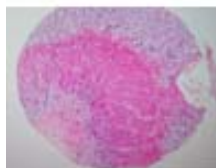
C6



C7



C8



C9



C10



C11



C12



D1



D2



D3



D4



D5



D6



D7



D8



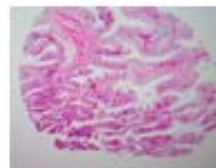
D9



D10



D11



D12

QC sheet_LOT#112120309251
Haematoxylin and Eosin staining



E1



E2



E3



E4



E5



E6



E7



E8



E9



E10



E11



E12



F1



F2



F3



F4



F5



F6



F7



F8



F9



F10



F11



F12

QC sheet_LOT#112120309251

Haematoxylin and Eosin staining



G1



G2



G3



G4



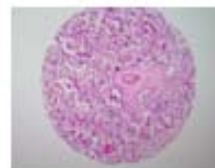
G5



G6



G7



G8



G9



G10



G11



G12



H1



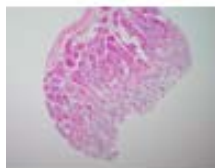
H2



H3



H4



H5



H6



H7



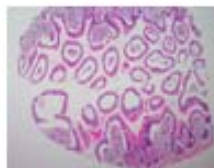
H8



H9



H10



H11



H12

QC sheet_LOT#112120309251
Haematoxylin and Eosin staining



I 1



I 2



I 3



I 4



I 5



I 6



I 7



I 8



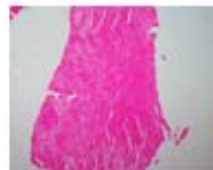
I 9



I 10



I 11



I 12

A103(I): Normal tissues, more than single spot

No.	Coordinate		Sex	Age	Key Word	Histological Diagnosis
1	A	1	m	64	Cerebral cortex	non-neoplastic
2	A	2	m	64	Cerebral cortex	non-neoplastic
3	A	3	m	64	Cerebellum	non-neoplastic
4	A	4	m	64	Cerebellum	non-neoplastic
5	A	5	m	64	Basal ganglia	non-neoplastic
6	A	6	m	64	Basal ganglia	non-neoplastic
7	A	7	m	64	Hippocampus	non-neoplastic
8	A	8	m	64	Hippocampus	non-neoplastic
9	A	9	m	0	Spinal cord	non-neoplastic
10	A	10	m	1	Spinal cord	non-neoplastic
11	A	11	f	29	Peripheral nerve	non-neoplastic
12	A	12	f	30	Peripheral nerve	non-neoplastic
13	B	1	f	1	Spleen	non-neoplastic
14	B	2	f	1	Spleen	non-neoplastic
15	B	3	f	44	Tonsil	non-neoplastic
16	B	4	f	44	Tonsil	non-neoplastic
17	B	5	f	45	Thymus	non-neoplastic
18	B	6	f	45	Thymus	non-neoplastic
19	B	7	m	70	Fat	non-neoplastic
20	B	8	m	70	Lymph node	non-neoplastic
21	B	9	m	22	Blood vessel(Endothelium)	non-neoplastic
22	B	10	m	22	Blood vessel(Endothelium)	non-neoplastic
23	B	11	f	49	Skin	non-neoplastic
24	B	12	f	49	Skin	non-neoplastic
25	C	1	f	38	Breast	non-neoplastic
26	C	2	f	38	Breast	non-neoplastic
27	C	3	m	41	Salivary gland	non-neoplastic
28	C	4	m	41	Salivary gland	non-neoplastic
29	C	5	f	48	Thyroid gland	non-neoplastic
30	C	6	f	48	Thyroid gland	non-neoplastic

A103(I): Normal tissues, more than single spot

No.	Coordinate		Sex	Age	Key Word	Histological Diagnosis
31	C	7	f	67	Adrenal cortex	non-neoplastic
32	C	8	f	67	Adrenal cortex	non-neoplastic
33	C	9	f	63	Adrenal medulla	non-neoplastic
34	C	10	f	63	Adrenal medulla	non-neoplastic
35	C	11	f	1	Pancreas	non-neoplastic
36	C	12	f	1	Pancreas	non-neoplastic
37	D	1	m	64	Heart	non-neoplastic
38	D	2	m	64	Heart	non-neoplastic
39	D	3	m	69	Lung	non-neoplastic
40	D	4	m	69	Lung	non-neoplastic
41	D	5	m	69	Bronchus	non-neoplastic
42	D	6	m	69	Bronchus	non-neoplastic
43	D	7	m	55	Liver	non-neoplastic
44	D	8	m	55	Liver	non-neoplastic
45	D	9	f	46	Bile duct	non-neoplastic
46	D	10	f	46	Bile duct	non-neoplastic
47	D	11	f	31	Gallbladder	non-neoplastic
48	D	12	f	31	Gallbladder	non-neoplastic
49	E	1	f	54	Kidney (Cortex)	non-neoplastic
50	E	2	f	54	Kidney (Cortex)	non-neoplastic
51	E	3	f	54	Kidney (Medulla)	non-neoplastic
52	E	4	f	54	Kidney (Medulla)	non-neoplastic
53	E	5	m	18	Ureter	non-neoplastic
54	E	6	m	18	Ureter	non-neoplastic
55	E	7	m	45	Bladder	non-neoplastic
56	E	8	m	45	Bladder	non-neoplastic
57	E	9	m	52	Prostate	non-neoplastic
58	E	10	m	52	Prostate	non-neoplastic
59	E	11	m	20	Testis	non-neoplastic
60	E	12	m	20	Testis	non-neoplastic

A103(I): Normal tissues, more than single spot

No.	Coordinate		Sex	Age	Key Word	Histological Diagnosis
61	F	1	f	27	Ovary	non-neoplastic
62	F	2	f	27	Ovary	non-neoplastic
63	F	3	f	45	Uterus (Excervix)	non-neoplastic
64	F	4	f	45	Uterus (Excervix)	non-neoplastic
65	F	5	f	45	Uterus (Endocervix)	non-neoplastic
66	F	6	f	45	Uterus (Endocervix)	non-neoplastic
67	F	7	f	44	Uterus (Pro-Endometrium)	non-neoplastic
68	F	8	f	44	Uterus (Pro-Endometrium)	non-neoplastic
69	F	9	f	53	Uterus (Sec-Endometrium)	non-neoplastic
70	F	10	f	53	Uterus (Sec-Endometrium)	non-neoplastic
71	F	11	f	32	Uterus (Decidua)	non-neoplastic
72	F	12	f	32	Uterus (Decidua)	non-neoplastic
73	G	1	f	71	Uterus (Myometrium)	non-neoplastic
74	G	2	f	71	Uterus (Myometrium)	non-neoplastic
75	G	3	f	34	Fallopian tube	non-neoplastic
76	G	4	f	34	Fallopian tube	non-neoplastic
77	G	5	f	40	Placenta (Amnio)	non-neoplastic
78	G	6	f	40	Placenta (Amnio)	non-neoplastic
79	G	7	f	40	Placenta (Chorion villi)	non-neoplastic
80	G	8	f	40	Placenta (Chorion villi)	non-neoplastic
81	G	9	f	40	Placenta (Basal plate)	non-neoplastic
82	G	10	f	40	Placenta (Basal plate)	non-neoplastic
83	G	11	f	29	Umbilical cord	non-neoplastic
84	G	12	f	29	Umbilical cord	non-neoplastic
85	H	1	f	42	Esophagus	non-neoplastic
86	H	2	f	42	Esophagus	non-neoplastic
87	H	3	f	37	Intestinal metaplasia	non-neoplastic
88	H	4	f	37	Intestinal metaplasia	non-neoplastic
89	H	5	f	46	Stomach(Fundic gland)	non-neoplastic
90	H	6	f	46	Stomach(Fundic gland)	non-neoplastic

A103(I): Normal tissues, more than single spot

No.	Coordinate		Sex	Age	Key Word	Histological Diagnosis
91	H	7	m	66	Stomach(Pyloric gland)	non-neoplastic
92	H	8	m	66	Stomach(Pyloric gland)	non-neoplastic
93	H	9	f	65	Duodenum	non-neoplastic
94	H	10	f	65	Duodenum	non-neoplastic
95	H	11	m	66	Jeuni	non-neoplastic
96	H	12	m	66	Jeuni	non-neoplastic
97	I	1	m	46	Ileum	non-neoplastic
98	I	2	m	46	Ileum	non-neoplastic
99	I	3	m	43	Appendix	non-neoplastic
100	I	4	m	43	Appendix	non-neoplastic
101	I	5	m	36	Colon	non-neoplastic
102	I	6	m	36	Colon	non-neoplastic
103	I	7	m	69	Rectum	non-neoplastic
104	I	8	m	69	Rectum	non-neoplastic
105	I	9	m	46	Cecum	non-neoplastic
106	I	10	m	46	Cecum	non-neoplastic
107	I	11	m	59	Skeletal muscle	non-neoplastic
108	I	12	m	59	Skeletal muscle	non-neoplastic