

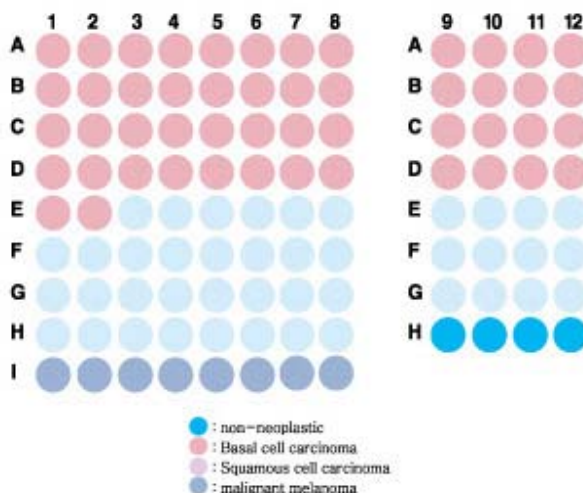
Specifications:

- No. of cases: 50
- Tissue type: Skin cancer tissues
- No. of spots: 2 spots from each cancer case (100 spots)
4 non-neoplastic spots (4 spots)
- Total spots: 104
- Corresponding normal tissues with cancers: Yes
- Diameter: 1.0 mm

Documents:

- Product specification: layout, summary of tissue spots
- H&E stained images
- Detailed pathological information

Layout:



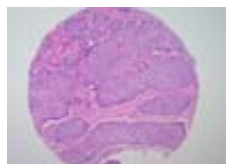
Summary of tissue spots

No.	Coordinate	Sex	Age	Key Word	TNM Stage	
1	A	1,2	m	87	basal cell carcinoma	T4N0M0 (III)
2		3,4	m	43	basal cell carcinoma	T1N0M0 (I)
3		5,6	f	72	basal cell carcinoma	T1N0M0 (I)
4		7,8	m	83	basal cell carcinoma	T1N0M0 (I)
5		9,10	m	45	basal cell carcinoma	T1N0M0 (I)
6		11,12	m	51	basal cell carcinoma	T1N0M0 (I)
7	B	1,2	m	59	basal cell carcinoma	T1N0M0 (I)
8		3,4	f	76	basal cell carcinoma	T1N0M0 (I)
9		5,6	m	81	basal cell carcinoma	T1N0M0 (I)
10		7,8	m	70	basal cell carcinoma	T1N0M0 (I)
11		9,10	m	76	basal cell carcinoma	T1N0M0 (I)
12		11,12	m	69	basal cell carcinoma seborrheic keratosis	T2N0M0 (II)
13	C	1,2	m	66	basal cell carcinoma	T2N0M0 (II)
14		3,4	m	62	basal cell carcinoma	T2N0M0 (II)
15		5,6	f	74	basal cell carcinoma	T1N0M0 (I)
16		7,8	f	82	basal cell carcinoma	T1N0M0 (I)
17		9,10	m	49	basal cell carcinoma	T1N0M0 (I)
18		11,12	m	41	basal cell carcinoma	T1N0M0 (I)
19	D	1,2	m	45	basal cell carcinoma	T1N0M0 (I)
20		3,4	m	49	basal cell carcinoma	T1N0M0 (I)
21		5,6	f	75	basal cell carcinoma	T1N0M0 (I)
22		7,8	m	73	basal cell carcinoma	T1N0M0 (I)
23		9,10	m	46	basal cell carcinoma	T1N0M0 (I)
24		11,12	m	72	basal cell carcinoma	T1N0M0 (I)
25	E	1,2	m	88	basal cell carcinoma	T1N0M0 (I)
26		3,4	f	78	squamous cell carcinoma	T NxM1 (IV)
27		5,6	m	75	squamous cell carcinoma	T4N0M0 (III)
28		7,8	m	66	squamous cell carcinoma	T2N0M0 (II)
29		9,10	m	53	squamous cell carcinoma	T2N0M0 (II)
30		11,12	m	74	squamous cell carcinoma	T2N0M0 (II)

Summary of tissue spots

No.	Coordinate	Sex	Age	Key Word	TNM Stage
31	1,2	m	48	squamous cell carcinoma wart carcinoma Bowen's disease lipogranuloma CIS paraffinoma	T2N0M0 (II)
32	3,4	m	78	squamous cell carcinoma	T2N0M0 (II)
33	5,6	m	53	squamous cell carcinoma	T3N0M0 (II)
34	7,8	m	72	squamous cell carcinoma	T3N0M0 (II)
35	9,10	f	63	metastatic carcinoma squamous cell carcinoma	T2N1M1 (IV)
36	11,12	f	85	squamous cell carcinoma	T1N0M0 (I)
37	1,2	f	48	squamous cell carcinoma	TisN0M0 (0)
38	3,4	m	78	squamous cell carcinoma	T1N0M0 (I)
39	5,6	m	74	squamous cell carcinoma	T1N0M0 (I)
40	7,8	m	29	squamous cell carcinoma	T3N0M0 (II)
41	9,10	f	74	squamous cell carcinoma	T1N0M0 (I)
42	11,12	f	71	squamous cell carcinoma	T1N0M0 (I)
43	1,2	m	44	squamous cell carcinoma	T4N2bM1 (IV)
44	3,4	f	66	squamous cell carcinoma	T1N0M0 (I)
45	5,6	m	67	squamous cell carcinoma	T1N0M0 (I)
46	7,8	m	72	malignant melanoma	T4aN2bM0 (III)
47	9			non-neoplastic, from A 9,10	
48	10			non-neoplastic, from B 7,8	
49	11			non-neoplastic, from D 1,2	
50	12			non-neoplastic, from D 5,6	
51	1,2	f	49	malignant melanoma	T4aN3M1 (IV)
52	3,4	m	79	malignant melanoma	T4aN3M1a (IV)
53	5,6	m	56	malignant melanoma	N1M1 (IV)
54	7,8	m	51	malignant melanoma	T4aN2bM1 (IV)

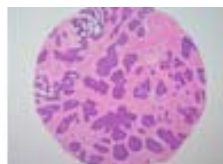
QC sheet_LOT#122120310121 Hematoxylin and Eosin staining



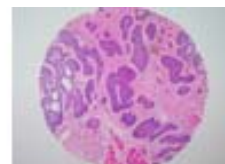
A1



A2



A3



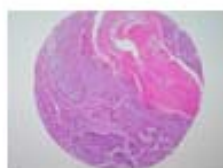
A4



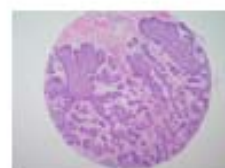
A5



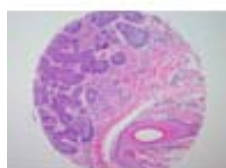
A6



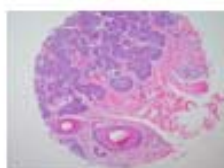
A7



A8



A9



A10



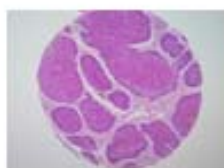
A11



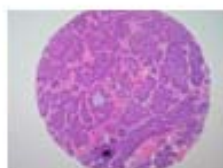
A12



B1



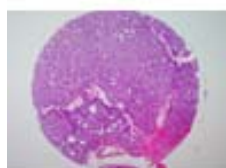
B2



B3



B4



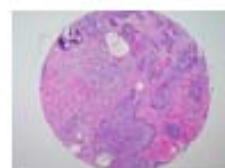
B5



B6



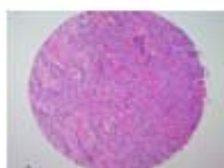
B7



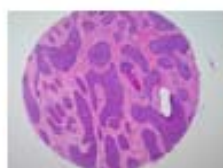
B8



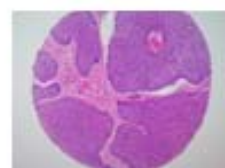
B9



B10



B11

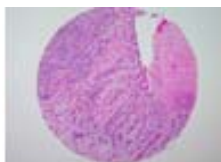


B12

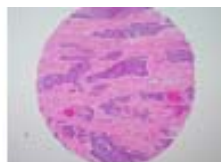
QC sheet_LOT#122120310121 Hematoxylin and Eosin staining



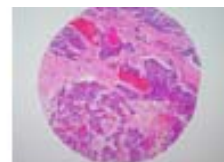
C1



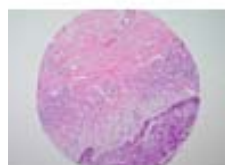
C2



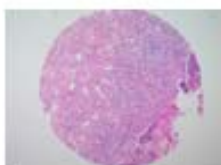
C3



C4



C5



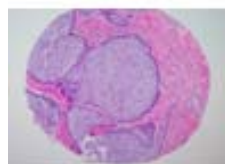
C6



C7



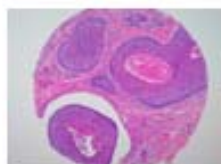
C8



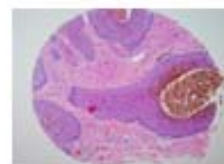
C9



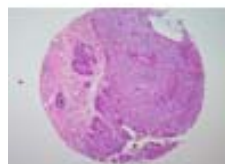
C10



C11



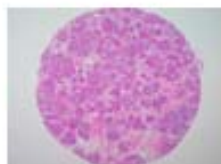
C12



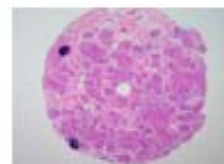
D1



D2



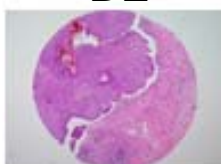
D3



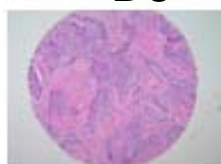
D4



D5



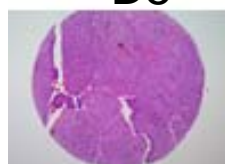
D6



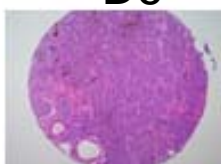
D7



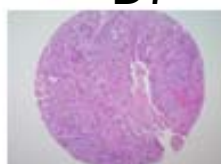
D8



D9



D10



D11

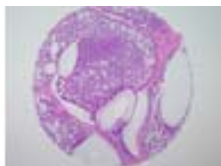


D12

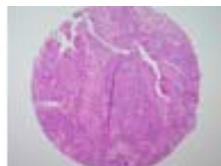
QC sheet_LOT#122120310121 Hematoxylin and Eosin staining



E1



E2



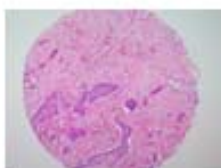
E3



E4



E5



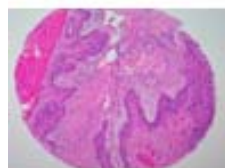
E6



E7



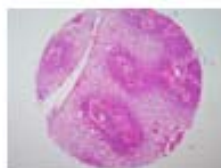
E8



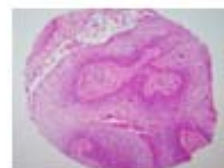
E9



E10



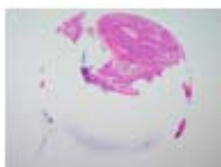
E11



E12



F1



F2



F3



F4



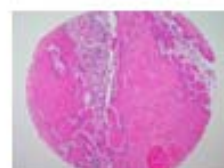
F5



F6



F7



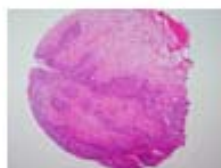
F8



F9



F10



F11

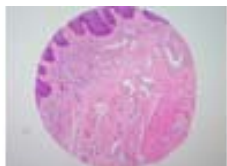


F12

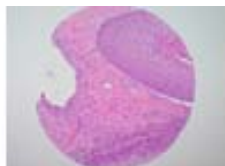
QC sheet_LOT#122120310121
Hematoxylin and Eosin staining



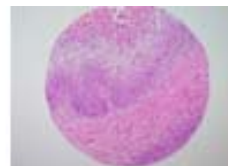
G1



G2



G3



G4



G5



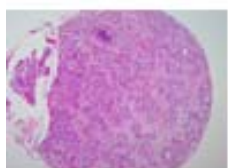
G6



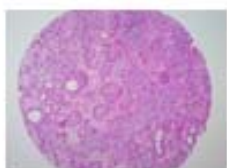
G7



G8



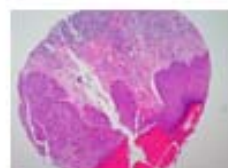
G9



G10



G11



G12



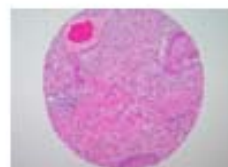
H1



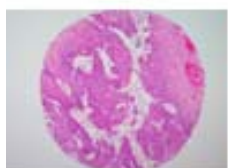
H2



H3



H4



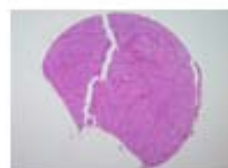
H5



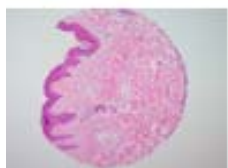
H6



H7



H8



H9



H10

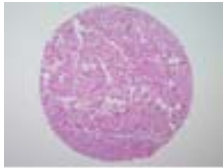


H11

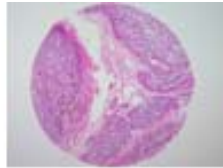


H12

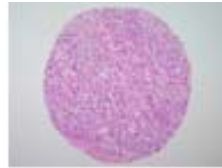
QC sheet_LOT#122120310121
Hematoxylin and Eosin staining



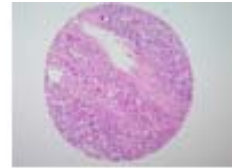
I1



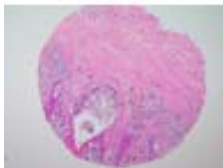
I2



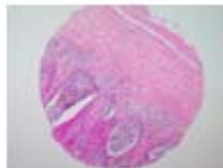
I3



I4



I5



I6



I7



I8

A216: Skin cancer tissues

No.	Coordinate		Sex	Age	Key Word	Histological Diagnosis	Tumor size (cm)	TNM Stage	Treatment
1	A	1,2	m	87	basal cell carcinoma	Skin, face, excision biopsy: 1) basal cell carcinoma extending deep to subcutaneous fat tissue and facial skeletal muscle 2) resection margin, superiol and lateral, free of tumor 3) resection margins, medial, inferiol, lateral and basal,extention of	3.5 x 3.0	T4N0M0 (III)	
2	A	3,4	m	43	basal cell carcinoma	Skin, excision, frozen biopsy: 1) basal cell carcinoma 2) resection margins, superior, inferior, lateral, base: free of tumor	1.0 x 0.8	T1N0M0 (I)	Wide excision
3	A	5,6	f	72	basal cell carcinoma	Skin, nasal dorsum, excision: 1) basal cell carcinoma 2) resection margins, superior, right and base: free of tumor 3) resection margins, inferior and left:Extension of carcinoma	1.7 x 1.5	T1N0M0 (I)	
4	A	7,8	m	83	basal cell carcinoma	Skin, left cheek, excision: 1) basal cell carcinoma 2) resection margins, all circumference and base: free of tumor	2.0 x 2.0	T1N0M0 (I)	Wide excision
5	A	9,10	m	45	basal cell carcinoma	Skin, scalp, occiput, excision: 1) basal cell carcinoma 2) resection margins, all circumference and base:free of tumor	1.6 x 1.3	T1N0M0 (I)	Wide excision
6	A	11,12	m	51	basal cell carcinoma	Skin, face, frozen excision: 1) basal cell carcinoma 2) resection margins, upper, lower and base: free of tumor 3) resection margin, lateral: extension of carcinoma	1.3 x 1.0	T1N0M0 (I)	Wide excision
7	B	1,2	m	59	basal cell carcinoma	Skin, infraorbital area, frozen excision: 1) basal cell carcinoma 2) resection margins, all circumference and base: free of tumor	1.0	T1N0M0 (I)	Wide excision
8	B	3,4	f	76	basal cell carcinoma	Skin, clinically from face, frozen biopsy: 1) basal cell carcinoma i) intact inferior resection margin (safety resection margin:less than 0.1 mm) ii) intact superior resection margin	1.4 x 1.4	T1N0M0 (I)	Wide excision

A216: Skin cancer tissues

No.	Coordinate		Sex	Age	Key Word	Histological Diagnosis	Tumor size (cm)	TNM Stage	Treatment
9	B	5,6	m	81	basal cell carcinoma	Skin and subcutis, anterior chest, excision: 1) basal cell carcinoma, surgical resection margins are free of neoplasm	1.5 x 1.2	T1N0M0 (I)	
10	B	7,8	m	70	basal cell carcinoma	Skin, nasal alar, left, wide excision: 1) basal cell carcinoma 2) resection margins, lateral: free of tumor 3) resection margins, basa : free of tumor	1.5 x 1.5	T1N0M0 (I)	Wide excision
11	B	9,10	m	76	basal cell carcinoma	Skin, left medial cauthus, wide excision: 1) basal cell carcinoma 2) resection margin, base: Involvement of tumor 3) resection margins, lateral, medial, upper and lower: free of tumor	0.5	T1N0M0 (I)	Wide excision
12	B	11,12	m	69	basal cell carcinoma seborrhic keratosis	1.Skin, nose, right, excision: 1) basal cell carcinoma 2) resection margins, upper and medial: extension of basal cell carcinoma 3) resection margins, lower, lateral and base: free of tumor 2.Skin, preauricular, excision: seborrhic keratosis 3.Cartilage, excision: free of tumor	2.3 x 2.0	T2N0M0 (II)	Wide excision
13	C	1,2	m	66	basal cell carcinoma	Skin, foot, excision: 1) No.1: basal cell carcinoma resection margins, all circumference and base: free of tumor 2) No.2: suggestive of chronic eczematous dermatitis without evidence of tumor	2.5 x 2.0	T2N0M0 (II)	Wide excision

A216: Skin cancer tissues

No.	Coordinate		Sex	Age	Key Word	Histological Diagnosis	Tumor size (cm)	TNM Stage	Treatment
14	C	3,4	m	62	basal cell carcinoma	1.Skin, forehead, excision: basal cell carcinoma diffusely involving underlying resection margin 2.Soft tissue, medial canthal area, biopsy: invasion of basal cell carcinoma 3.Lymph node, preauricular, right (0/1): free of tumor	2.5 x 2.0	T2N0M0 (II)	Wide excision
15	C	5,6	f	74	basal cell carcinoma	Skin, leg, left, excision: 1) basal cell carcinoma, confined to the upper dermis 2) resection margins, proximal, distal, medial and lateral: free of tumor	1.7 x 1.3	T1N0M0 (I)	
16	C	7,8	f	82	basal cell carcinoma	Skin, leg, left, excision: 1) basal cell carcinoma 2) resection margin: free of tumor	2.5 x 1.6	T1N0M0 (I)	
17	C	9,10	m	49	basal cell carcinoma	Skin, site not specified, excision: 1) basal cell carcinoma 2) surgical resection margins are free of neoplastic involvement	1.5 x 1.0	T1N0M0 (I)	Wide excision
18	C	11,12	m	41	basal cell carcinoma	Skin, face, excision: 1) glabella, left: basal cell carcinoma, completely excised 2) forehead: free of tumor 3) nose: intradermal nevus	1.5 x 1.5	T1N0M0 (I)	Wide excision
19	D	1,2	m	45	basal cell carcinoma	Skin, nasolabial fold, excision: 1) basal cell carcinoma 2) resection margin : free of tumor	1.8 x 1.3 x 1.0	T1N0M0 (I)	
20	D	3,4	m	49	basal cell carcinoma	Skin, nasolabial fold, right, excision: 1) basal cell carcinoma, incompletely excised	1.5 x 1.2	T1N0M0 (I)	
21	D	5,6	f	75	basal cell carcinoma	Skin, scalp, mass excision: 1) basal cell carcinoma 2) resection margin: free of tumor	0.8 x 0.5	T1N0M0 (I)	

A216: Skin cancer tissues

No.	Coordinate		Sex	Age	Key Word	Histological Diagnosis	Tumor size (cm)	TNM Stage	Treatment
22	D	7,8	m	73	basal cell carcinoma	Skin, nose, excision: 1) basal cell carcinoma 2) resection margins: free of tumor	0.6 x 0.5	T1N0M0 (I)	
23	D	9,10	m	46	basal cell carcinoma	Skin, medial canthus, right, excision: 1) basal cell carcinoma 2) resection margin: focal extension of carcinoma	1.2 x 1.0	T1N0M0 (I)	
24	D	11,12	m	72	basal cell carcinoma	Skin, left lower eyelid, excision: 1) basal cell carcinoma 2) resection margin: free of tumor	0.7 x 0.7	T1N0M0 (I)	
25	E	1,2	m	88	basal cell carcinoma	Skin, nose, frozen biopsy: 1) basal cell carcinoma 2) resection margin, upper: free of tumor 3) resection margin, deep: deep margin is closely approached by neoplasm within 0.1 mm range	1.0	T1N0M0 (I)	Wide excision
26	E	3,4	f	78	squamous cell carcinoma	Skin and soft tissue, axilla, left, excision: squamous cell carcinoma, primary or metastatic	4.5 x 3.5	T NxM1 (IV)	Radio therapy

A216: Skin cancer tissues

No.	Coordinate		Sex	Age	Key Word	Histological Diagnosis	Tumor size (cm)	TNM Stage	Treatment
27	E	5,6	m	75	squamous cell carcinoma	1.Skin and parotid gland, wide excision and superficial parotidectomy: 1) squamous cell carcinoma, moderately differentiated, with extension to parotid gland 2) presence of perineural invasion 3) occasional lymphovascular permeation 4) regional lymph nodes: free of tumor in all 4 lymph nodes (0/4)	2.0 x 1.8	T4N0M0 (III)	Wide excision
28	E	7,8	m	66	squamous cell carcinoma	Skin, right leg, wide excision: Squamous cell carcinoma, well differentiated with 1) size : 3.5x2.5 cm 2) expanding growth 3) approaching to junction of dermo-subcutaneous fat tissue (depth of tumor: 8 mm) 4) intact deep resection margin (safety margin: 4 mm)	3.5 x 2.5 x 0.8	T2N0M0 (II)	
29	E	9,10	m	53	squamous cell carcinoma	Skin and soft tissue, leg, right, excision: 1) squamous cell carcinoma, well differentiated, extending to subcutaneous fat tissue 2) resection margin, base : free of tumor 3) resection margins, upper, lower and medial, separately submitted: free of tumor 4) resection margin, lateral, separately submitted: focal extension of squamous cell carcinoma	5.0 x 3.0	T2N0M0 (II)	Wide excision
30	E	11,12	m	74	squamous cell carcinoma	Skin, buttock, left, wide excision: 1) Invasive squamous cell carcinoma, moderately differentiated 2) resection margins, lateral and base : free of tumor	4.0 x 3.0 x 1.0	T2N0M0 (II)	Wide excision

A216: Skin cancer tissues

No.	Coordinate	Sex	Age	Key Word	Histological Diagnosis	Tumor size (cm)	TNM Stage	Treatment
31	F 1,2	m	48	squamous cell carcinoma warty carcinoma Bowen's disease lipogranuloma CIS paraffinoma	Skin and underlying tissue, perigenital area, excision: 1) condylomatous squamous cell carcinoma (warty carcinoma), invasive, with diffuse carcinoma in situ (Bowen's disease) 2) lipogranuloma, probably due to hypodermic injection of foreign substances such as paraffin, silicon, or wax 3) resection margins, superior, inferior, medial, lateral and basal	3.5 x 3.0 x 1.7	T2N0M0 (II)	Wide excision
32	F 3,4	m	78	squamous cell carcinoma	Skin cheek, right, wide excision: 1) squamous cell carcinoma, well differentiated (size:2.5x1.5 cm) 2) resection margins, cephalic, caudal, medial, lateral and deep: free of tumor 3) solar elastosis and foreign body reaction to suture material	2.5 x 1.5	T2N0M0 (II)	Wide excision
33	F 5,6	m	53	squamous cell carcinoma	Skin, right foot dorsum, wide excision: 1) squamous cell carcinoma, well differentiated, arising from Majolin's ulcer 2) resection margin, base:Involvement of squamous cell carcinoma 3) resection margins, proximal, distal, lateral and medial : free of tumor	8.0 x 7.5	T3N0M0 (II)	Wide excision
34	F 7,8	m	72	squamous cell carcinoma	Skin, temporoparietal area, left, wide excision: well differentiated squamous cell carcinomasurgical margins are free of neoplastic change	5.5 x 5.5	T3N0M0 (II)	Wide excision

A216: Skin cancer tissues

No.	Coordinate		Sex	Age	Key Word	Histological Diagnosis	Tumor size (cm)	TNM Stage	Treatment
35	F	9,10	f	63	metastatic carcinoma squamous cell carcinoma	Skin and soft tissue, right inguinal node, biopsy: diffuse infiltration of carcinoma with squamous differentiation, probably metastatic	5.0 x 3.8 x 1.8	T2N1M1 (IV)	
36	F	11,12	f	85	squamous cell carcinoma	Skin, left cheek, excision: 1) squamous cell carcinoma arising in actinic keratosis with focal superficial invasion 2) resection margin : free of tumor	0.7	T1N0M0 (I)	
37	G	1,2	f	48	squamous cell carcinoma	Skin, vulva, vulvectomy: 1) squamous cell carcinoma in situ 2) resection margins, all circumference and base : free of tumor		TisN0M0 (0)	
38	G	3,4	m	78	squamous cell carcinoma	Skin, inguinal, multiple biopsy: invasive squamous cell carcinoma, well differentiated	1.8 x 1.7 x 1.5	T1N0M0 (I)	
39	G	5,6	m	74	squamous cell carcinoma	Skin with subcutaneous tissue, face, biopsy: squamous cell carcinoma, completely excised (safety margin : 2 mm apart from deep resection margin)	2.2 x 1.2	T1N0M0 (I)	
40	G	7,8	m	29	squamous cell carcinoma	Skin, occiput, biopsy: squamous cell carcinoma, well differentiated with involvement basal margin	6.0 x 6.0 x 3.0	T3N0M0 (II)	Wide excision
41	G	9,10	f	74	squamous cell carcinoma	Skin, mandible, left, excision: squamous cell carcinoma, with intact resection margins	0.7 x 0.2	T1N0M0 (I)	

A216: Skin cancer tissues

No.	Coordinate		Sex	Age	Key Word	Histological Diagnosis	Tumor size (cm)	TNM Stage	Treatment
42	G	11,12	f	71	squamous cell carcinoma	Skin, cheek, right, excision: 1) squamous cell carcinoma in situ associated with actinic keratosis and focal invasion into the superficial dermis 2) resection margin, lateral : focal extension of carcinoma in situ	0.7	T1N0M0 (I)	
43	H	1,2	m	44	squamous cell carcinoma	Skin, chest, excision: 1) Squamous cell carcinoma, metastatic with i) size: 1.5 cm in the greatest diameter ii) involvement at resection margin	1.5	T4N2bM 1 (IV)	
44	H	3,4	f	66	squamous cell carcinoma	Skin, hand, right, excision: squamous cell carcinoma, well differentiated, with clean surgical margins	1.8 x 0.8	T1N0M0 (I)	
45	H	5,6	m	67	squamous cell carcinoma	Skin, right preauricular area, excision: 1) squamous cell carcinoma, invasive, well differentiated 2) resection margin : free of tumor	2.0 x 1.6 x 1.6	T1N0M0 (I)	Wide excision
46	H	7,8	m	72	malignant melanoma	Skin, back, excision: 1) malignant melanoma, nodular type, with extension to the reticular dermis (clark level IV) and depth of invasion 12 mm 2) resection margins, free of tumor	50 x 50 x12 (mm)	T4aN2b M0 (III)	
47	H	9	m	45		Non-neoplastic, from A 9,10			
48	H	10	m	70		Non-neoplastic, from B 7,8			
49	H	11	m	45		Non-neoplastic, from D 1,2			
50	H	12	f	75		Non-neoplastic, from D 5,6			

A216: Skin cancer tissues

No.	Coordinate		Sex	Age	Key Word	Histological Diagnosis	Tumor size (cm)	TNM Stage	Treatment
51	I	1,2	f	49	malignant melanoma	Skin, left foot, excision: Malignant melanoma, nodular, with 1) maximal tumor thickness : 11 mm 2) Clark level V (involvement of subcutaneous fat tissue) 3) with features of regression at the adjacent skin	55 x 25 x11 (mm)	T4aN3M 1 (IV)	
52	I	3,4	m	79	malignant melanoma	Skin, hand, thumb: 1) malignant melanoma, nodular type (clark level V or high risk according to bagley) with extention to the bone 2) resection margin, skin, free of tumor 3) resection margin, bone, free of tumor 4) resection margin, soft tissue and muscle, free of tumor 5) lymph nodes, supraclavicular (1/9), axilla (2/2), arm (2/2): metastatic melanoma to 5 out of 13 lymph nodes	50 x 40 x 30 (mm)	T4aN3M 1a (IV)	Wide excision immunotherapy after operation
53	I	5,6	m	56	malignant melanoma	Skin, left heel, excision: 1) malignant melanoma, superficial spreading type, radial growth phase 2) resection margin: free of tumor	1.2 x 7 (mm)	N1M1 (IV)	
54	I	7,8	m	51	malignant melanoma	Skin, excision, frozen biopsy: malignant melanoma, maximal tumor thickness: 5.5 mm with clean surgical margins and marked lymphoplasmacytic infiltration	20 x 15 x 5.5 (mm)	T4aN2b M1 (IV)	