

(formalin fixed)

For research use only

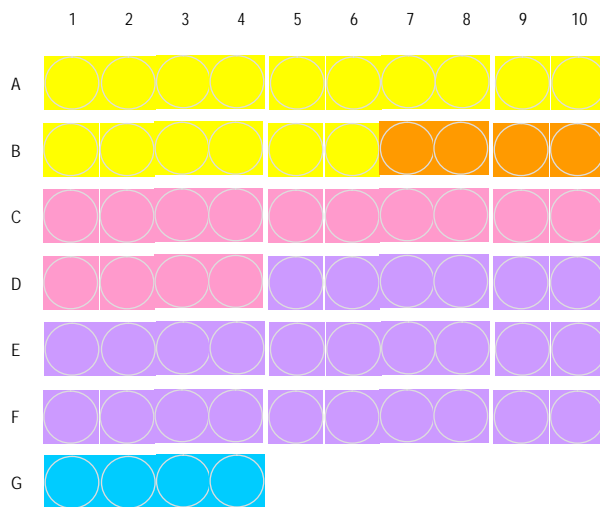
Specifications:

- No. of cases: 30
- Tissue type: Brain cancer tissues
- No. of spots: 2 spots from each cancer case (60 spots)
4 non-neoplastic spots (4 spots)
- Total spots: 64
- Corresponding normal tissues with cancers: Yes
- Diameter: 1.5 mm

Documents:

- Product specification: layout, summary of tissue spots
- H&E stained images
- Detailed pathological information

Layout:



WHO and St.Anne/Mato grading system

WHO grade	WHO designation	St.Anne/Mayo designation
Yellow	I Pilocytic astrocytoma	
Orange	II Diffuse astrocytoma	Astrocytoma grade 2
Pink	III Anaplastic astrocytoma	Astrocytoma grade 3
Purple	IV Glioblastoma multiforme	Astrocytoma grade 4
Cyan	non malignant	

(formalin fixed)

For research use only

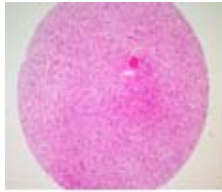
Summary of tissue spots

No	Coordinate	Sex	Age	Key word	
1	A	1,2	m	23	pilocytic astrocytoma
2	A	3,4	f	5	pilocytic astrocytoma
3	A	5,6	m	12	pilocytic astrocytoma
4	A	7,8	m	9	pilocytic astrocytoma
5	A	9,10	f	6	pilocytic astrocytoma
6	B	1,2	f	36	pilocytic astrocytoma
7	B	3,4	f	25	pilocytic astrocytoma
8	B	5,6	f	5	pilocytic astrocytoma
9	B	7,8	f	27	astrocytoma
10	B	9,10	m	31	astrocytoma
11	C	1,2	f	42	anaplastic astrocytoma
12	C	3,4	f	59	anaplastic astrocytoma
13	C	5,6	f	11	anaplastic astrocytoma
14	C	7,8	m	44	anaplastic astrocytoma
15	C	9,10	f	29	astrocytoma
16	D	1,2	f	37	anaplastic astrocytoma
17	D	3,4	f	41	anaplastic astrocytoma
18	D	5,6	f	29	glioblastoma multiforme
19	D	7,8	f	32	glioblastoma
20	D	9,10	f	51	glioblastoma
21	E	1,2	m	17	glioblastoma multiforme
22	E	3,4	m	49	glioblastoma multiforme
23	E	5,6	f	55	glioblastoma
24	E	7,8	m	56	glioblastoma multiforme
25	E	9,10	f	55	glioblastoma multiforme
26	F	1,2	m	44	glioblastoma
27	F	3,4	f	36	glioblastoma multiforme
28	F	5,6	f	1	glioblastoma
29	F	7,8	m	45	glioblastoma multiforme
30	F	9,10	f	56	glioblastoma
31	G	1	f	6	non-neoplastic
32	G	2	m	31	non-neoplastic
33	G	3	m	44	non-neoplastic
34	G	4	m	17	non-neoplastic

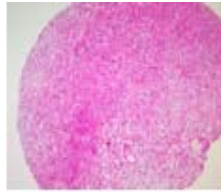
(formalin fixed)

For research use only

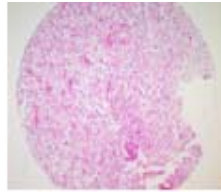
QC sheet_LOT#122120410081
Hematoxylin and Eosin staining



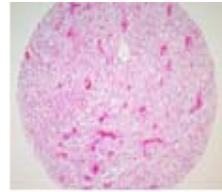
A1



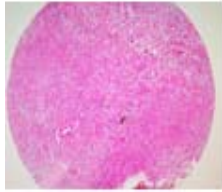
A2



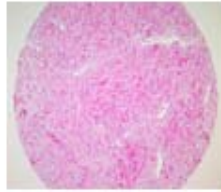
A3



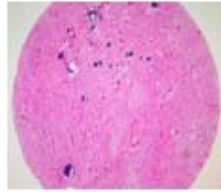
A4



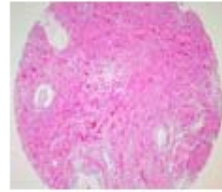
A5



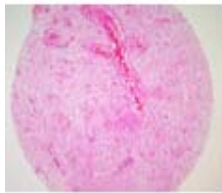
A6



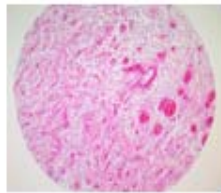
A7



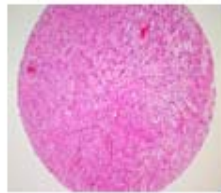
A8



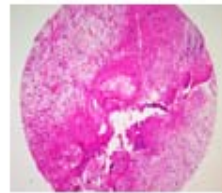
A9



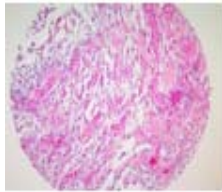
A10



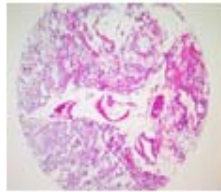
B1



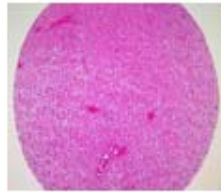
B2



B3



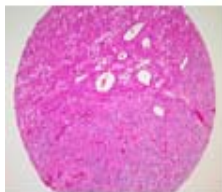
B4



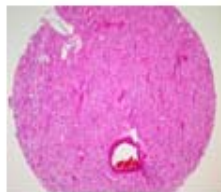
B5



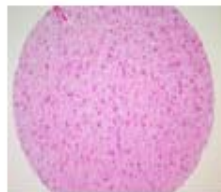
B6



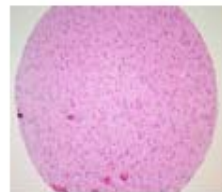
B7



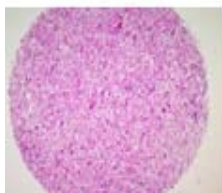
B8



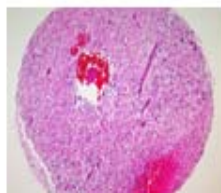
B9



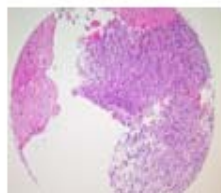
B10



C1



C2



C3

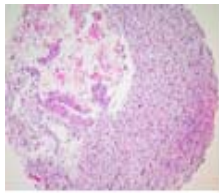


C4

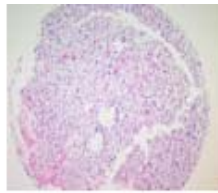
(formalin fixed)

For research use only

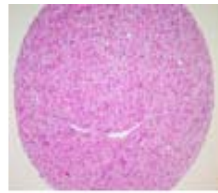
**QC sheet_LOT#122120410081
Hematoxylin and Eosin staining**



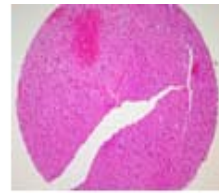
C5



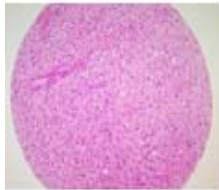
C6



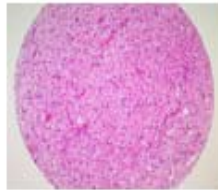
C7



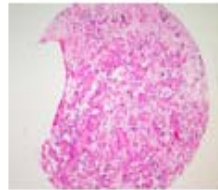
C8



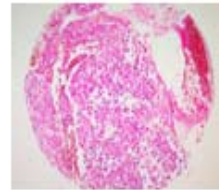
C9



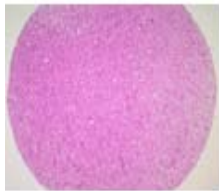
C10



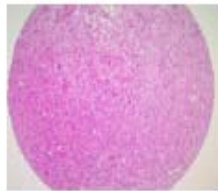
D1



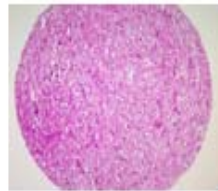
D2



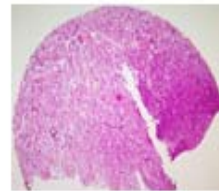
D3



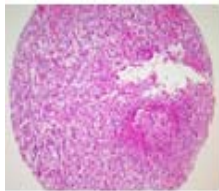
D4



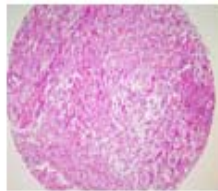
D5



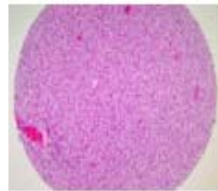
D6



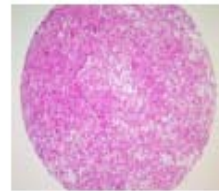
D7



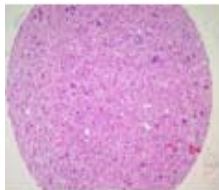
D8



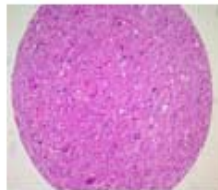
D9



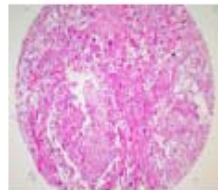
D10



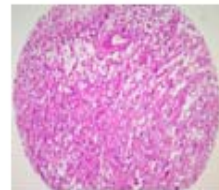
E1



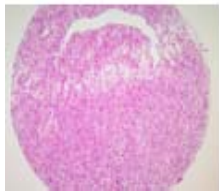
E2



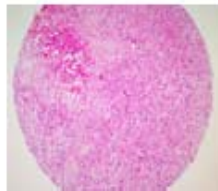
E3



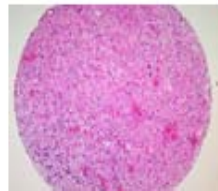
E4



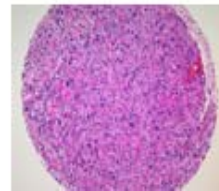
E5



E6



E7



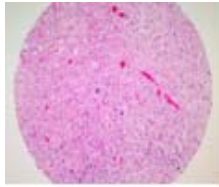
E8

A221(II)- Brain cancer tissues

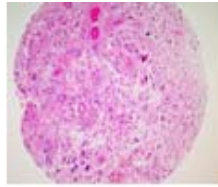
(formalin fixed)

For research use only

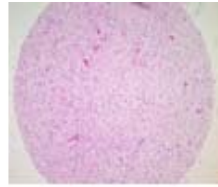
QC sheet_LOT#122120410081
Hematoxylin and Eosin staining



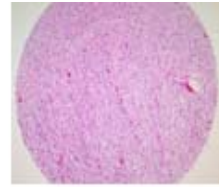
E9



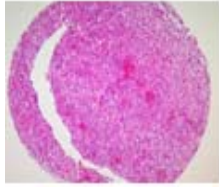
E10



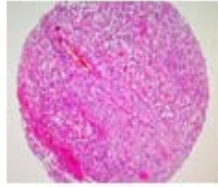
F1



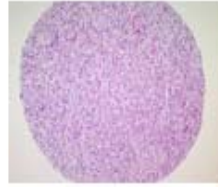
F2



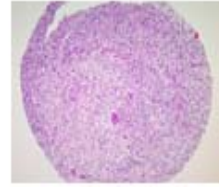
F3



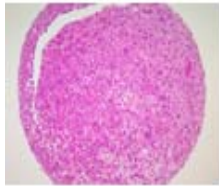
F4



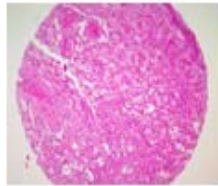
F5



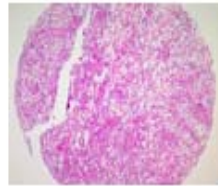
F6



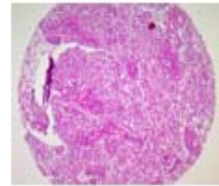
F7



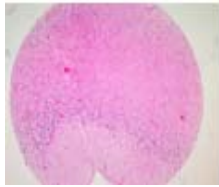
F8



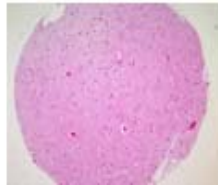
F9



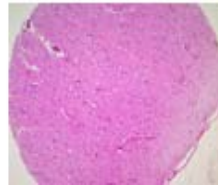
F10



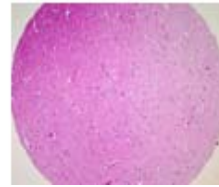
G1



G2



G3



G4

A221(II) Brain cancer tissues- grade I~IV

No	Coordinate		Sex	Age	Key word	Histological Diagnosis
1	A	1,2	m	23	brain: pilocytic astrocytoma	Brain, right, cerebellopontine angle, removal: 1) pilocytic astrocytoma. 2) results of immunohistochemical stains: GFAP(+), MIB-1(focal + (low %)).
2	A	3,4	f	5	cerebellum: pilocytic astrocytoma	Cerebellum, removal: 1) pilocytic astrocytoma. 2) results of immunohistochemical stains: GFAP(+), EMA (-), MIB-1(focal + (low %)).
3	A	5,6	m	12	brain: pilocytic astrocytoma	Brain mass, posterior fossa, removal: pilocytic astrocytoma.
4	A	7,8	m	9	cerebellum: pilocytic astrocytoma	Cerebellar mass, removal: pilocytic astrocytoma, WHO grade I.
5	A	9,10	f	6	cerebellum: pilocytic astrocytoma	Cerebellar mass, removal: pilocytic astrocytoma, WHO grade I.
6	B	1,2	f	36	brain: pilocytic astrocytoma	Brain, periventricular, removal: pilocytic astrocytoma.
7	B	3,4	f	25	cerebrum: pilocytic astrocytoma	Cerebrum, suprasellar area, tumor removal(frozen section): pilocytic astrocytoma.
8	B	5,6	f	5	cerebellum: pilocytic astrocytoma	Cerebellum, removal of tumor: pilocytic astrocytoma.
9	B	7,8	f	27	brain: astrocytoma	Mural nodule: mixed glioma with ependymorantous and astrocytomatous component, gradell. Cyst wall: predominant component of astrocytoma with pilocytic feature (abundant rosenthal
10	B	9,10	m	31	brain: astrocytoma	Brain, frontotemporal, removal: diffuse infiltrative low grade astrocytoma (WHO grade II).
11	C	1,2	f	42	brain: anaplastic astrocytoma	Brain, tumor removal: anaplastic astrocytoma(bordering glioblastoma multiforme).
12	C	3,4	f	59	brain: anaplastic astrocytoma	Brain, left temporal, GTR: anaplastic astrocytoma.
13	C	5,6	f	11	brain: anaplastic astrocytoma	Brain, biopsy: anaplastic astrocytoma.
14	C	7,8	m	44	cerebrum: anaplastic astrocytoma	Cerebrum, site not specified, subtotal removal of tumor: anaplastic astrocytoma (with primary white matter involvement in a case of glioblastoma).
15	C	9,10	f	29	brain: astrocytoma	Brain, temporal, removal: diffuse infiltrative fibrillary astrocytoma, WHO grade III (anaplastic astrocytoma).
16	D	1,2	f	37	brain: anaplastic astrocytoma	Brain, left frontal, removal of tumor: anaplastic gemistocytic astrocytoma, WHO grade III.
17	D	3,4	f	41	brain: anaplastic astrocytoma	Brain, tumor removal: anaplastic astrocytoma (WHO grade III). Note: Neoplastic cells shows moderately pleomorphic nuclei and mitosis. No necrosis and vascular endothelial proliferation is seen.
18	D	5,6	f	29	brain: glioblastoma multiforme	Brain tumor, main mass: glioblastoma multiforme (with no obvious necrotic foci).
19	D	7,8	f	32	brain: glioblastoma	Brain, Frontal lobe, C/O Tumor removal: malignant mixed glioma, with oligodendroglioma and ganglioglioma, Grade III- IV.
20	D	9,10	f	51	brain: glioblastoma	Brain, left frontal, removal of tumor: glioblastoma.

A221(II) Brain cancer tissues- grade I~IV

No	Coordinate		Sex	Age	Key word	Histological Diagnosis
21	E	1,2	m	17	brain: glioblastoma multiforme	Brain, removal: 1) labelled as hippocampus: glioblastoma multiforme. 2) tissue site not specified: glioblastoma multiforme. Note: The hippocampus shows only microscopic focus of neoplastic cells on the ventricular
22	E	3,4	m	49	brain: glioblastoma multiforme	Brain, removal: 1) glioblastoma multiforme with radionecrosis. 2) labelled as temporal lobe": glioblastoma multiforme with radionecrosis. Note: Approximately 50% of the volume of tissue is made up of glioblastoma, while the remainder represents radionecrosis.
23	E	5,6	f	55	brain: glioblastoma	Brain, left parietooccipital area, removal: astrocytoma grade IV (glioblastoma).
24	E	7,8	m	56	brain: glioblastoma multiforme	Brain mass, left, removal: glioblastoma multiforme.
25	E	9,10	f	55	brain: glioblastoma multiforme	Cerebral mass, right, frontal lobe, removal: glioblastoma multiforme.
26	F	1,2	m	44	brain: glioblastoma	Brain mass, right temporal lobe, removal: glioblastoma.
27	F	3,4	f	36	brain: glioblastoma multiforme	Cerebral mass, right, temporal lobe, removal: glioblastoma multiforme in the background of anaplastic gemistocytic astrocytoma.
28	F	5,6	f	1	brain: glioblastoma	Brain mass, cerebral hemisphere, removal: glioblastoma.
29	F	7,8	m	45	brain: glioblastoma multiforme	Brain, right lateral, tumor removal: glioblastoma multiforme.
30	F	9,10	f	56	brain: glioblastoma	Brain, parietal, tumor removal: 1) gliosarcoma arising in glioblastoma (Feigin tumor). 2) results of immunohistochemical stains: GFAP(+), Vimentin(+), CK low and high(-), EMA(-).
31	G	1	f	6	non-neoplastic	non-neoplastic from A9,10
32	G	2	m	31	non-neoplastic	non-neoplastic from B9,10
33	G	3	m	44	non-neoplastic	non-neoplastic from C7,8
34	G	4	m	17	non-neoplastic	non-neoplastic from E1,2