

(formalin fixed)

For research use only

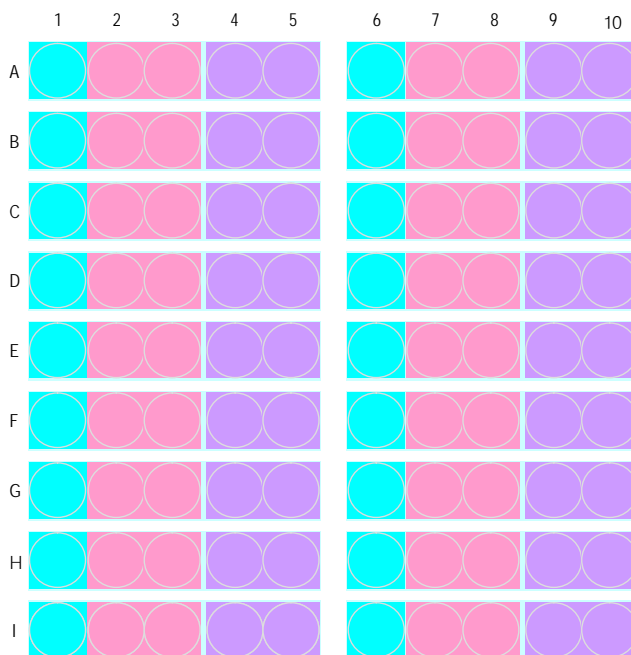
Specifications:

- No. of cases: 18
- Tissue type: Colon cancer tissues_liver metastasis with corresponding colon normal tissues
- No. of spots: 4 spots from each cancer case (72 spots)
18 non-neoplastic spots (18 spots)
- Total spots: 90
- Corresponding normal tissues with cancers: Yes
- Diameter: 1.0 mm

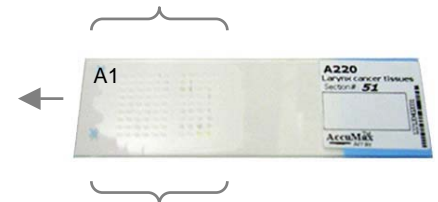
Documents:

- Product specification: layout, summary of tissue spots
- H&E stained images
- Detailed pathological information

Layout:



- : colon, non malignant
- : colon, tumor
- : liver, metastatic tumor
- : one patient case



(formalin fixed)

For research use only

Summary of tissue spots

No.	Coordinate	Sex	Age	Key word
1	1	f	68	non-noeplastic from A2,3
	2,3			colon: adenocarcinoma
	4,5			liver metastasis form A2,3
2	6	m	58	non-noeplastic from A7,8
	7,8			colon: adenocarcinoma
	9,10			liver metastasis form A7,8
3	1	m	64	non-noeplastic from B2,3
	2,3			colon: adenocarcinoma
	4,5			liver metastasis form B2,3
4	6	f	58	non-noeplastic from B7,8
	7,8			colon: adenocarcinoma
	9,10			liver metastasis form B7,8
5	1	m	30	non-noeplastic from C2,3
	2,3			colon: adenocarcinoma
	4,5			liver metastasis form C1
6	6	m	39	non-noeplastic from C7,8
	7,8			colon: adenocarcinoma
	9,10			liver metastasis form C7,8
7	1	m	52	non-noeplastic from D2,3
	2,3			colon: adenocarcinoma
	4,5			liver metastasis form D2,3
8	6	m	43	non-noeplastic from D7,8
	7,8			colon: adenocarcinoma
	9,10			liver metastasis form D7,8
9	1	m	65	non-noeplastic from E2,3
	2,3			colon: adenocarcinoma
	4,5			liver metastasis form E2,3
10	6	m	79	non-noeplastic from E7,8
	7,8			colon: adenocarcinoma
	9,10			liver metastasis form E7,8
11	1	m	55	non-noeplastic from F2,3
	2,3			colon: adenocarcinoma
	4,5			liver metastasis form F2,3
12	6	f	51	non-noeplastic from F7,8
	7,8			colon: adenocarcinoma
	9,10			liver metastasis form F7,8

(formalin fixed)

For research use only

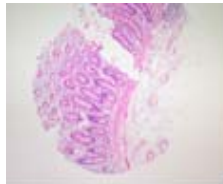
Summary of tissue spots

No.	Coordinate	Sex	Age	Key word
13	1	m	63	non-noeplastic from G2,3
	2,3			colon: adenocarcinoma
	4,5			liver metastasis form G2,3
14	6	m	67	non-noeplastic from G7,8
	7,8			colon: adenocarcinoma
	9,10			liver metastasis form G7,8
15	1	m	47	non-noeplastic from H2,3
	2,3			colon: adenocarcinoma
	4,5			liver metastasis form H2,3
16	6	m	64	non-noeplastic from H7,8
	7,8			colon: adenocarcinoma
	9,10			liver metastasis form H7,8
17	1	m	60	non-noeplastic from I2,3
	2,3			colon: adenocarcinoma
	4,5			liver metastasis form I2,3
18	6	m	49	non-noeplastic from I7,8
	7,8			colon: adenocarcinoma
	9,10			liver metastasis form I7,8

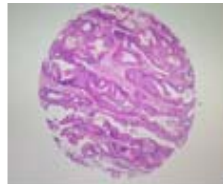
(formalin fixed)

For research use only

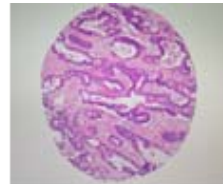
QC sheet_LOT#132150411281
Hematoxylin and Eosin staining



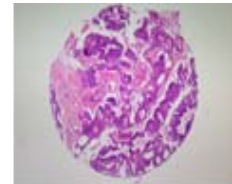
A1



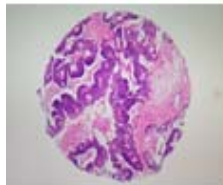
A2



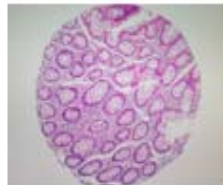
A3



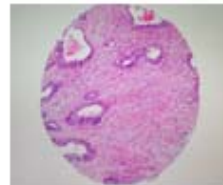
A4



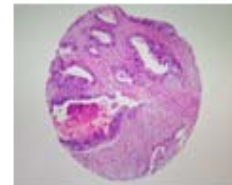
A5



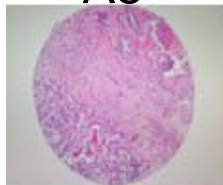
A6



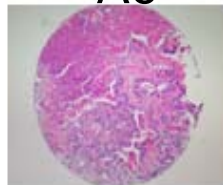
A7



A8



A9



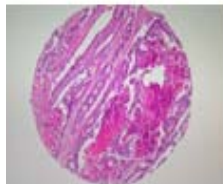
A10



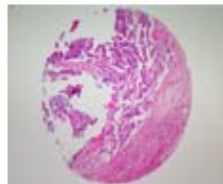
B1



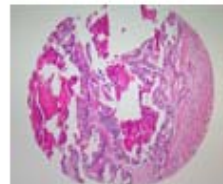
B2



B3



B4



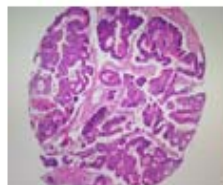
B5



B6



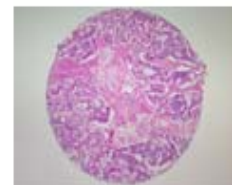
B7



B8



B9



B10



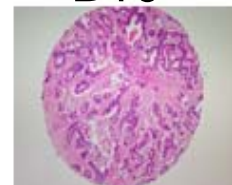
C1



C2



C3

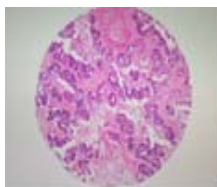


C4

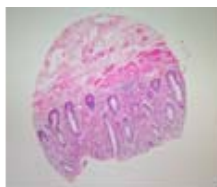
(formalin fixed)

For research use only

QC sheet_LOT#132150411281
Hematoxylin and Eosin staining



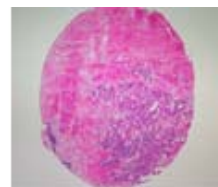
C5



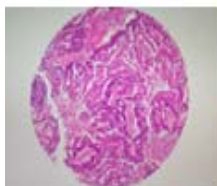
C6



C7



C8



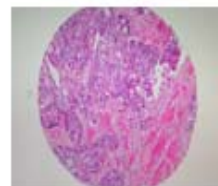
C9



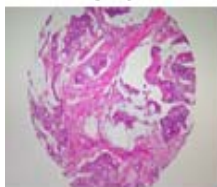
C10



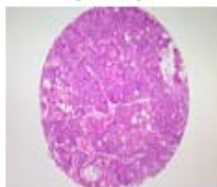
D1



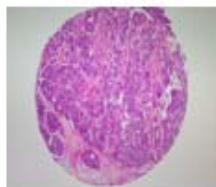
D2



D3



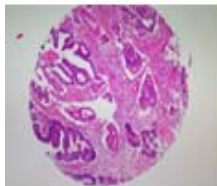
D4



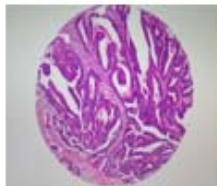
D5



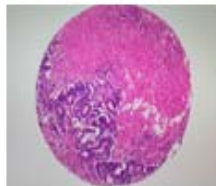
D6



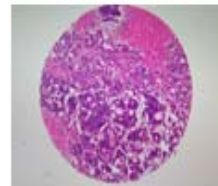
D7



D8



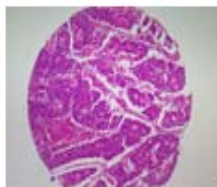
D9



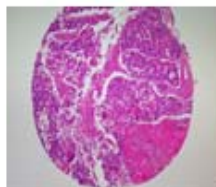
D10



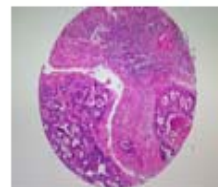
E1



E2



E3



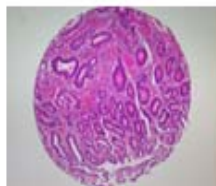
E4



E5



E6



E7



E8

(formalin fixed)

For research use only

QC sheet_LOT#132150411281
Hematoxylin and Eosin staining



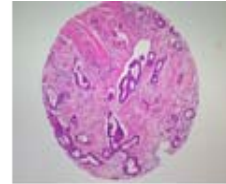
E9



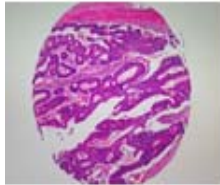
E10



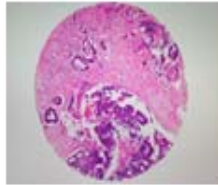
F1



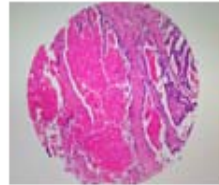
F2



F3



F4



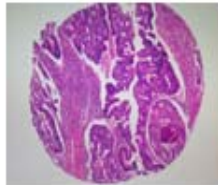
F5



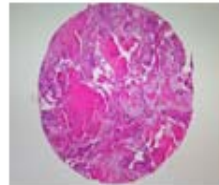
F6



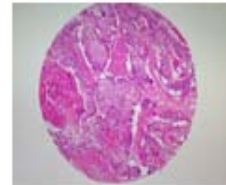
F7



F8



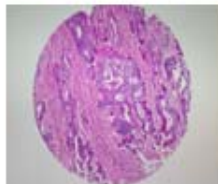
F9



F10



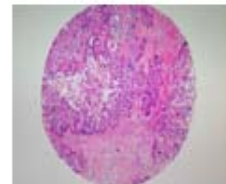
G1



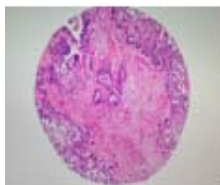
G2



G3



G4



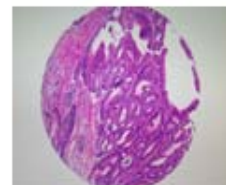
G5



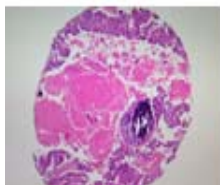
G6



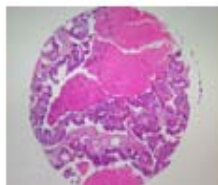
G7



G8



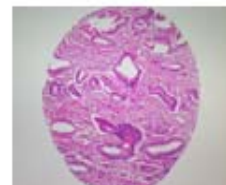
G9



G10



H1

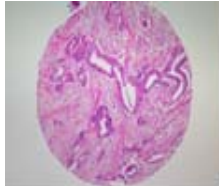


H2

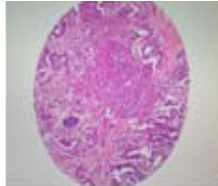
(formalin fixed)

For research use only

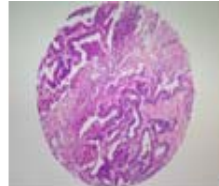
QC sheet_LOT#132150411281
Hematoxylin and Eosin staining



H3



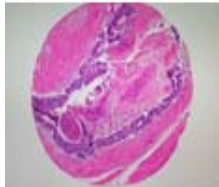
H4



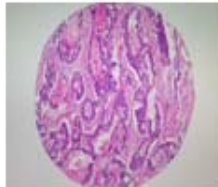
H5



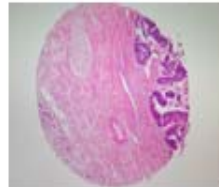
H6



H7



H8



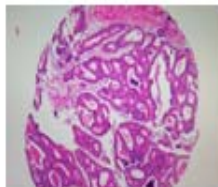
H9



H10



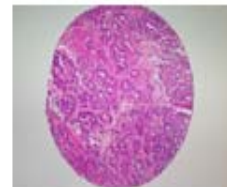
I1



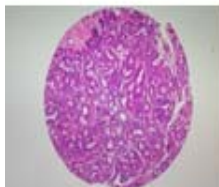
I2



I3



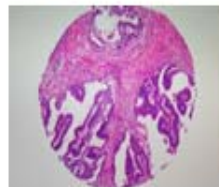
I4



I5



I6



I7



I8



I9



I10

A203(III): Colon cancer tissues _liver metastasis

No.	Coordinate	Sex	Age	Key word	Differentiation	Dukes stage	liver metastasis (cm)	colon operation	Liver operation	Lymph node
1	1	f	68	non-noeplastic from A2,3						
	2,3			colon: adenocarcinoma	moderate	C2		right hemicolectomy		5/33
	4,5			liver metastasis form A2,3			1.5		tum	
2	6	m	58	non-noeplastic from A7,8						
	7,8			colon: adenocarcinoma	moderate	B2		low anterior resection		
	9,10			liver metastasis form A7,8			2		wedge resection	
3	1	m	64	non-noeplastic from B2,3						
	2,3			colon: adenocarcinoma	moderate	C2		anterior resection		4/15
	4,5			liver metastasis form B2,3			1		segmental resection	
4	6	f	58	non-noeplastic from B7,8						
	7,8			colon: adenocarcinoma	moderate	C2		low anterior resection		3/44
	9,10			liver metastasis form B7,8			4		left lobectomy	
5	1	m	30	non-noeplastic from C2,3						
	2,3			colon: adenocarcinoma	moderate	C2		low anterior resection		16/25
	4,5			liver metastasis form C1			3.2/2/0.5/0.3		segmental resectionx3	
6	6	m	39	non-noeplastic from C7,8						
	7,8			colon: adenocarcinoma	moderate	C1		Miles' operation		1/4
	9,10			liver metastasis form C7,8			1.5/0.5		left lobectomy	
7	1	m	52	non-noeplastic from D2,3						
	2,3			colon: adenocarcinoma	moderate	C2		right hemicolectomy		2/18
	4,5			liver metastasis form D2,3			0.7/0.5		left lateral segmentectomy	
8	6	m	43	non-noeplastic from D7,8						
	7,8			colon: adenocarcinoma	moderate	C2		low anterior resection		7/3
	9,10			liver metastasis form D7,8			1.5/0.6		segmental resectionx2	

A203(III): Colon cancer tissues _liver metastasis

No.	Coordinate	Sex	Age	Key word	Differentiation	Dukes stage	liver metastasis (cm)	colon operation	Liver operation	Lymph node
9	E	m	65	1	non-noeplastic from E2,3					
				2,3	colon: adenocarcinoma	moderate	B2		low anterior resection	
				4,5	liver metastasis form E2,3			1		enu
10		m	79	6	non-noeplastic from E7,8					
				7,8	colon: adenocarcinoma	moderate	C2		right hemicolectomy	2/57
				9,10	liver metastasis form E7,8			2.2		segmenta resection
11	F	m	55	1	non-noeplastic from F2,3					
				2,3	colon: adenocarcinoma	moderate	C2		right hemicolectomy	1/51
				4,5	liver metastasis form F2,3			3.5		lobectomy
12		f	51	6	non-noeplastic from F7,8					
				7,8	colon: adenocarcinoma	moderate	C2		low anterior resection	3/30
				9,10	liver metastasis form F7,8			4		trisegmental resection
13	G	m	63	1	non-noeplastic from G2,3					
				2,3	colon: adenocarcinoma	moderate	B2		right hemicolectomy	
				4,5	liver metastasis form G2,3			2		wedge resection
14		m	67	6	non-noeplastic from G7,8					
				7,8	colon: adenocarcinoma	moderate	B2		anterior resection	
				9,10	liver metastasis form G7,8			1		tum
15	H	m	47	1	non-noeplastic from H2,3					
				2,3	colon: adenocarcinoma	well	C2		right hemicolectomy	4/19
				4,5	liver metastasis form H2,3			3		right lobectomy
16		m	64	6	non-noeplastic from H7,8					
				7,8	colon: adenocarcinoma	well	B2		Miles' operation	
				9,10	liver metastasis form H7,8			1.1/0.8		right lobectomy
17	I	m	60	1	non-noeplastic from I2,3					
				2,3	colon: adenocarcinoma	moderate	B2		low anterior resection	
				4,5	liver metastasis form I2,3			1.5		wedge resection
18		m	49	6	non-noeplastic from I7,8					
				7,8	colon: adenocarcinoma	moderate	B2		segmental resection	
				9,10	liver metastasis form I7,8			4.6/6.2		right lobectomy