

(formalin fixed)

For research use only

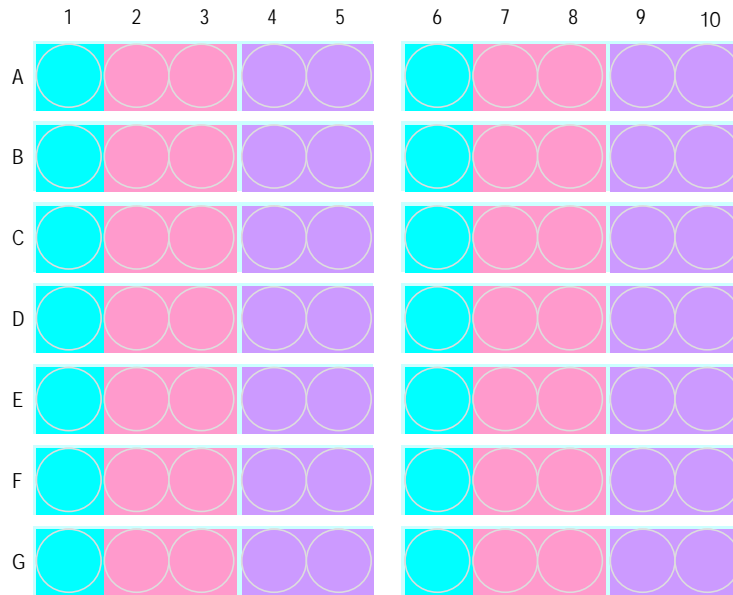
Specifications:

- No. of cases: 14
- Tissue type: Colon cancer tissues_liver metastasis with corresponding normal tissues
- No. of spots: 4 spots from each cancer case (56 spots)
14 non-neoplastic spots (14 spots)
- Total spots: 70
- Corresponding normal tissues with cancers: Yes
- Diameter: 1.5 mm

Documents:

- Product specification: layout, summary of tissue spots
- H&E stained images
- Detailed pathological information

Layout:



● : colon, non malignant
 ● : colon, tumor
 ● : liver, metastatic tumor
 ●●●● : one patient case

(formalin fixed)

For research use only

Summary of tissue spots

No.	Coordinate	Sex	Age	Key word
1	A	f	72	1 non-noeplastic from A2,3
				2,3 colon: adenocarcinoma
				4,5 liver metastasis form A2,3
2	A	f	51	6 non-noeplastic from A7,8
				7,8 colon: adenocarcinoma
				9,10 liver metastasis form A7,8
3	B	f	68	1 non-noeplastic from B2,3
				2,3 colon: adenocarcinoma
				4,5 liver metastasis form B2,3
4	B	f	74	6 non-noeplastic from B7,8
				7,8 colon: adenocarcinoma
				9,10 liver metastasis form B7,8
5	C	m	43	1 non-noeplastic from C2,3
				2,3 colon: adenocarcinoma
				4,5 liver metastasis form C1
6	C	m	65	6 non-noeplastic from C7,8
				7,8 colon: adenocarcinoma
				9,10 liver metastasis form C7,8
7	D	f	61	1 non-noeplastic from D2,3
				2,3 colon: adenocarcinoma
				4,5 liver metastasis form D2,3
8	D	m	48	6 non-noeplastic from D7,8
				7,8 colon: adenocarcinoma
				9,10 liver metastasis form D7,8
9	E	m	66	1 non-noeplastic from E2,3
				2,3 colon: adenocarcinoma
				4,5 liver metastasis form E2,3
10	E	m	63	6 non-noeplastic from E7,8
				7,8 colon: adenocarcinoma
				9,10 liver metastasis form E7,8
11	F	m	72	1 non-noeplastic from F2,3
				2,3 colon: adenocarcinoma
				4,5 liver metastasis form F2,3
12	F	m	42	6 non-noeplastic from F7,8
				7,8 colon: adenocarcinoma
				9,10 liver metastasis form F7,8
13	G	m	46	1 non-noeplastic from G2,3
				2,3 colon: adenocarcinoma
				4,5 liver metastasis form G2,3
14	G	m	54	6 non-noeplastic from G7,8
				7,8 colon: adenocarcinoma
				9,10 liver metastasis form G7,8

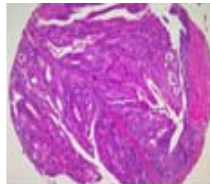
(formalin fixed)

For research use only

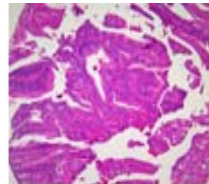
QC sheet_LOT#132150501271
Hematoxylin and Eosin staining



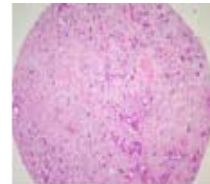
A1



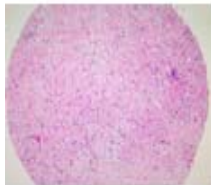
A2



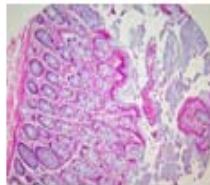
A3



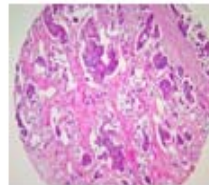
A4



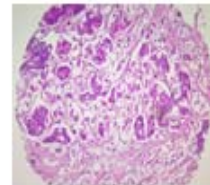
A5



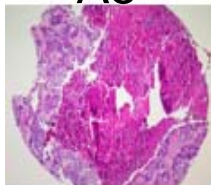
A6



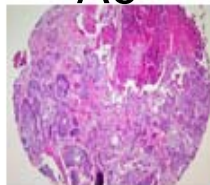
A7



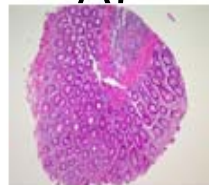
A8



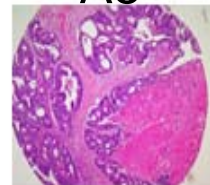
A9



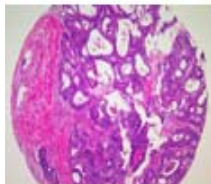
A10



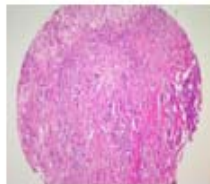
B1



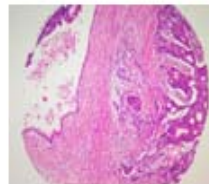
B2



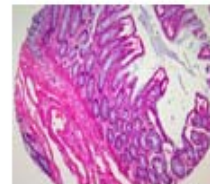
B3



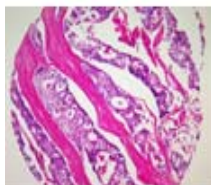
B4



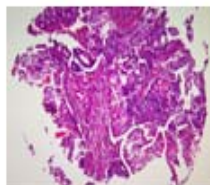
B5



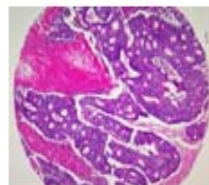
B6



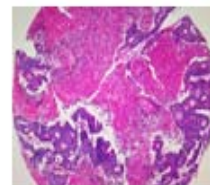
B7



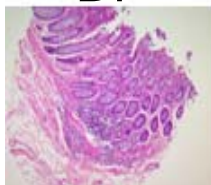
B8



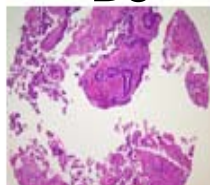
B9



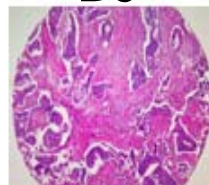
B10



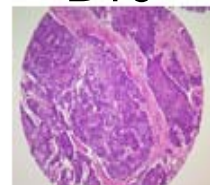
C1



C2



C3

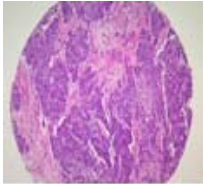


C4

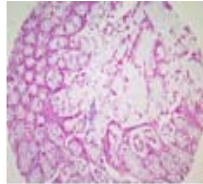
(formalin fixed)

For research use only

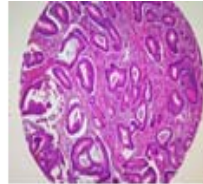
QC sheet_LOT#132150501271
Hematoxylin and Eosin staining



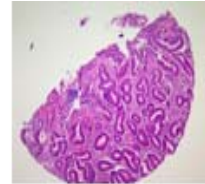
C5



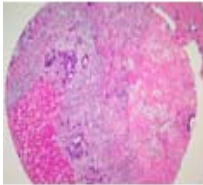
C6



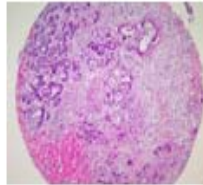
C7



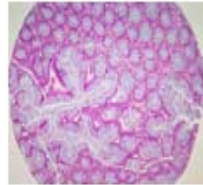
C8



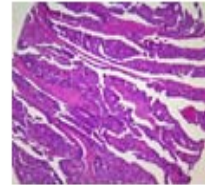
C9



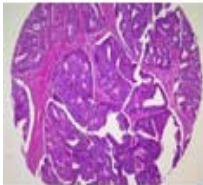
C10



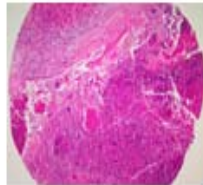
D1



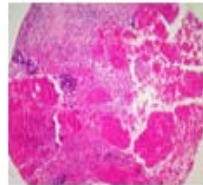
D2



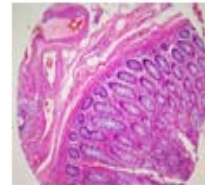
D3



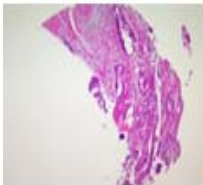
D4



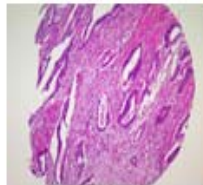
D5



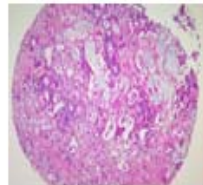
D6



D7



D8



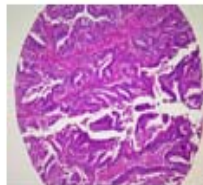
D9



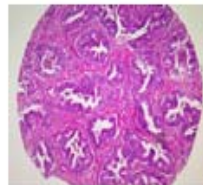
D10



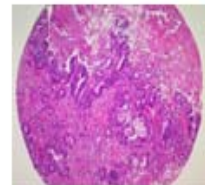
E1



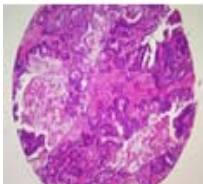
E2



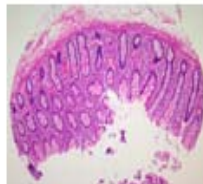
E3



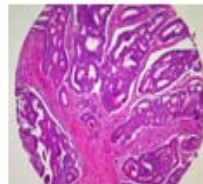
E4



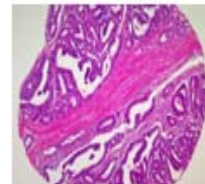
E5



E6



E7

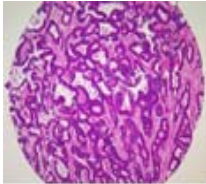


E8

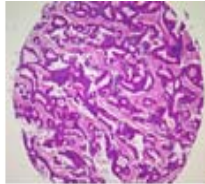
(formalin fixed)

For research use only

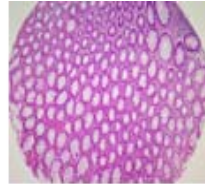
QC sheet_LOT#132150501271
Hematoxylin and Eosin staining



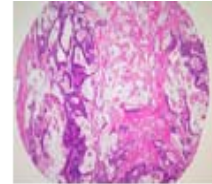
E9



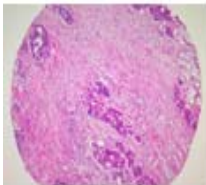
E10



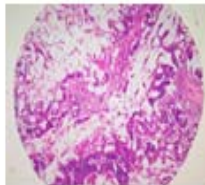
F1



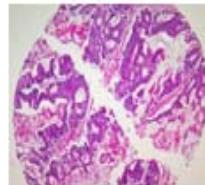
F2



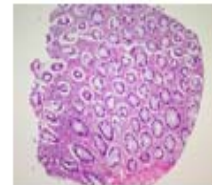
F3



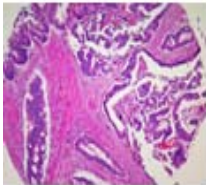
F4



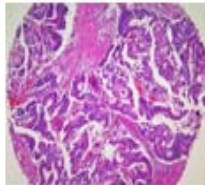
F5



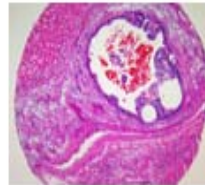
F6



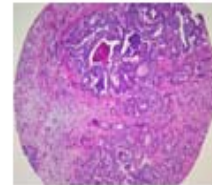
F7



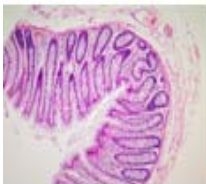
F8



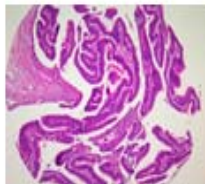
F9



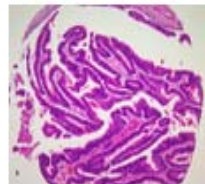
F10



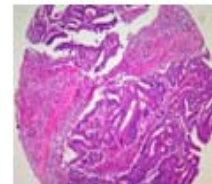
G1



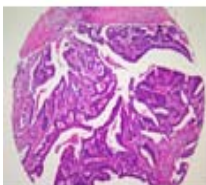
G2



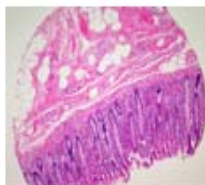
G3



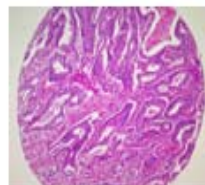
G4



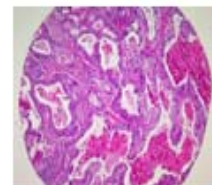
G5



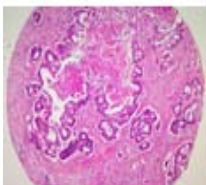
G6



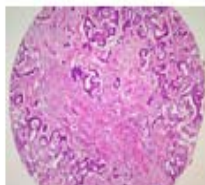
G7



G8



G9



G10

A203(IV): Colon cancer tissues _liver metastasis

No.	Coordinate	Sex	Age	Key word	Differentiation	Dukes stage	liver metastasis (cm)	colon operation	Liver operation	Lymph node
1	1	f	72	non-noeplastic from A2,3						
	2,3			colon: adenocarcinoma	moderate	C2		low anterior resection		1/7
	4,5			liver metastasis form A2,3			2.8		segmentectomy	
2	6	f	51	non-noeplastic from A7,8						
	7,8			colon: adenocarcinoma	moderate	C2		low anterior resection		2/15
	9,10			liver metastasis form A7,8			3.6		segmentectomy	
3	1	f	68	non-noeplastic from B2,3						
	2,3			colon: adenocarcinoma	moderate	C2		right hemicolectomy		4/25
	4,5			liver metastasis form B2,3			4.8/1.2/0.6		left lateral segmentectomy	
4	6	f	74	non-noeplastic from B7,8						
	7,8			colon: adenocarcinoma	moderate	C2		anterior resection		6/26
	9,10			liver metastasis form B7,8			7.5/2.6/0.4		right lobectomy	
5	1	m	43	non-noeplastic from C2,3						
	2,3			colon: adenocarcinoma	moderate	C2		Miles' operation		6/31
	4,5			liver metastasis form C1			1.8		tum	
6	6	m	65	non-noeplastic from C7,8						
	7,8			colon: adenocarcinoma	moderate	C2		left hemicolectomy		1/12
	9,10			liver metastasis form C7,8			1.7/1.1		segmentectomyx2	
7	1	f	61	non-noeplastic from D2,3						
	2,3			colon: adenocarcinoma	moderate	C2		anterior resection		1/12
	4,5			liver metastasis form D2,3			1.5		right lobectomy	
8	6	m	48	non-noeplastic from D7,8						
	7,8			colon: adenocarcinoma	moderate	B2				
	9,10			liver metastasis form D7,8			1.4	low anterior resection	right lobectomy	

No.	Coordinate	Sex	Age	Key word	Differentiation	Dukes stage	liver metastasis (cm)	colon operation	Liver operation	Lymph node
9	1	m	66	non-noeplastic from E2,3						
	2,3			colon: adenocarcinoma	moderate	C2		anterior resection		7/12
	4,5			liver metastasis form E2,3			1.3/1.2		segmentectomy	
10	6	m	63	non-noeplastic from E7,8						
	7,8			colon: adenocarcinoma	moderate	C2		right hemicolectomy		2/21
	9,10			liver metastasis form E7,8			1.7		segmentectomy	
11	1	m	72	non-noeplastic from F2,3						
	2,3			colon: adenocarcinoma	moderate	C2		anterior resection		2/13
	4,5			liver metastasis form F2,3			3/2/1.6		segmentectomy	
12	6	m	42	non-noeplastic from F7,8						
	7,8			colon: adenocarcinoma	moderate	B1		low anterior resection		
	9,10			liver metastasis form F7,8			1		tumor	
13	1	m	46	non-noeplastic from G2,3						
	2,3			colon: adenocarcinoma	moderate	B2		low anterior resection		
	4,5			liver metastasis form G2,3			1.5		left lateral segmentectomy	
14	6	m	54	non-noeplastic from G7,8						
	7,8			colon: adenocarcinoma	moderate	B2		right hemicolectomy		
	9,10			liver metastasis form G7,8			1.9/1.0		tum/ left lateral segmentectomy	