

(formalin fixed)

For research use only

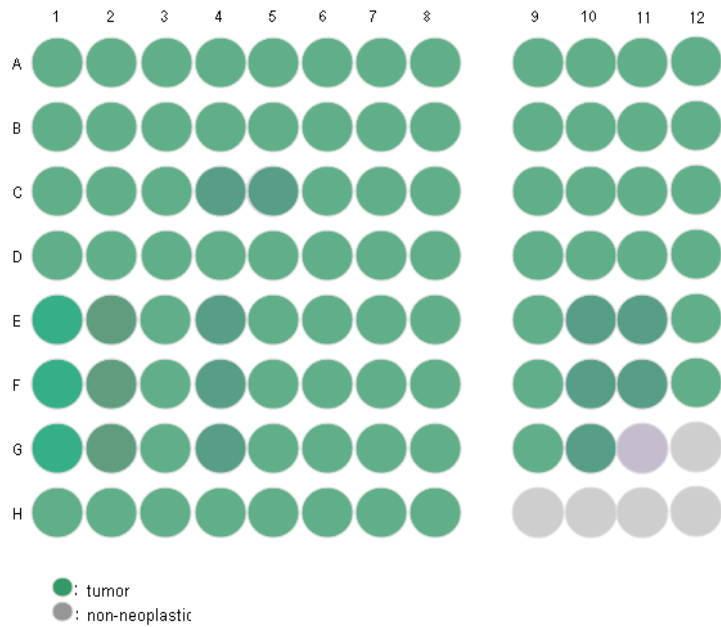
Specifications:

- No. of cases: 45
- Tissue type: Prostate cancer tissues_ stage 2,3
- No. of spots: 2 spots from each cancer case (90 spots)
6 non-neoplastic spots (6 spots)
- Total spots: 96
- Corresponding normal tissues with cancers: Yes
- Diameter: 1.0 mm

Documents:

- Product specification: layout, summary of tissue spots
- H&E stained images
- Detailed pathological information

Layout:



(formalin fixed)

For research use only

Summary of tissue spots

No	Coordinate	Age	Pathology	G	V	Size	L	Z	Stage	
1	A	1,2	59	Adenocarcinoma	6	5	2	l	p	2
2		3,4	62	Adenocarcinoma	6	5	1	b	p	2
3		5,6	52	Adenocarcinoma	6	5	1	b	p	2
4		7,8	78	Adenocarcinoma	7	20	3	b	pt	2
5		9,10	69	Adenocarcinoma	9	20	3	b	pt	2
6		11,12	68	Adenocarcinoma	9	70	4	b	pt	2
7	B	1,2	64	Adenocarcinoma	7	20	4	b	p	2
8		3,4	69	Adenocarcinoma	7	15	1.7	b	pt	2
9		5,6	67	Adenocarcinoma	7	30		b	p	2
10		7,8	67	Adenocarcinoma	7	10	2	l	p	2
11		9,10	60	Adenocarcinoma	9	25	2.4	l	p	2
12		11,12	62	Adenocarcinoma	9	20	2.7	b	p	2
13	C	1,2	62	Adenocarcinoma	7	15	2	b	p	2
14		3,4	68	Adenocarcinoma	7	5	1	b	p	2
15		5,6	58	Adenocarcinoma	7	10	1.3	b	p	2
16		7,8	73	Adenocarcinoma	7	10	2	b	pt	2
17		9,10	57	Adenocarcinoma	9	40	4	b	p	2
18		11,12	53	Adenocarcinoma	9	5	1.3	r	p	2
19	D	1,2	58	Adenocarcinoma	7	5	1.1	b	p	2
20		3,4	60	Adenocarcinoma	7	5	1.1	l	p	2
21		5,6	64	Adenocarcinoma	7	5	1.2	r	p	2
22		7,8	68	Adenocarcinoma	7	10	2	b	p	2
23		9,10	46	Adenocarcinoma	9	30	2.4	b	t	2
24		11,12	66	Adenocarcinoma	9	20	2.5	b	pt	2
25	E	1,2	62	Adenocarcinoma	7	10	1.7	b	p	2
26		3,4	59	Adenocarcinoma	7	10	1.8	b	t	2
27		5,6	63	Adenocarcinoma	7	15	1.8	b	p	2
28		7,8	57	Adenocarcinoma	7	10	1.2	r	tc	2
29		9,10	64	Adenocarcinoma	7	40	2.8	b	pt	3
30		11,12	64	Adenocarcinoma	7	15	2.2	b	pt	3
31	F	1,2	67	Adenocarcinoma	7	10	2.5	r	p	2
32		3,4	61	Adenocarcinoma	7	10	2.2	b	p	2
33		5,6	70	Adenocarcinoma	7	20	2.5	b	p	2
34		7,8	66	Adenocarcinoma	8	10	1.4	b	p	2
35		9,10	66	Adenocarcinoma	9	95	3.8	b	p	3
36		11,12	65	Adenocarcinoma	9	90	6	b	e	3

(formalin fixed)

For research use only

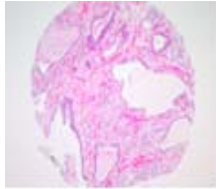
Summary of tissue spots

No	Coordinate	Age	Pathology	G	V	Size	L	Z	Stage	
37	G	1,2	64	Adenocarcinoma	8	15	2.5	b	p	2
38		3,4	70	Adenocarcinoma	8	15	4	b	p	2
39		5,6	56	Adenocarcinoma	8	15	1.8	b	p	2
40		7,8	57	Adenocarcinoma	8	30	4.2	b	p	2
41		9,10	66	Adenocarcinoma	9	80	3.7	b	p	3
42		11	62	Non-neoplastic	non-neoplastic from B11,12					
43		12	60	Non-neoplastic	non-neoplastic from D3,4					
44	H	1,2	68	Adenocarcinoma	8	10	1.4	r	p	2
45		3,4	53	Adenocarcinoma	8	25		r	p	2
46		5,6	71	Adenocarcinoma	9	15	2	b	pc	2
47		7,8	51	Adenocarcinoma	9	20	2.1	b	p	2
48		9	62	Non-neoplastic	non-neoplastic from A3,4					
49		10	67	Non-neoplastic	non-neoplastic from B5,6					
50		11	64	Non-neoplastic	non-neoplastic from G1,2					
51		12	60	Non-neoplastic	non-neoplastic from B9,10					

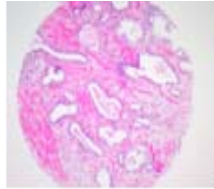
(formalin fixed)

For research use only

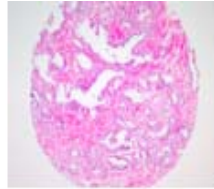
QC sheet_LOT#122120505231
Hematoxylin and Eosin staining



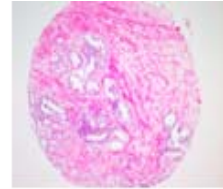
A1



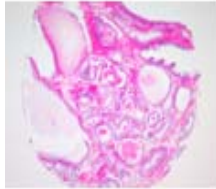
A2



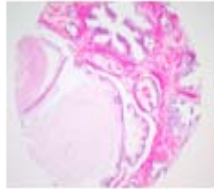
A3



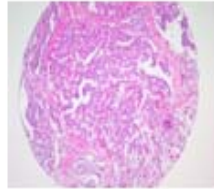
A4



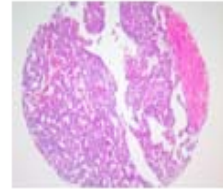
A5



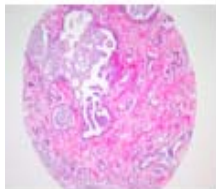
A6



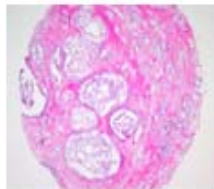
A7



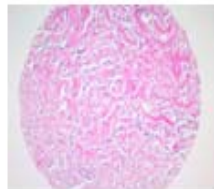
A8



A9



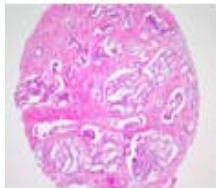
A10



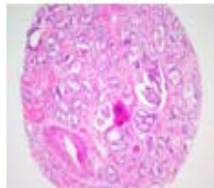
A11



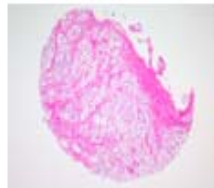
A12



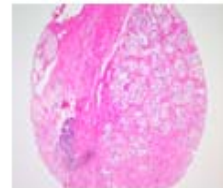
B1



B2



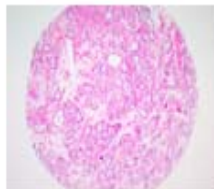
B3



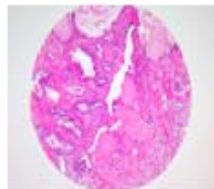
B4



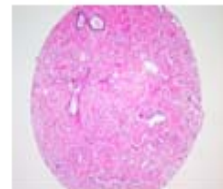
B5



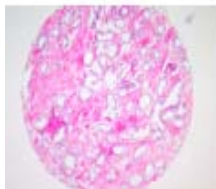
B6



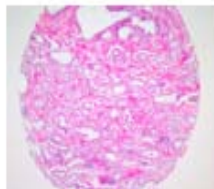
B7



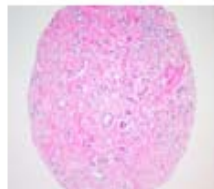
B8



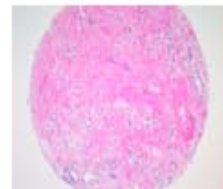
B9



B10



B11

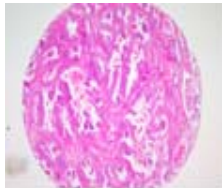


B12

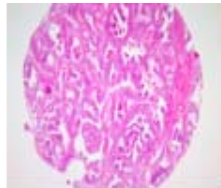
(formalin fixed)

For research use only

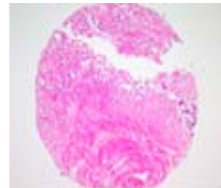
**QC sheet_LOT#122120505231
Hematoxylin and Eosin staining**



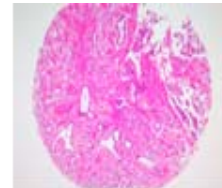
C1



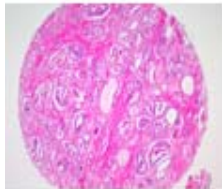
C2



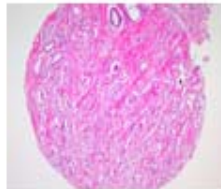
C3



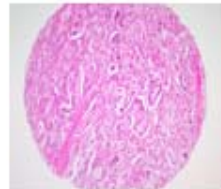
C4



C5



C6



C7



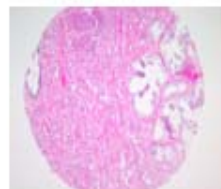
C8



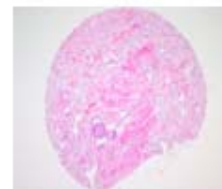
C9



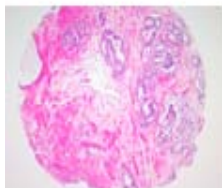
C10



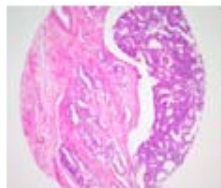
C11



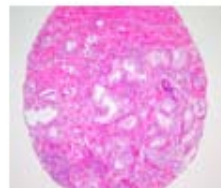
C12



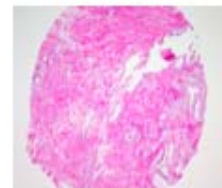
D1



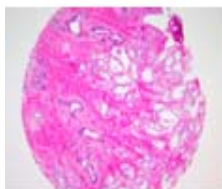
D2



D3



D4



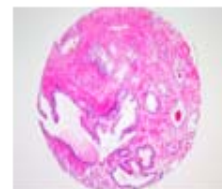
D5



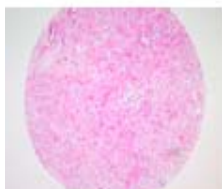
D6



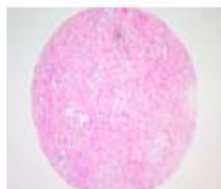
D7



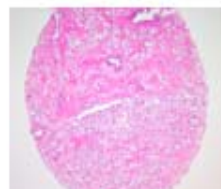
D8



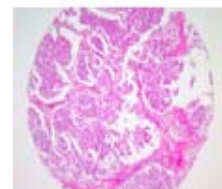
D9



D10



D11

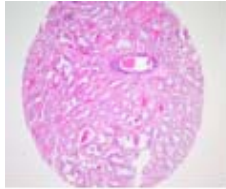


D12

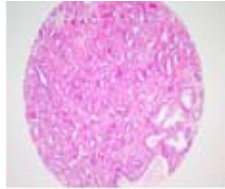
(formalin fixed)

For research use only

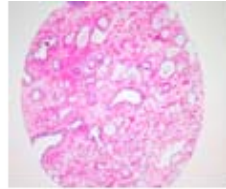
**QC sheet_LOT#122120505231
Hematoxylin and Eosin staining**



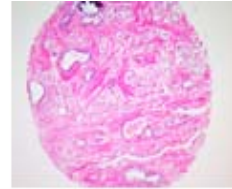
E1



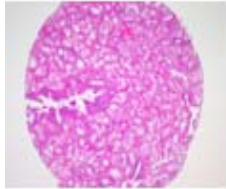
E2



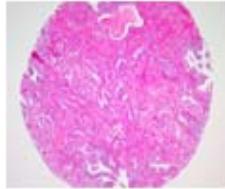
E3



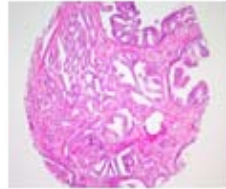
E4



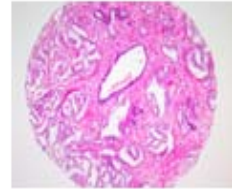
E5



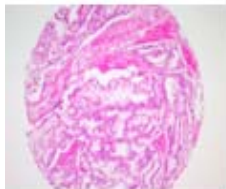
E6



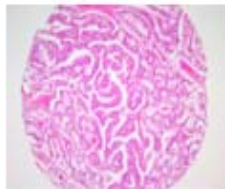
E7



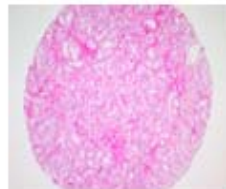
E8



E9



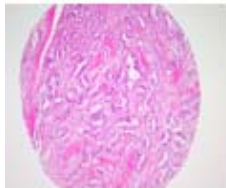
E10



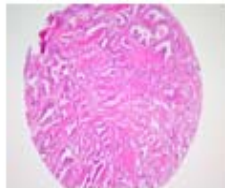
E11



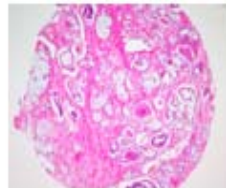
E12



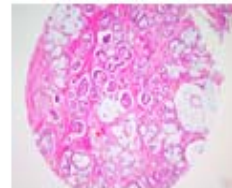
F1



F2



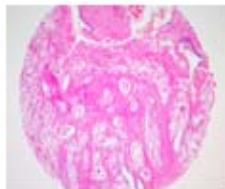
F3



F4



F5



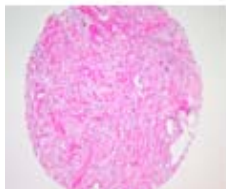
F6



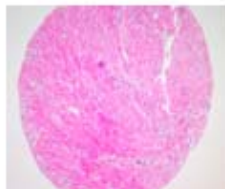
F7



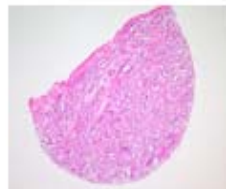
F8



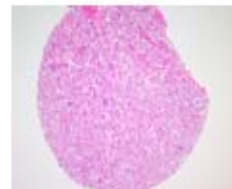
F9



F10



F11

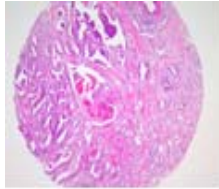


F12

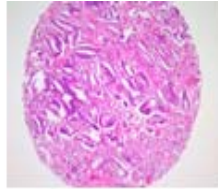
(formalin fixed)

For research use only

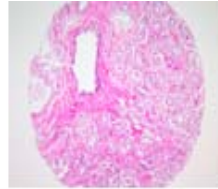
**QC sheet_LOT#122120505231
Hematoxylin and Eosin staining**



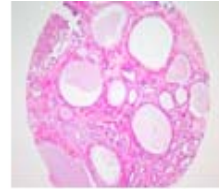
G1



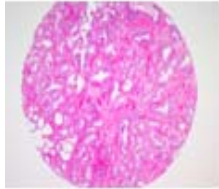
G2



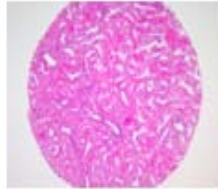
G3



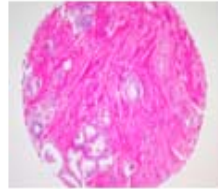
G4



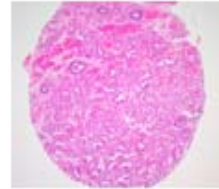
G5



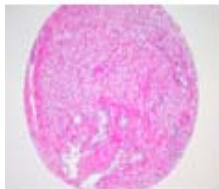
G6



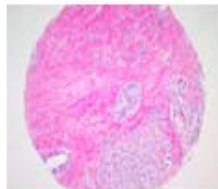
G7



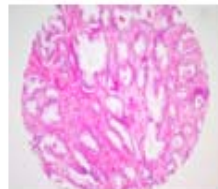
G8



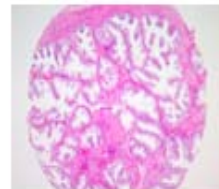
G9



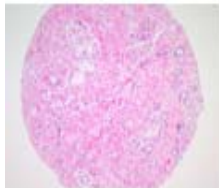
G10



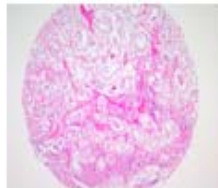
G11



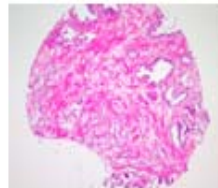
G12



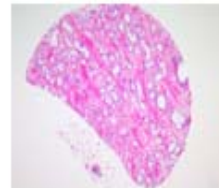
H1



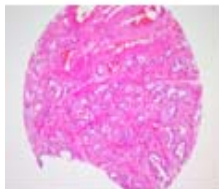
H2



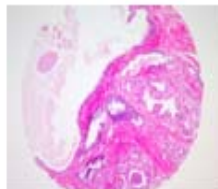
H3



H4



H5



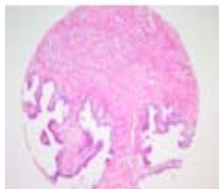
H6



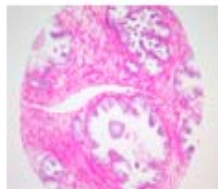
H7



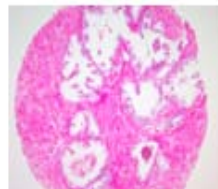
H8



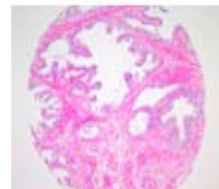
H9



H10



H11



H12

A222(II): Prostate Cancer tissues_stage 2,3

No	Coordinate	Age	Pathology	G	V	Size	L	Z	PNI	ANG	A	B	SV	PIN	LN	PSA	Stage	Multi
1	1,2	59	Adenocarcinoma	6	5	2	l	p	0	0	0	0	0	0	0	0.02	2	
2	3,4	62	Adenocarcinoma	6	5	1	b	p	0	0	1	0	0	1	0	2.22	2	
3	5,6	52	Adenocarcinoma	6	5	1	b	p	0	0	1	0	0	1	0	9.41	2	x2
4	7,8	78	Adenocarcinoma	7	20	3	b	pt	1	0	1	0	0	0	0	0.35	2	
5	9,10	69	Adenocarcinoma	9	20	3	b	pt	1	0	1	0	0	1	0	135.45	2	x2
6	11,12	68	Adenocarcinoma	9	70	4	b	pt	1	0	0	0	0	1	0	17.09	2	
7	1,2	64	Adenocarcinoma	7	20	4	b	p	1	0	0	0	0	1	0	16.55	2	
8	3,4	69	Adenocarcinoma	7	15	1.7	b	pt	1	0	0	1	0	1	1	17.1	2	x2
9	5,6	67	Adenocarcinoma	7	30		b	p	1	0	1	1	0	1	0	1.77	2	x4
10	7,8	67	Adenocarcinoma	7	10	2	l	p	1	0	1	1	0	1	0	5.6	2	
11	9,10	60	Adenocarcinoma	9	25	2.4	l	p	1	0	1	0	0	0	0	13.88	2	
12	11,12	62	Adenocarcinoma	9	20	2.7	b	p	1	0	0	1	0	1	0	7.79	2	
13	1,2	62	Adenocarcinoma	7	15	2	b	p	0	0	0	0	0	1	0	7.83	2	x2
14	3,4	68	Adenocarcinoma	7	5	1	b	p	1	0	1	0	0	1	0	9.03	2	x4
15	5,6	58	Adenocarcinoma	7	10	1.3	b	p	1	0	0	0	0	0	0	0.07	2	
16	7,8	73	Adenocarcinoma	7	10	2	b	pt	0	0	0	1	0	1	0	9.53	2	x4
17	9,10	57	Adenocarcinoma	9	40	4	b	p	1	0	0	0	0	1	0	10.54	2	x3
18	11,12	53	Adenocarcinoma	9	5	1.3	r	p	1	0	0	0	0	1	0	5.19	2	
19	1,2	58	Adenocarcinoma	7	5	1.1	b	p	1	0	1	0	0	1	0	5.42	2	x2
20	3,4	60	Adenocarcinoma	7	5	1.1	l	p	0	0	0	0	0	1	0	0.28	2	
21	5,6	64	Adenocarcinoma	7	5	1.2	r	p	1	0	0	0	0	1	0	0.04	2	
22	7,8	68	Adenocarcinoma	7	10	2	b	p	1	0	1	0	0	1	0	6.9	2	
23	9,10	46	Adenocarcinoma	9	30	2.4	b	t	1	0	0	0	0	0	0	26.95	2	
24	11,12	66	Adenocarcinoma	9	20	2.5	b	pt	1	0	1	0	0	0	0	9.12	2	
25	1,2	62	Adenocarcinoma	7	10	1.7	b	p	1	0	1	1	0	1	0	5.52	2	x2
26	3,4	59	Adenocarcinoma	7	10	1.8	b	t	0	0	1	0	0	0	0	0.04	2	x2
27	5,6	63	Adenocarcinoma	7	15	1.8	b	p	1	0	0	1	0	1	0	4.8	2	
28	7,8	57	Adenocarcinoma	7	10	1.2	r	tc	0	0	1	0	0	1	0	5.12	2	
29	9,10	64	Adenocarcinoma	7	40	2.8	b	pt	0	0	1	0	0	1	0	19.17	3	
30	11,12	64	Adenocarcinoma	7	15	2.2	b	pt	0	0	1	1	0	1	0	6.1	3	x2
31	1,2	67	Adenocarcinoma	7	10	2.5	r	p	0	0	1	1	0	0	0	5	2	
32	3,4	61	Adenocarcinoma	7	10	2.2	b	p	1	0	1	0	0	1	0	0.15	2	

A222(II): Prostate Cancer tissues_stage 2,3

No	Coordinate	Age	Pathology	G	V	Size	L	Z	PNI	ANG	A	B	SV	PIN	LN	PSA	Stage	Multi		
33	F	5,6	70	Adenocarcinoma	7	20	2.5	b	p	0	0	1	0	0	0	0	4.37	2	x2	
34		7,8	66	Adenocarcinoma	8	10	1.4	b	p	1	0	0	0	0	1	0	10.37	2	x2	
35		9,10	66	Adenocarcinoma	9	95	3.8	b	p	1	1	1	1	1	0	0	3.5	3		
36		11,12	65	Adenocarcinoma	9	90	6	b	e	1	0	1	1	0	1	0	23.82	3		
37	G	1,2	64	Adenocarcinoma	8	15	2.5	b	p	1	0	1	1	0	1	0	15.6	2	x4	
38		3,4	70	Adenocarcinoma	8	15	4	b	p	1	0	1	1	0	1	0	10.12	2		
39		5,6	56	Adenocarcinoma	8	15	1.8	b	p	1	0	1	0	0	1	0	10.38	2	x4	
40		7,8	57	Adenocarcinoma	8	30	4.2	b	p	1	0	1	1	0	0	0	14.24	2		
41		9,10	66	Adenocarcinoma	9	80	3.7	b	p	0	0	1	1	0	0	0	98.5	3		
42		11	62	Non-neoplastic	non-neoplastic from B11,12															
43		12	60	Non-neoplastic	non-neoplastic from D3,4															
44	H	1,2	68	Adenocarcinoma	8	10	1.4	r	p	1	0	1	1	0	0	0	13	2		
45		3,4	53	Adenocarcinoma	8	25		r	p	1	1	0	1	0	0	0	5.1	2		
46		5,6	71	Adenocarcinoma	9	15	2	b	pc	1	0	1	0	0	1	0	7.93	2	x2	
47		7,8	51	Adenocarcinoma	9	20	2.1	b	p	0	0	1	0	0	1	0	0.06	2		
48		9	62	Non-neoplastic	non-neoplastic from A3,4															
49		10	67	Non-neoplastic	non-neoplastic from B5,6															
50		11	64	Non-neoplastic	non-neoplastic from G1,2															
51		12	60	Non-neoplastic	non-neoplastic from B9,10															