

(formalin fixed)

For research use only

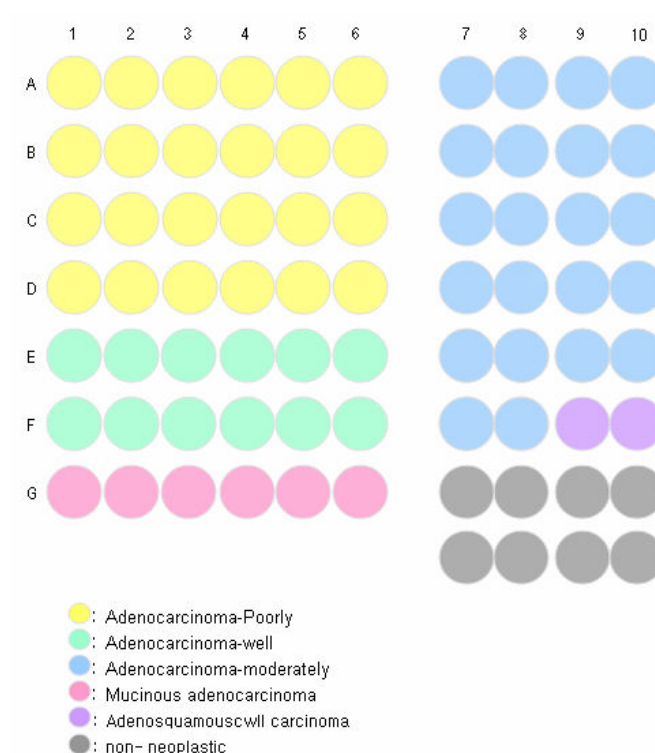
Specifications:

- No. of cases: 33
- Tissue type: Pancreas cancer tissues
- No. of spots: 2 spots from each cancer case (66 spots)
8 non-neoplastic spots (8 spots)
- Total spots: 74
- Corresponding normal tissues with cancers: Yes
- Diameter: 1.0 mm

Documents:

- Product specification: layout, summary of tissue spots
- H&E stained images
- Detailed pathological information

Layout:



(formalin fixed)

For research use only

Summary of tissue spots

No	Coordinate	Sex	Age	Histological Diagnosis	Differentiate	Stage	
1	A	1,2	m	67	Adeno carcinoma	Poorly	IIB
2	A	3,4	m	58	Adeno carcinoma	Poorly	IIB
3	A	5,6	m	68	Adeno carcinoma	Poorly	IIA
4	A	7,8	m	72	Adeno carcinoma	Moderately	IIA
5	A	9,10	m	57	Adeno carcinoma	Moderately	IIB
6	B	1,2	m	76	Adeno carcinoma	Poorly	IIA
7	B	3,4	m	57	Adeno carcinoma	Poorly	IIB
8	B	5,6	m	55	Adeno carcinoma	Poorly	IIA
9	B	7,8	f	64	Adeno carcinoma	Moderately	IB
10	B	9,10	m	64	Adeno carcinoma	Moderately	IIB
11	C	1,2	f	54	Adeno carcinoma	Poorly	III
12	C	3,4	m	52	Adeno carcinoma	Poorly	IIB
13	C	5,6	f	52	Adeno carcinoma	Poorly	IIB
14	C	7,8	m	61	Adeno carcinoma	Moderately	III
15	C	9,10	f	68	Adeno carcinoma	Moderately	IIB
16	D	1,2	f	63	Adeno carcinoma	Poorly	IIB
17	D	3,4	m	49	Adeno carcinoma	Poorly	IIB
18	D	5,6	f	45	Adeno carcinoma	Poorly	IB
19	D	7,8	m	67	Adeno carcinoma	Moderately	IIA
20	D	9,10	f	54	Adeno carcinoma	Moderately	IIA
21	E	1,2	m	47	Adeno carcinoma	Well	IB
22	E	3,4	f	65	Adeno carcinoma	Well	IIB
23	E	5,6	m	66	Adeno carcinoma	Well	IIA
24	E	7,8	m	73	Adeno carcinoma	Moderately	IIA
25	E	9,10	m	61	Adeno carcinoma	Moderately	IIA
26	F	1,2	m	66	Adeno carcinoma	Well	IIB
27	F	3,4	m	53	Adeno carcinoma	Well	IIB
28	F	5,6	m	70	Adeno carcinoma	Well	IIB
29	F	7,8	m	61	Adeno carcinoma	Moderately	IIB
30	F	9,10	f	47	Adenosquamous cell carcinoma	Adenosquamous	IIB

(formalin fixed)

For research use only

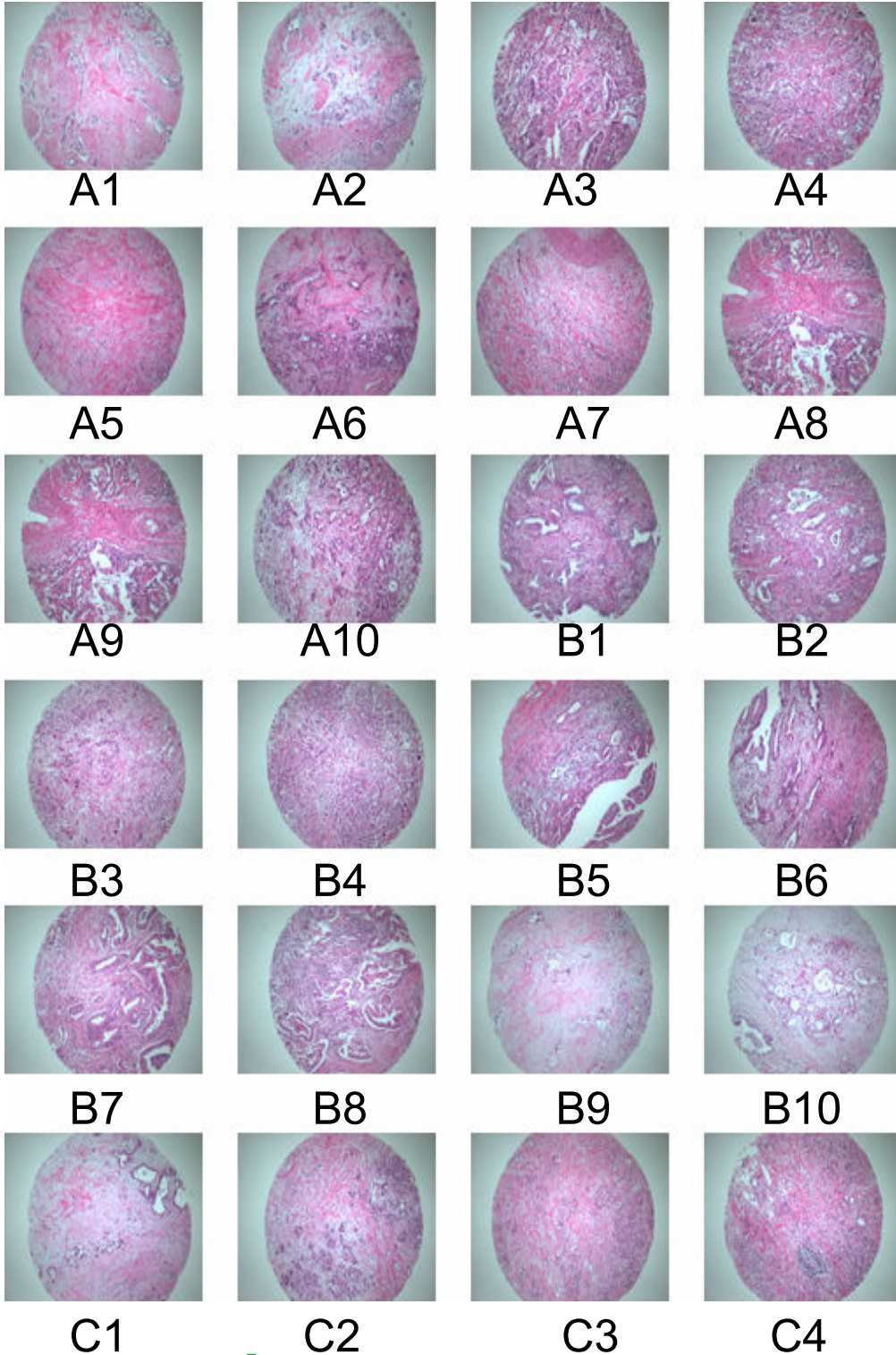
Summary of tissue spots

No	Coordinate	Sex	Age	Histological Diagnosis	Differentiate	Stage
31	G 1,2	m	58	Mucinous adeno carcinoma	Mucinous	IA
32	G 3,4	m	62	Mucinous adeno carcinoma	Mucinous	IIA
33	G 5,6	m	50	Mucinous adeno carcinoma	Mucinous	IIB
34	G 7	m	47	Non-neoplastic from E1,2		
35	G 8	m	66	Non-neoplastic from E5,6		
36	G 9	m	53	Non-neoplastic from F3,4		
37	G 10	m	58	Non-neoplastic from G1,2		
38	H 7	m	72	Non-neoplastic from A7,8		
39	H 8	m	57	Non-neoplastic from A9,10		
40	H 9	m	64	Non-neoplastic from B9,10		
41	H 10	f	54	Non-neoplastic from D9,10		

(formalin fixed)

For research use only

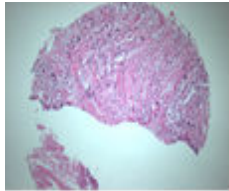
QC sheet_LOT#122120612141
Hematoxylin and Eosin staining



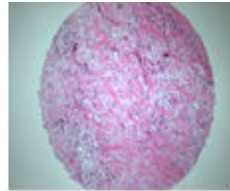
(formalin fixed)

For research use only

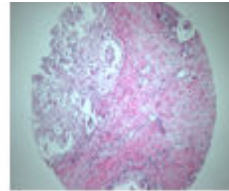
QC sheet_LOT#122120612141
Hematoxylin and Eosin staining



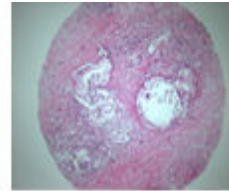
C5



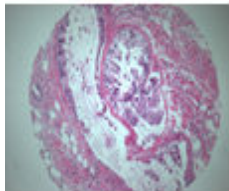
C6



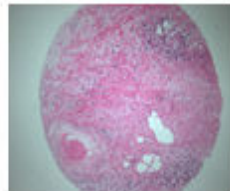
C7



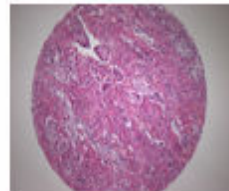
C8



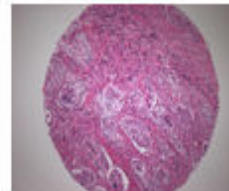
C9



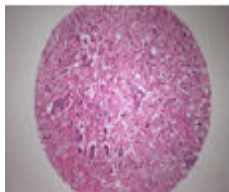
C10



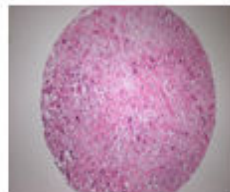
D1



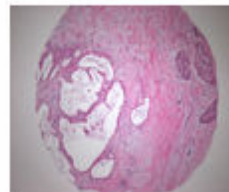
D2



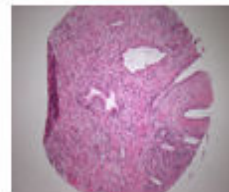
D3



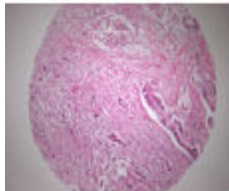
D4



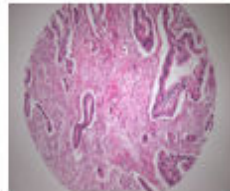
D5



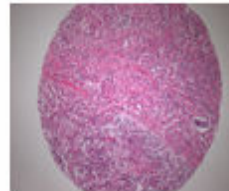
D6



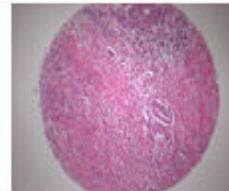
D7



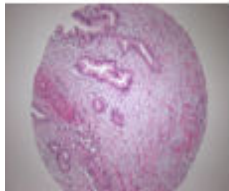
D8



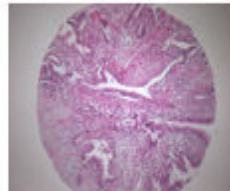
D9



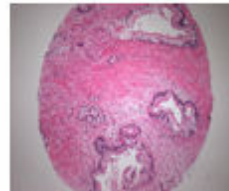
D10



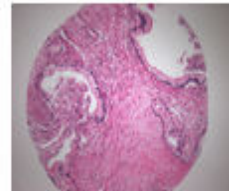
E1



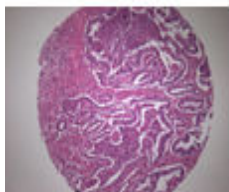
E2



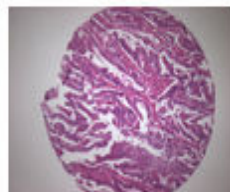
E3



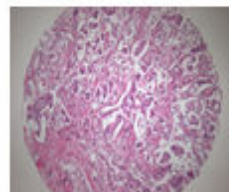
E4



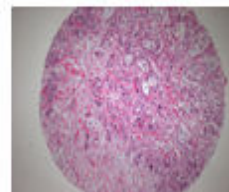
E5



E6



E7

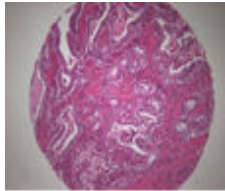


E8

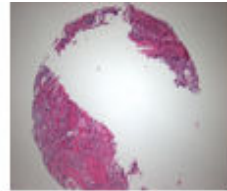
(formalin fixed)

For research use only

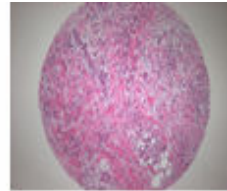
QC sheet_LOT#122120612141
Hematoxylin and Eosin staining



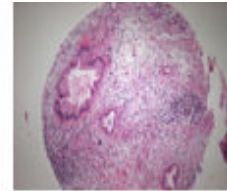
E9



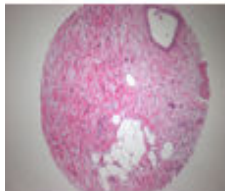
E10



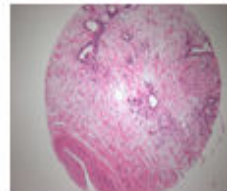
F1



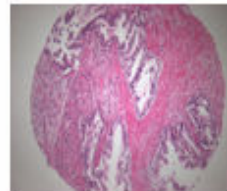
F2



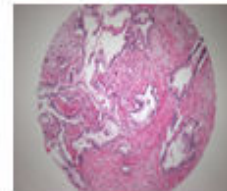
F3



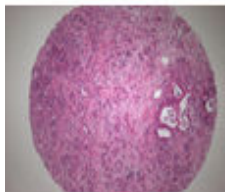
F4



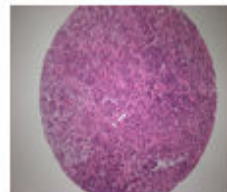
F5



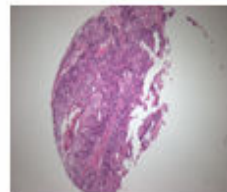
F6



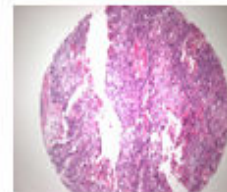
F7



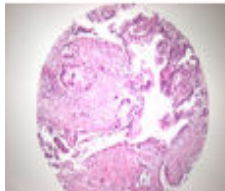
F8



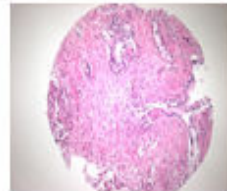
F9



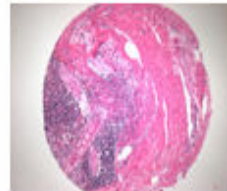
F10



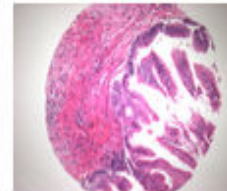
G1



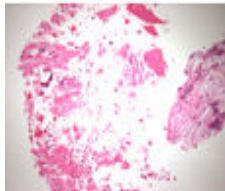
G2



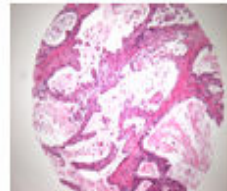
G3



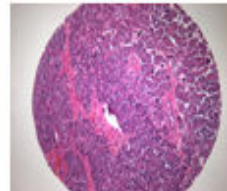
G4



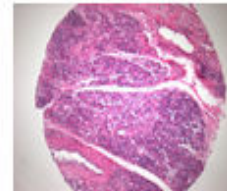
G5



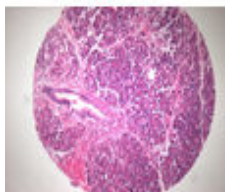
G6



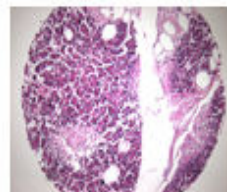
G7



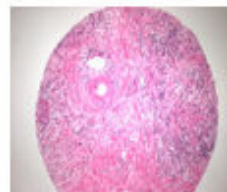
G8



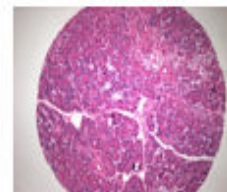
G9



G10



H7

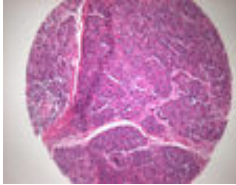


H8

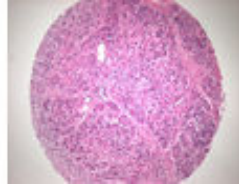
(formalin fixed)

For research use only

QC sheet_LOT#122120612141
Hematoxylin and Eosin staining



H9



H10

A207IV: Pancreas cancer tissues

No	Coordinate	Sex	Age	Histological Diagnosis	Differentiate	Site	Size	T	N	M	Stage	
1	A	1,2	m	67	adeno carcinoma	poorly	body	2.5	3	1	0	IIB
2	A	3,4	m	58	adeno carcinoma	poorly	head	2.5	3	1	0	IIB
3	A	5,6	m	68	adeno carcinoma	poorly	head	2.2	2	1	0	IIA
4	A	7,8	m	72	adeno carcinoma	moderately	head	3.3	3	0	0	IIA
5	A	9,10	m	57	adeno carcinoma	moderately	head	3.5	3	1	0	IIB
6	B	1,2	m	76	adeno carcinoma	poorly	tail	2.8	3	0	0	IIA
7	B	3,4	m	57	adeno carcinoma	poorly	head	3	3	1	0	IIB
8	B	5,6	m	55	adeno carcinoma	poorly	head	3	3	0	0	IIA
9	B	7,8	f	64	adeno carcinoma	moderately	head	2.5	2	0	0	IB
10	B	9,10	m	64	adeno carcinoma	moderately	body	7	3	1	0	IIB
11	C	1,2	f	54	adeno carcinoma	poorly	head	2.5	4	1	0	III
12	C	3,4	m	52	adeno carcinoma	poorly	head	3	3	1	0	IIB
13	C	5,6	f	52	adeno carcinoma	poorly	body	5	3	1	0	IIB
14	C	7,8	m	61	adeno carcinoma	moderately	head	4.5	4	0	0	III
15	C	9,10	f	68	adeno carcinoma	moderately	head	1.5	3	1	0	IIB
16	D	1,2	f	63	adeno carcinoma	poorly	head	4	3	1	0	IIB
17	D	3,4	m	49	adeno carcinoma	poorly	body	3	3	1	0	IIB
18	D	5,6	f	45	adeno carcinoma	poorly	body	4.5	2	0	0	IB
19	D	7,8	m	67	adeno carcinoma	moderately	head	3	3	0	0	IIA
20	D	9,10	f	54	adeno carcinoma	moderately	head	3	3	0	0	IIA
21	E	1,2	m	47	adeno carcinoma	well	head	2.5	2	0	0	IB
22	E	3,4	f	65	adeno carcinoma	well	head	3.5	3	1	0	IIB
23	E	5,6	m	66	adeno carcinoma	well	body	4	3	0	0	IIA
24	E	7,8	m	73	adeno carcinoma	moderately	body	4	3	0	0	IIA
25	E	9,10	m	61	adeno carcinoma	moderately	head	4	3	0	0	IIA
26	F	1,2	m	66	adeno carcinoma	well	head	2.5	3	1	0	IIB
27	F	3,4	m	53	adeno carcinoma	well	head	1.7	3	1	0	IIB
28	F	5,6	m	70	adeno carcinoma	well	head	3.2	3	1	0	IIB
29	F	7,8	m	61	adeno carcinoma	moderately	tail	3	3	1	0	IIB
30	F	9,10	f	47	adenosquamous cell carcinoma	adenosquamous	tail	9	3	1	0	IIB
31	G	1,2	m	58	mucinous adeno carcinoma	mucinous	body	1.9	1	0	0	IA
32	G	3,4	m	62	mucinous adeno carcinoma	mucinous	body	4	3	0	0	IIA

A207IV: Pancreas cancer tissues

No	Coordinate	Sex	Age	Histological Diagnosis	Differentiate	Site	Size	T	N	M	Stage
33	G 5,6	m	50	mucinous adeno carcinoma	mucinous	head	3.3	3	1	0	IIB
34	G 7	m	47	non-neoplastic		non-neoplastic from E1,2					
35	G 8	m	66	non-neoplastic		non-neoplastic from E5,6					
36	G 9	m	53	non-neoplastic		non-neoplastic from F3,4					
37	G 10	m	58	non-neoplastic		non-neoplastic from G1,2					
38	H 7	m	72	non-neoplastic		non-neoplastic from A7,8					
39	H 8	m	57	non-neoplastic		non-neoplastic from A9,10					
40	H 9	m	64	non-neoplastic		non-neoplastic from B9,10					
41	H 10	f	54	non-neoplastic		non-neoplastic from D9,10					