

(formalin fixed)

For research use only

**Specifications:**

- No. of cases: 30
- Tissue type: Pancreas cancer tissues
- No. of spots: 2 spots from each cancer case (60 spots)  
8 non-neoplastic spots (8 spots)
- Total spots: 68
- Corresponding normal tissues with cancers: Yes
- Diameter: 1.0 mm

**Documents:**

- Product specification: layout, summary of tissue spots
- H&E stained images
- Detailed pathological information

**Layout:**



(formalin fixed)

For research use only

**Summary of tissue spots**

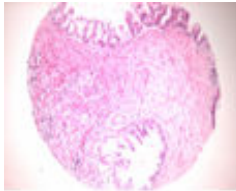
No	Coordinate	Sex	Age	Diagnosis	Differentiate	stage	
1	A	1,2	f	72	Adenocarcinoma	Moderately	IIA
2	A	3,4	m	61	Adenocarcinoma	Moderately	IIB
3	A	5,6	f	72	Adenocarcinoma	Poorly	IIA
4	A	7,8	f	64	Adenocarcinoma	Poorly	IIB
5	B	1,2	m	49	Adenocarcinoma	Moderately	III
6	B	3,4	f	67	Adenocarcinoma	Moderately	IIB
7	B	5,6	f	56	Adenocarcinoma	Poorly	III
8	B	7,8	m	54	Adenocarcinoma	Poorly	IIA
9	C	1,2	f	46	Adenocarcinoma	Moderately	IIB
10	C	3,4	m	47	Adenocarcinoma	Moderately	IIB
11	C	5,6	f	64	Adenocarcinoma	Poorly	IIB
12	C	7,8	f	54	Adenocarcinoma	Poorly	IIB
13	D	1,2	m	63	Adenocarcinoma	Moderately	IB
14	D	3,4	f	45	Adenocarcinoma	Moderately	IIA
15	D	5,6	f	47	Adenocarcinoma	Poorly	IIB
16	D	7,8	m	74	Adenocarcinoma	Poorly	IIA
17	E	1,2	m	70	Adenocarcinoma	Moderately	IIA
18	E	3,4	M	54	Adenocarcinoma	Moderately	IIA
19	E	5,6	f	38	Adenocarcinoma	Poorly	IIA
20	E	7,8	m	68	Adenocarcinoma	Poorly	IV
21	F	1,2	m	47	Adenocarcinoma	Moderately	III
22	F	3,4	m	61	Adenocarcinoma	Moderately	IIA
23	F	5,6	f	61	Adenocarcinoma	Undifferentiated	IIB
24	F	7,8	f	71	Adenocarcinoma		IIA
25	G	1,2	m	61	Adenocarcinoma	Moderately	IIB
26	G	3,4	m	80	Adenocarcinoma	Moderately	IIB
27	G	5	m	49	Non-neoplastic from B1,2		
28	G	6	f	56	Non-neoplastic from B5,6		
29	G	7	f	47	Non-neoplastic from D5,6		
30	G	8	m	54	Non-neoplastic from E3,4		
31	H	1,2	m	32	Adenocarcinoma	Moderately	IIB
32	H	3,4	f	71	Adenocarcinoma	Moderately	IIA
33	H	5	f	38	Non-neoplastic from E5,6		
34	H	6	m	61	Non-neoplastic from F3,4		
35	H	7	f	61	Non-neoplastic from F5,6		
36	H	8	m	61	Non-neoplastic from G1,2		
37	I	1,2	m	43	Adenocarcinoma	Moderately	IIA
38	I	3,4	f	78	Adenocarcinoma	Moderately	IIA

**A207 V - Pancreas cancer tissues**

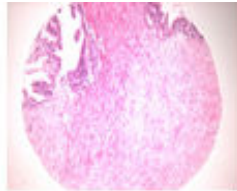
(formalin fixed)

For research use only

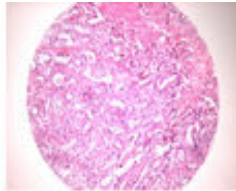
**QC sheet\_LOT#122120701201  
Hematoxylin and Eosin staining**



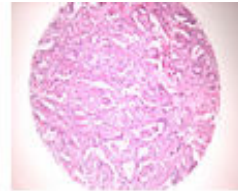
A1



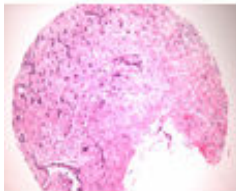
A2



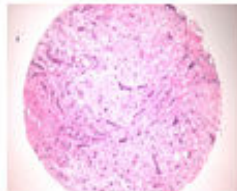
A3



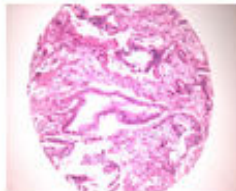
A4



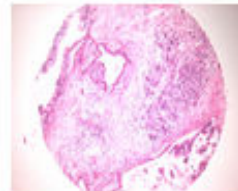
A5



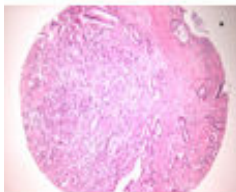
A6



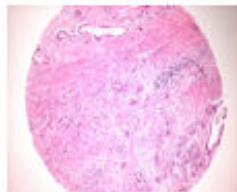
A7



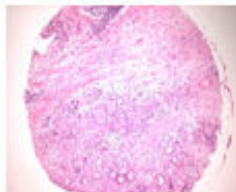
A8



B1



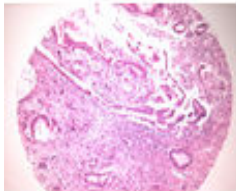
B2



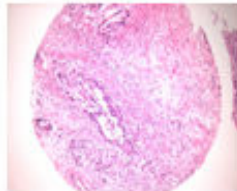
B3



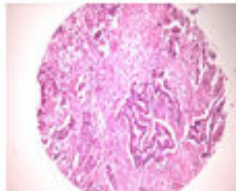
B4



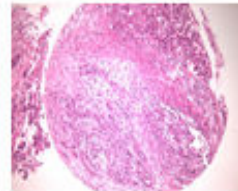
B5



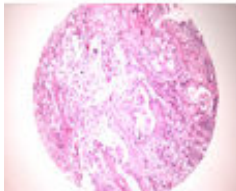
B6



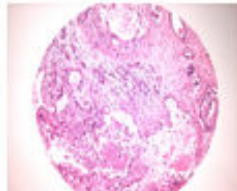
B7



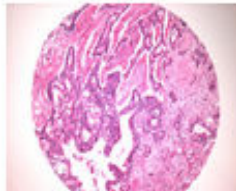
B8



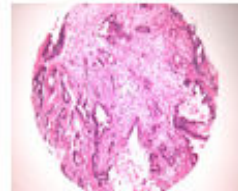
C1



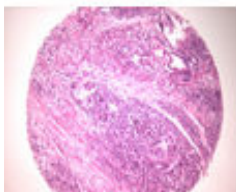
C2



C3



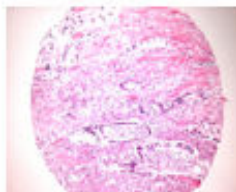
C4



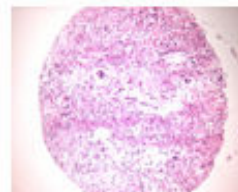
C5



C6



C7

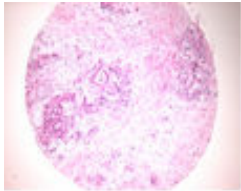


C8

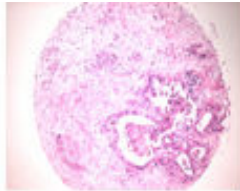
(formalin fixed)

For research use only

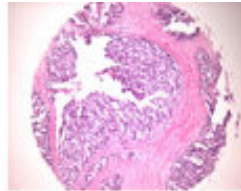
QC sheet\_LOT#122120701201  
Hematoxylin and Eosin staining



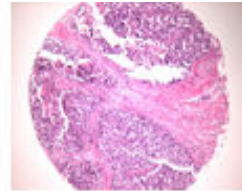
D1



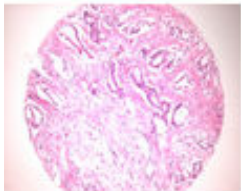
D2



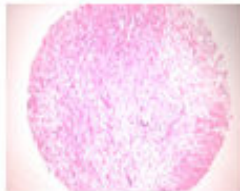
D3



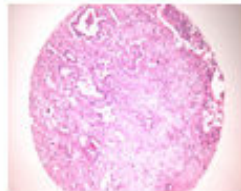
D4



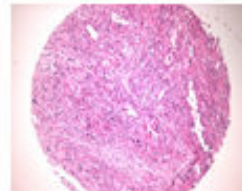
D5



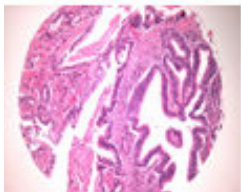
D6



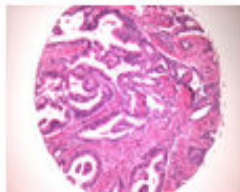
D7



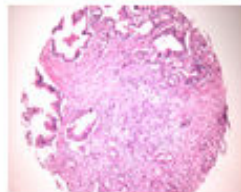
D8



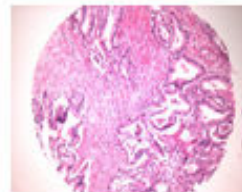
E1



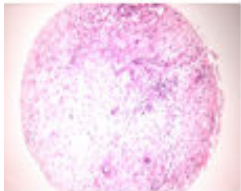
E2



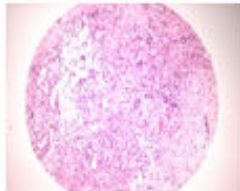
E3



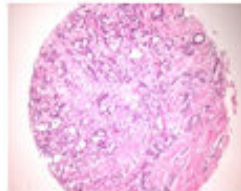
E4



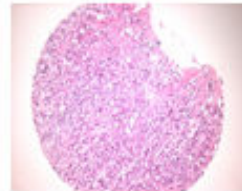
E5



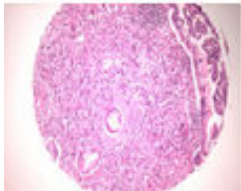
E6



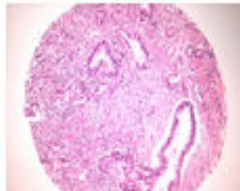
E7



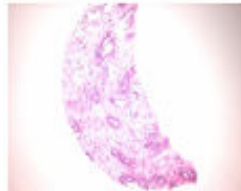
E8



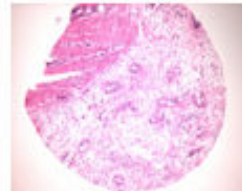
F1



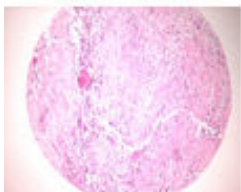
F2



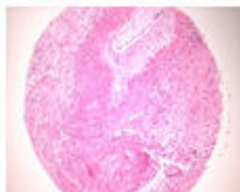
F3



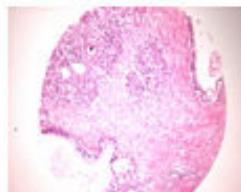
F4



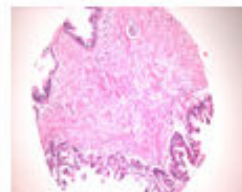
F5



F6



F7

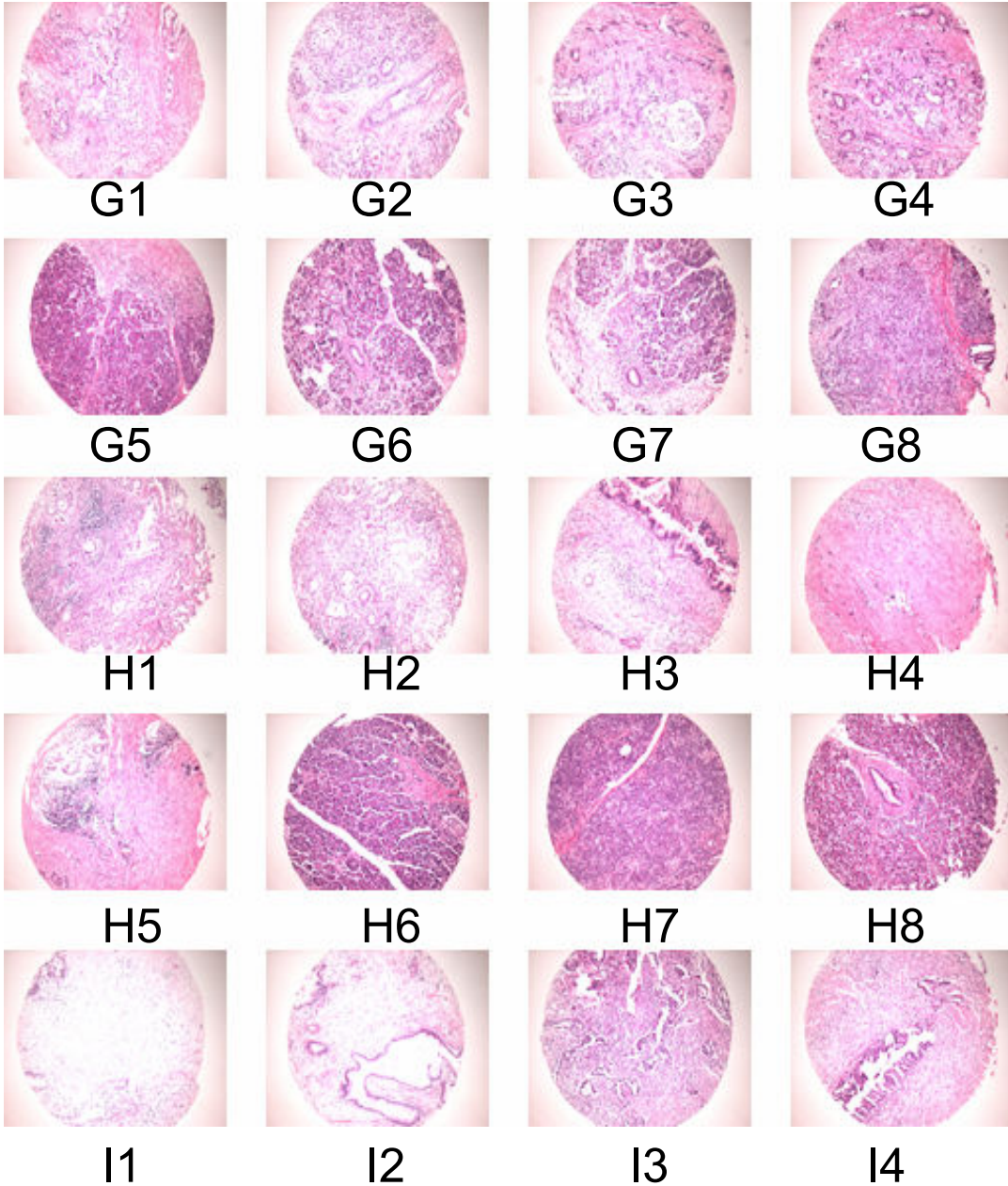


F8

(formalin fixed)

For research use only

**QC sheet\_LOT#122120701201**  
**Hematoxylin and Eosin staining**



**A2207 V : Pancreas cancer tissues**

No	Coordinate	Sex	Age	Diagnosis	Differentiate	Site	Size	T	N	M	stage	
1	A	1,2	F	72	adenocarcinoma	moderately	body	6.5	3	0	0	IIA
2	A	3,4	M	61	adenocarcinoma	moderately	tail	3.5	3	1	0	IIB
3	A	5,6	F	72	adenocarcinoma	poorly	body	2.5	3	0	0	IIA
4	A	7,8	F	64	adenocarcinoma	poorly	head	2.1	3	1	0	IIB
5	B	1,2	M	49	adenocarcinoma	moderately	head	2.5	4	0	0	III
6	B	3,4	F	67	adenocarcinoma	moderately	head	1.6	3	1	0	IIB
7	B	5,6	F	56	adenocarcinoma	poorly	head	3	4	1	0	III
8	B	7,8	M	54	adenocarcinoma	poorly	body	3.8	3	0	0	IIA
9	C	1,2	F	46	adenocarcinoma	moderately	head	3	3	1	0	IIB
10	C	3,4	M	47	adenocarcinoma	moderately	head	2.5	3	1	0	IIB
11	C	5,6	F	64	adenocarcinoma	poorly	head	3.2	3	1	0	IIB
12	C	7,8	F	54	adenocarcinoma	poorly	body	2	3	1	0	IIB
13	D	1,2	M	63	adenocarcinoma	moderately	head	4	2	0	0	IB
14	D	3,4	F	45	adenocarcinoma	moderately	head	1.5	3	0	0	IIA
15	D	5,6	F	47	adenocarcinoma	poorly	head	3	2	1	0	IIB
16	D	7,8	M	74	adenocarcinoma	poorly	head	3.5	3	0	0	IIA
17	E	1,2	M	70	adenocarcinoma	moderately	head	2.5	3	0	0	IIA
18	E	3,4	M	54	adenocarcinoma	moderately	body	3	3	0	0	IIA
19	E	5,6	F	38	adenocarcinoma	poorly	tail	11	3	0	0	IIA
20	E	7,8	M	68	adenocarcinoma	poorly	tail	4.5	3	1	1	IV
21	F	1,2	M	47	adenocarcinoma	moderately	head	3.5	4	1	0	III
22	F	3,4	M	61	adenocarcinoma	moderately	head	2.4	3	0	0	IIA
23	F	5,6	F	61	adenocarcinoma	undifferentiated	tail	5	3	1	0	IIB
24	F	7,8	F	71	adenocarcinoma		tail	1	3	0	0	IIA
25	G	1,2	M	61	adenocarcinoma	moderately	body	2	3	1	0	IIB
26	G	3,4	M	80	adenocarcinoma	moderately	head	3.5	3	1	0	IIB
27	G	5	M	49	non-neoplastic	non-neoplastic from B1,2						
28	G	6	F	56	non-neoplastic	non-neoplastic from B5,6						
29	G	7	F	47	non-neoplastic	non-neoplastic from D5,6						
30	G	8	M	54	non-neoplastic	non-neoplastic from E3,4						
31	H	1,2	M	32	adenocarcinoma	moderately	head	3	3	1	0	IIB
32	H	3,4	F	71	adenocarcinoma	moderately	head	3.5	3	0	0	IIA
33	H	5	F	38	non-neoplastic	non-neoplastic from E5,6						

**A2207 V : Pancreas cancer tissues**

No	Coordinate	Sex	Age	Diagnosis	Differentiate	Site	Size	T	N	M	stage
34	H 6	M	61	non-neoplastic	non-neoplastic from F3,4						
35	H 7	F	61	non-neoplastic	non-neoplastic from F5,6						
36	H 8	M	61	non-neoplastic	non-neoplastic from G1,2						
37	I 1,2	M	43	adenocarcinoma	moderately	head	5	3	0	0	IIA
38	I 3,4	F	78	adenocarcinoma	moderately	body	7	3	0	0	IIA