

(formalin fixed)

For research use only

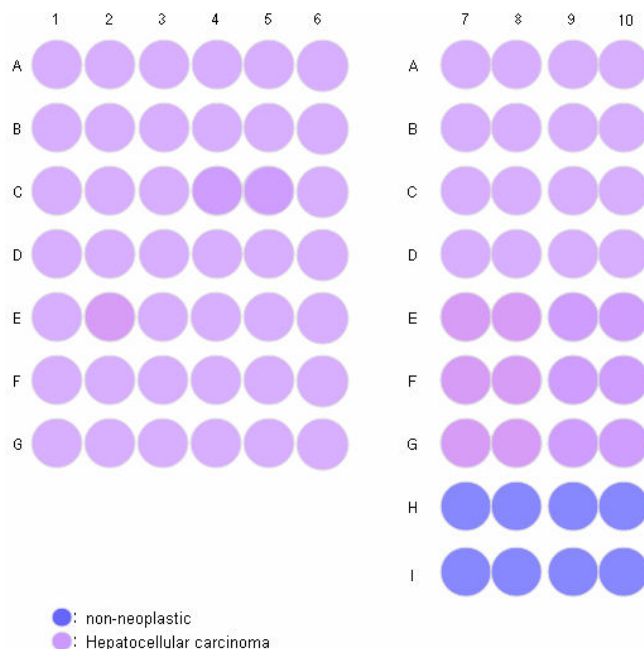
Specifications:

- No. of cases: 35
- Tissue type: Liver cancer tissues
- No. of spots: 2 spots from each cancer case (70 spots)
8 non-neoplastic spots (8 spots)
- Total spots: 78
- Corresponding normal tissues with cancers: Yes
- Diameter: 1.0 mm

Documents:

- Product specification: layout, summary of tissue spots
- H&E stained images
- Detailed pathological information

Layout:



(formalin fixed)

For research use only

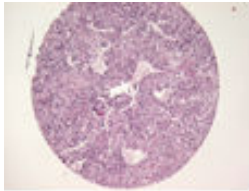
Summary of tissue spots

No	Coordinate		Sex	Age	Key word	Japanese stage
1	A	1,2	f	65	Hepatocellular carcinoma	III
2	A	3,4	m	53	Hepatocellular carcinoma	III
3	A	5,6	m	41	Hepatocellular carcinoma	III
4	A	7,8	m	49	Hepatocellular carcinoma	II
5	A	9,10	m	57	Hepatocellular carcinoma	I
6	B	1,2	m	40	Hepatocellular carcinoma	II
7	B	3,4	m	46	Hepatocellular carcinoma	III
8	B	5,6	m	39	Hepatocellular carcinoma	III
9	B	7,8	m	72	Hepatocellular carcinoma	III
10	B	9,10	m	46	Hepatocellular carcinoma	II
11	C	1,2	m	42	Hepatocellular carcinoma	II
12	C	3,4	m	58	Hepatocellular carcinoma	III
13	C	5,6	m	52	Hepatocellular carcinoma	II
14	C	7,8	m	54	Hepatocellular carcinoma	IVa
15	C	9,10	m	53	Hepatocellular carcinoma	II
16	D	1,2	m	58	Hepatocellular carcinoma	II
17	D	3,4	f	39	Hepatocellular carcinoma	II
18	D	5,6	m	48	Hepatocellular carcinoma	II
19	D	7,8	m	67	Hepatocellular carcinoma	II
20	D	9,10	m	36	Hepatocellular carcinoma	II
21	E	1,2	f	39	Hepatocellular carcinoma	III
22	E	3,4	m	55	Hepatocellular carcinoma	II
23	E	5,6	f	42	Hepatocellular carcinoma	II
24	E	7,8	m	52	Hepatocellular carcinoma	II
25	E	9,10	m	61	Hepatocellular carcinoma	II
26	F	1,2	m	55	Hepatocellular carcinoma	II
27	F	3,4	m	61	Hepatocellular carcinoma	II
28	F	5,6	m	50	Hepatocellular carcinoma	II
29	F	7,8	f	60	Hepatocellular carcinoma	II
30	F	9,10	m	50	Hepatocellular carcinoma	III
31	G	1,2	m	51	Hepatocellular carcinoma	II
32	G	3,4	m	56	Hepatocellular carcinoma	IVa
33	G	5,6	f	32	Hepatocellular carcinoma	II
34	G	7,8	m	57	Hepatocellular carcinoma	I
35	G	9,10	m	47	Hepatocellular carcinoma	II
36	H	7	m	57	Non-neoplastic from A9,10	
37	H	8	m	40	Non-neoplastic from B1,2	
38	H	9	m	39	Non-neoplastic from B5,6	
39	H	10	m	46	Non-neoplastic from B9,10	
40	I	7	m	52	Non-neoplastic from C5,6	
41	I	8	m	53	Non-neoplastic from C9,10	
42	I	9	m	48	Non-neoplastic from D5,6	
43	I	10	m	67	Non-neoplastic from D7,8	

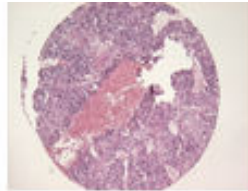
(formalin fixed)

For research use only

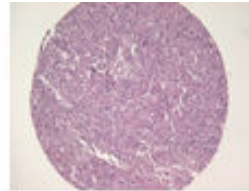
QC sheet_LOT#122120712211
Hematoxylin and Eosin staining



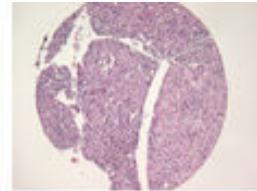
A1



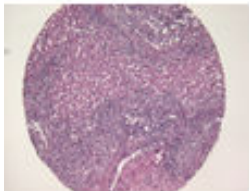
A2



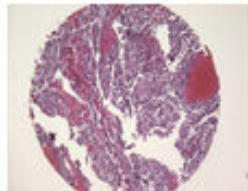
A3



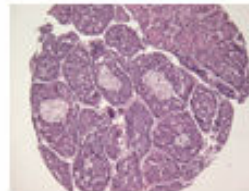
A4



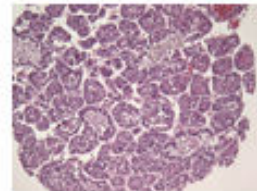
A5



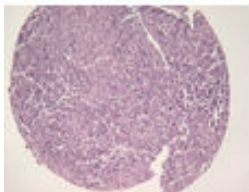
A6



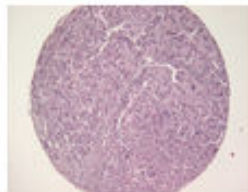
A7



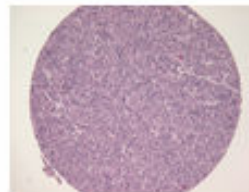
A8



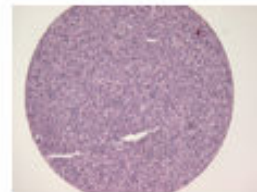
A9



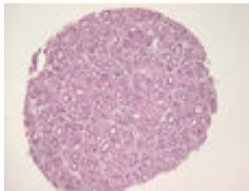
A10



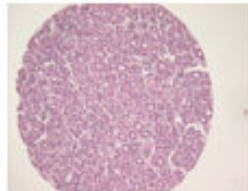
B1



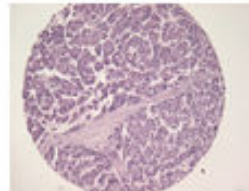
B2



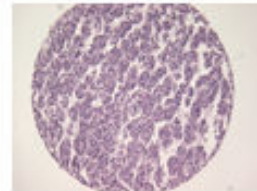
B3



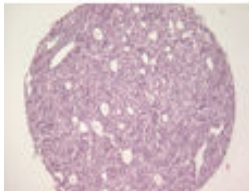
B4



B5



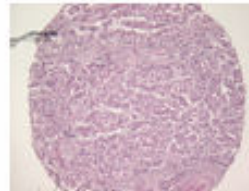
B6



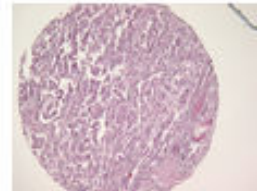
B7



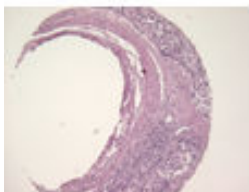
B8



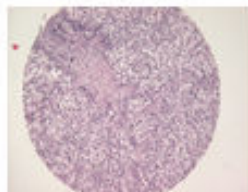
B9



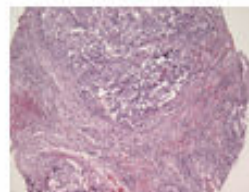
B10



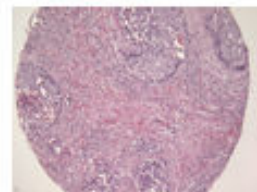
C1



C2



C3

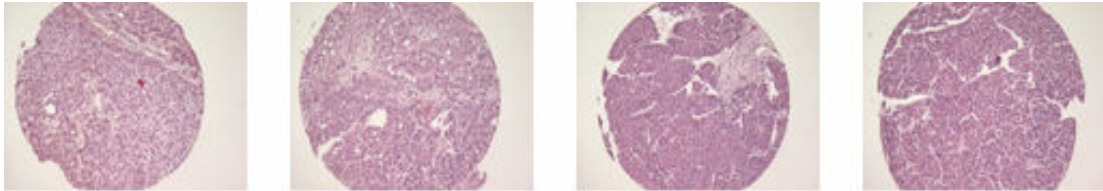


C4

(formalin fixed)

For research use only

QC sheet_LOT#122120712211
Hematoxylin and Eosin staining

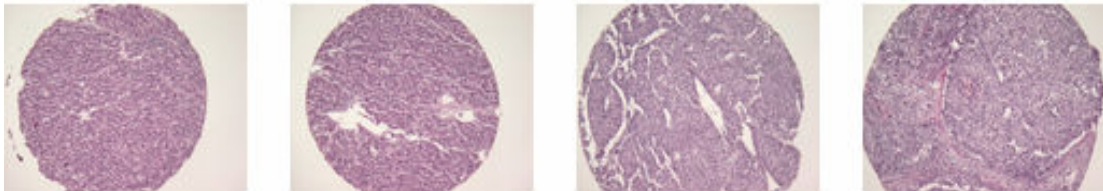


C5

C6

C7

C8

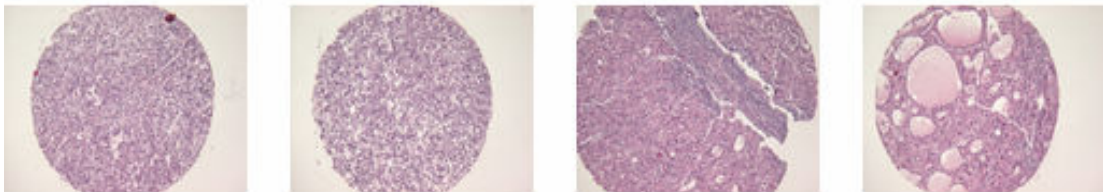


C9

C10

D1

D2

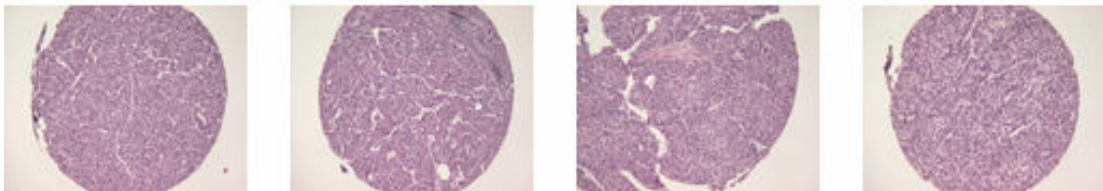


D3

D4

D5

D6

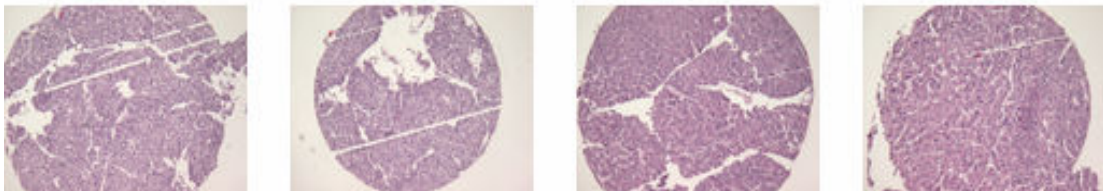


D7

D8

D9

D10

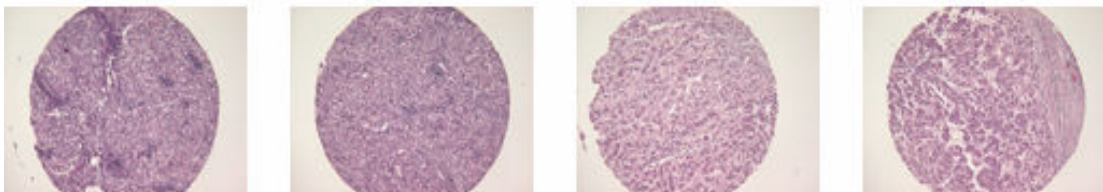


E1

E2

E3

E4



E5

E6

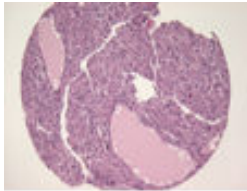
E7

E8

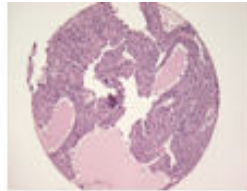
(formalin fixed)

For research use only

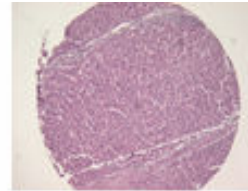
QC sheet_LOT#122120712211
Hematoxylin and Eosin staining



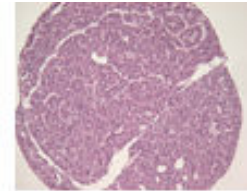
E9



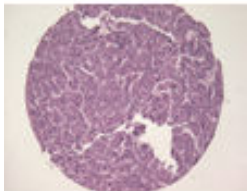
E10



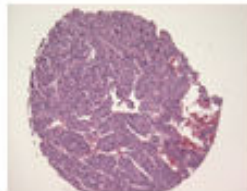
F1



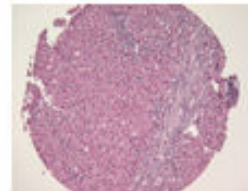
F2



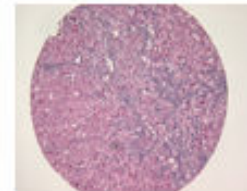
F3



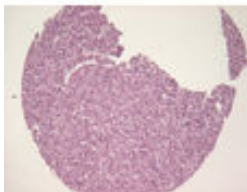
F4



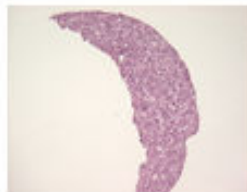
F5



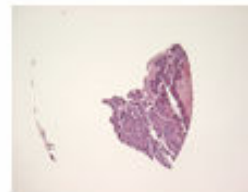
F6



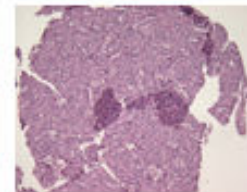
F7



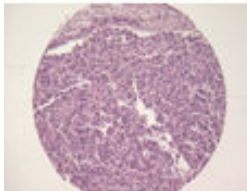
F8



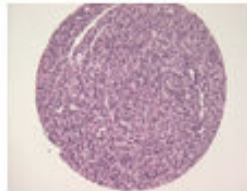
F9



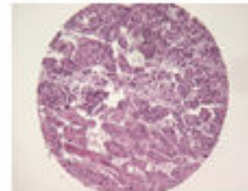
F10



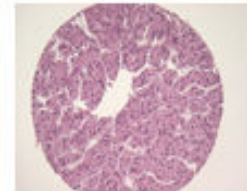
G1



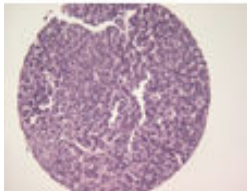
G2



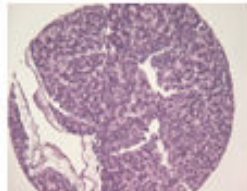
G3



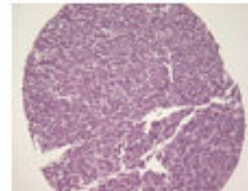
G4



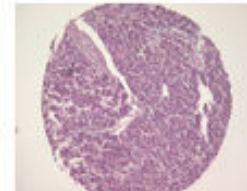
G5



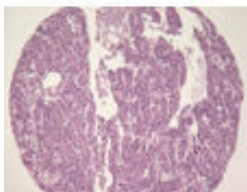
G6



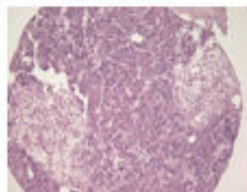
G7



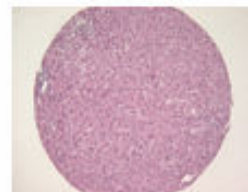
G8



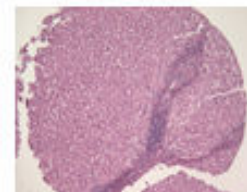
G9



G10



H7



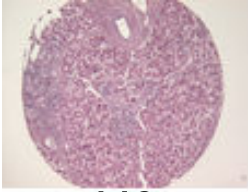
H8

A204 II - Liver cancer tissues

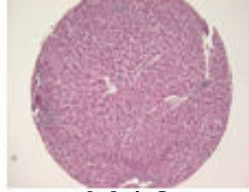
(formalin fixed)

For research use only

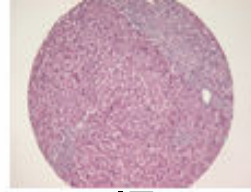
**QC sheet_LOT#122120712211
Hematoxylin and Eosin staining**



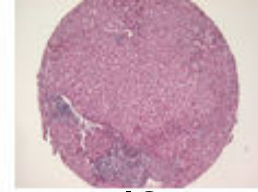
H9



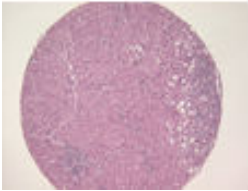
H10



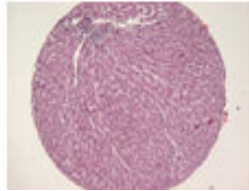
I7



I8



I9



I10

A204 II : Liver cancer tissues

No	Coordinate	Sex	Age	Key word	Histological Diagnosis	Japanese stage
1	A1,2	f	65	hepatocellular carcinoma	<p>Liver, right lobectomy: hepatocellular carcinoma</p> <ol style="list-style-type: none"> 1) expanding type, grossly 2) trabecular type, microscopically 3) Edmondson-Steiner nuclear grade : 4 4) marked tumor necrosis 5) confined within liver capsule 6) surrounding liver parenchyme : micronodular cirrhosis 7) resection margin: free of tumor 8) simple cyst with calcification in the wall . 	III
2	A3,4	m	53	hepatocellular carcinoma	<p>Liver, segmentectomy: combined hepatocellular carcinoma and cholangiocarcinoma with</p> <ol style="list-style-type: none"> 1) poorly differentiated (Edmondson grade III) 2) size: 6.5cm in diameter 3) single nodule with expansile growth pattern and focal invasion 4) frequent vascular invasion 5) intact capsule and resection margin 6) macronodular cirrhosis, with moderate inflammatory activity, B viral. 	III
3	A5,6	m	41	hepatocellular carcinoma	<ol style="list-style-type: none"> 1. Liver, segment IV, segmentectomy: hepatocellular carcinoma, moderately differentiated with 1) size: 5x3x3cm 2) confluent multinodular type 3) Edmondson-Steiner grade III 4) compact and macrotrabecular pattern 5) infiltrative growth pattern without encapsulation and satellite nodule formation 6) extensive necrosis more than(50% of total volume) 7) vascular invasion 8) capsular involvement 9) intact resection margin(safety margin: 1cm). 10) nonneoplastic liver showing chronic hepatitis, B viral, with mild inflammatory activity(grade II) and periportal fibrosis(stage II) 2. Gallbladder: free from tumor extension. 	III

A204 II : Liver cancer tissues

No	Coordinate	Sex	Age	Key word	Histological Diagnosis	Japanese stage
4	A7,8	m	49	hepatocellular carcinoma	<p>Liver, right lobe, lobectomy: hepatocellular carcinoma, moderately differentiated with</p> <ol style="list-style-type: none"> 1) size: 8cm in the greatest diameter 2) Edmondson-Steiner grade I to II 3) histologic types including trabecular and adenoid pattern 4) single nodular type with fine encapsulation 5) amount of necrosis: less than 20% 6) frequent vascular invasion 7) intrahepatic metastasis (size of nodule: 2cm in the greatest diameter) 8) intact resection margin (safety margin: less than 0.5cm) 9) surrounding nonneoplastic liver showing chronic hepatitis, B-viral, with mild inflammatory activity (grade II) and macronodular cirrhosis (stage IV) <p>Gallbladder: free from tumor extension.</p>	II
5	A9,10	m	57	hepatocellular carcinoma	<p>Liver, subsegment VIII, segmentectomy: hepatocellular carcinoma with</p> <ol style="list-style-type: none"> 1) size: 1.5cm in the greatest diameter 2) Edmondson-Steiner grade I and III, probably arising in dysplastic nodule 3) single nodular type without definite encapsulation 4) expanding growth pattern 5) intact resection margin 6) nonneoplastic liver showing chronic hepatitis, B viral, with severe inflammatory activity(grade IV) and cirrhosis (stage IV), combined with features of alcoholic liver disease. 	I

A204 II : Liver cancer tissues

No	Coordinate	Sex	Age	Key word	Histological Diagnosis	Japanese stage
6	B1,2	m	40	hepatocellular carcinoma	<p>1. Liver, segment III, segmentectomy: hepatocellular carcinoma with</p> <ol style="list-style-type: none"> 1) size: 3.5cm in the greatest diameter 2) single nodular type with perinodal growth 3) Edmondson Steiner grade III(moderately differentiated) 4) predominant histologic type: compact type 5) vascular invasion 6) hepatic capsular involvement 7) intact resection margin 8) chronic hepatitis, B viral, with mild inflammatory activity (grade II) and cirrhosis (stage IV) <p>2. Gallbladder, cholecystectomy: free from tumor extension.</p>	II
7	B3,4	m	46	hepatocellular carcinoma	<p>1. Liver, wedge resection: hepatocellular carcinoma, well differentiated, arising via dysplastic nodule with</p> <ol style="list-style-type: none"> 1) size: 4.5cm in maximal diameter 2) Edmondson-Steiner grade: I to II 3) trabecular (majority) and adenoid histologic patterns 4) confluent nodular type with expanding growth 5) necrosis: less than 10% of total volume 6) no vasclar invasion 7) resection margin: very close to tumor (less than 1mm) 8) non-neoplastic liver showing macronodular cirrhosis with mild inflammatory activity, B-viral, and combined with alcoholic liver disease <p>2. Gallbladder, cholecystectomy: free from tumor.</p>	III

A204 II : Liver cancer tissues

No	Coordinate	Sex	Age	Key word	Histological Diagnosis	Japanese stage
8	B5,6	m	39	hepatocellular carcinoma	<p>1. Liver, left, extended lobectomy: hepatocellular carcinoma, left lobe with</p> <ol style="list-style-type: none"> 1) size: 12x12x9cm 2) Edmondson-Steiner grade III 3) compact and trabecular histologic pattern 4) single nodular type with perinodal spread 5) expanding growth pattern 6) extensive necrosis: more than 70% of total volume 7) frequent venous invasion 8) intact intrahepatic resection margin(safety margin 1cm) 9) chronic hepatitis, B-viral, with mild inflammatory activity (Grade II) and septal fibrosis(Stage III) <p>2. Gallbladder, separately submitted: autolytic change without tumor extension.</p>	III
9	B7,8	m	72	hepatocellular carcinoma	<p>1. Liver, right, lobectomy: hepatocellular carcinoma, in right lobe with</p> <ol style="list-style-type: none"> 1) size: 12x7x7cm 2) Edmondson Steiner grade II to III 3) macrotrabecular and adenoid pattern 4) single nodular type with perinodal spread involving hepatic capsule 5) expanding growth and intrahepatic metastasis 6) necrosis of total volume: above 70% 7) frequent vascular invasion 8) intact resection margin(safety margin 0.5cm) 9) chronic hepatitis, B viral, with minimal inflammatory activity(Grade I) and macronodular cirrhosis(Stage IV) <p>2. Gallbladder, cholecystectomy, separately submitted: free from tumor extension.</p>	III

A204 II : Liver cancer tissues

No	Coordinate	Sex	Age	Key word	Histological Diagnosis	Japanese stage
10	B9,10	m	46	hepatocellular carcinoma	<p>1. Liver, wedge resection: hepatocellular carcinoma with</p> <ol style="list-style-type: none"> 1) size: 4.5x3.5x3cm 2) Edmondson Steiner grade III 3) Single nodular type with perinodal growth 4) Expanding growth without capsulation 5) intact resection margin(safety margin: less than 2mm) 6) chronic gastritis with mild inflammatory activity(Grade II) and septal fibrosis(Stage III) by Ludwing classification <p>2. Gallbladder, cholecystctomy: chronic cholecystitis without tumor metastasis.</p>	II
11	C1,2	m	42	hepatocellular carcinoma	<p>1. Liver, subsegment IV, resection: hepatocellular carcinoma with</p> <ol style="list-style-type: none"> 1) size: 2.5cm in the greatest diameter 2) nodular type with perinodal spread 3) expanding growth pattern and capsular involvement 4) histologic type: clear cell type 5) intact hepatic resection margin (safety margin: less than 2mm) 6) chronic hepatitis, B viral, with minimal inflammatory activity(Grade I) and septal fibrosis(Stage III) <p>2. Gallbladder, cholecystectomy, separately submitted: chronic cholecystitis without tumor metastasis.</p>	II

A204 II : Liver cancer tissues

No	Coordinate	Sex	Age	Key word	Histological Diagnosis	Japanese stage
12	C3,4	m	58	hepatocellular carcinoma	<p>1. Liver, segment VII, segmentectomy: hepatocellular carcinoma, with</p> <ol style="list-style-type: none"> 1) size: 4.5x4x3cm 2) Edmondson Steiner grade III 3) compact and trabecular histologic type 4) infiltrative type 5) vascular invasion 6) necrosis: about 40% of total volume 7) penetration of capsule and invasion to surrounding soft tissue 8) involvement at hepatic resection margin 9) surrounding liver showing chronic hepatitis, B viral, with mild inflammatory activity (grade II) and macro nodular cirrhosis (stage IV) <p>2. Gallbladder, cholecystectomy, separately submitted: fat necrosis without tumor extension</p> <p>3. Skeletal muscle, clinically from diaphragm, separately submitted: extension of the tumor</p> <p>4. Tissue, clinically from vessel, biopsy: hepatocellular carcinoma.</p>	III
13	C5,6	m	52	hepatocellular carcinoma	<p>Liver, segment VI and VII, segmentectomy: hepatocellular carcinoma, with</p> <ol style="list-style-type: none"> 1) size: 7cm in the greatest diameter 2) Edmondson Steiner grade I to II 3) Single nodular type without capsulation 4) extension coagulative necrosis: more than 70% of total volume 5) intact resection margin(safety margin: less than 1mm) 6) Non neoplastic liver showing chronic hepatitis, B viral, with mild inflammatory activity(Grade II) and early cirrhosis(Stage III), combined with alcohol induced change <p>2. Gallbladder, cholecystectomy, separately submitted: free from tumor extension.</p>	II

A204 II : Liver cancer tissues

No	Coordinate	Sex	Age	Key word	Histological Diagnosis	Japanese stage
14	C7,8	m	54	hepatocellular carcinoma	<p>1. Liver, central lobectomy: hepatocellular carcinoma with</p> <ol style="list-style-type: none"> 1) size: 8.4cm in the greatest diameter 2) Edmondson Steiner grade II to IV type 3) mixed type showing expanding and infiltrative growth patterns 4) necrosis: more than 50% of total volume of tumor 5) invasion to liver capsule, perforated 6) intact hepatic resection margin: very close to mass, less than 2mm 7) vascular invasion <p>2. Gallbladder, cholecystectomy: autolysis.</p>	IVa
15	C9,10	m	53	hepatocellular carcinoma	<p>1. Liver, right, lobectomy: combined hepatocellular and cholangiocarcinoma, transitional type</p> <ol style="list-style-type: none"> 1) size: 5x4x3.5cm. 2) single nodular type with perinodal spread 3) expanding growth with encapsulation but focal invasion 4) vascular and hepatic capsule invasions 5) necrosis: about 30% of total volume 6) intact resection margins 7) surrounding liver showing chronic hepatitis, B-viral, with mild inflammatory activity(grade II: mild lobular and minimal portal activities) and portal fibrosis (stage I)) <p>2. Gallbladder, cholecystectomy: autolysis without tumor extension.</p>	II

A204 II : Liver cancer tissues

No	Coordinate	Sex	Age	Key word	Histological Diagnosis	Japanese stage
16	D1,2	m	58	hepatocellular carcinoma	<p>1. Liver, segment VII, subsegmentectomy: hepatocellular carcinoma with</p> <ol style="list-style-type: none"> 1) size: 4x4x3cm 2) Edmondson grade II to III 3) mixed histologic pattern composed of macrotrabecular and adenoid pattern 4) infiltrative growth pattern 5) necrosis: about 20% of total volume 6) capsular involvement 7) lymphovascular invasion 8) intact hepatic resection margin(safety margin: 3cm) 9) surrounding liver showing chronic hepatitis, B-viral, with moderate inflammatory activity(Grade III) and macronodular cirrhosis(Stage IV) by Ludwig classification. <p>2. Gallbladder, cholecystectomy: autolysis without tumor extension.</p>	II
17	D3,4	f	39	hepatocellular carcinoma	<p>1. Liver, right, lobectomy: hepatocellular carcinoma, ruptured with</p> <ol style="list-style-type: none"> 1) size: 16x16x8cm 2) Edmondson grade III 3) compact and macrotrabecular histologic type 4) marked necrosis(more than 90% of total volume) 5) capsular invasion and involvement at resection margin 6) vascular invasion 7) surrounding liver showing marked congestion with centrizonal ischemic necrosis <p>2. Liver and soft tissue, clinically unstated, separately submitted: totally necrotic and hemorrhagic material without viable tumor cells.</p>	II

A204 II : Liver cancer tissues

No	Coordinate	Sex	Age	Key word	Histological Diagnosis	Japanese stage
18	D5,6	m	48	hepatocellular carcinoma	<p>Liver, segment IV, segmentectomy: hepatocellular carcinoma with</p> <ol style="list-style-type: none"> 1) size: 3x3x2.5cm 2) Edmondson grade I to II 3) trabecular and adenoid histologic type 4) single nodular type with encapsulation and expanding growth 5) no vascular invasion 6) extensive necrosis(more than 90% of total volume) due to therapeutic chemoembolization 7) intact intrahepatic resection margin(safety margin, about 0.3cm) 8) non-neoplastic liver showing chronic hepatitis with moderate inflammatory activity(Grade III) and macronodular cirrhosis (Stage IV) 9) dysplastic nodules, low grade, multiple . 	II
19	D7,8	m	67	hepatocellular carcinoma	<ol style="list-style-type: none"> 1. Liver, VII segment, segmentectomy: hepatocellular carcinoma, with 1) size: 5x4.5x4.5cm 2) Edmondson grade I to II 3) single nodular type with expanding growth 4) no necrosis (less than 5% of total volume) 5) microvessel invasion 6) intact resection margin (safety margin: less than 0.2cm) 7) non-neoplastic liver showing chronic hepatitis, B-viral, with mild inflammatory activity (grade II) and cirrhosis (stage IV) 2. Gallbladder, cholecystectomy: free from tumor extension. 	II

A204 II : Liver cancer tissues

No	Coordinate	Sex	Age	Key word	Histological Diagnosis	Japanese stage
20	D9,10	m	36	hepatocellular carcinoma	<p>1. Liver, segmentectomy: hepatocellular carcinoma with</p> <ol style="list-style-type: none"> 1) size: 7x7x5.8cm 2) Edmondson grade II to III (moderately differentiated) 3) single nodular type with encapsulation and expanding growth 4) trabecular, macrotrabecular and compact histologic type 5) microvascular invasion 6) necrosis: more than 80% of total volume 7) capsular involvement 8) intact intrahepatic resection margin (safety resection margin:3mm) 9) non-neoplastic liver showing chronic hepatitis, B-viral, with mild inflammatory activity(grade II) and cirrhosis (stage IV) <p>2. Gallbladder, cholecystectomy, separately submitted: free from tumor extension.</p>	II
21	E1,2	f	39	hepatocellular carcinoma	<p>Liver, leftlobe, lobectomy: hepatocellular carcinoma with</p> <ol style="list-style-type: none"> 1) size: 5.5x5x4cm 2) moderate differentiated (Edmondson grade II to III) 3) macrotrabecular and compact histologic types 4) infiltrative type with portal vein invasion and multiple intrahepatic metastasis 5) necrosis: about 40% of total volume 6) microvascular invasion 7) intact hepatic and bile duct resection margins 8) non-neoplastic liver showing chronic hepatitis, B-viral, with mild inflammatory activity (grade II) and septal fibrosis (stage III) by Ludwig classification. 	III

A204 II : Liver cancer tissues

No	Coordinate	Sex	Age	Key word	Histological Diagnosis	Japanese stage
22	E3,4	m	55	hepatocellular carcinoma	<p>1. Liver, segmentectomy: hepatocellular carcinoma with</p> <ol style="list-style-type: none"> 1) size: 3.5x3.2x2.3cm 2) histologic type: trabecular type 3) Edmondson grade III with perinodal spread 4) single nodular type 5) vascular invasion 6) necrosis: approximately 60% of total volume 7) intact hepatic resection margin 8) chronic hepatitis, B-viral, with moderate inflammatory activity(grade III) and early cirrhosis (stage III) showing multiple dysplastic nodules <p>2. Gallbladder, cholecystectomy: no pathological diagnosis</p> <p>3. Soft tissue, separately submitted: fat necrosis with calcification.</p>	II
23	E5,6	f	42	hepatocellular carcinoma	<p>1. Liver and gallbladder, lobectomy and cholecystectomy: hepatocellular carcinoma with</p> <ol style="list-style-type: none"> 1) size: 5x5x4.5cm 2) Edmondson grade I to II 3) compact and trabecular histologic pattern 4) single nodular type (expanding growth) and focal invasion 5) necrosis: about 40% of total volume 6) no vascular invasion 7) intact hepatic resection margin 8) non-neoplastic liver showing chronic hepatitis, B-viral, with minimal inflammatory activity (grade I) and cirrhosis (stage IV) <p>2. Gallbladder: free from tumor extension.</p>	II

A204 II : Liver cancer tissues

No	Coordinate	Sex	Age	Key word	Histological Diagnosis	Japanese stage
24	E7,8	m	52	hepatocellular carcinoma	<p>1. Liver, right lobe, lobectomy and cholecystectomy: hepatocellular carcinoma, ruptured with</p> <ol style="list-style-type: none"> 1) size: 15cm in the greatest diameter 2) Edmondson grade II 3) macrotrabecular type 4) single nodular type with capsulation and expanding growth 5) necrosis: less than 20% of total volume 6) vascular invasion 7) necrosis: about 20% of total volume 8) non-neoplastic liver showing chronic hepatitis, B-viral, mild inflammatory activity (grade II) and early cirrhosis (stage III) <p>2. Gallbladder: autolysis without tumor metastasis.</p>	II
25	E9,10	m	61	hepatocellular carcinoma	<p>Liver, segment II, segmental resection:</p> <ol style="list-style-type: none"> 1) Hepatocellular carcinoma, moderate differentiated (Edmondson grade 2 to 3) with <ul style="list-style-type: none"> - size : 5x3cm - single nodular expansile growth with focal invasion - histologic finding showing macrotrabecular and solid pattern - venous and ductal invasion - capsular invasion - intact resection margin (1.3cm in apart from tumor) 2) nonneoplastic background liver showing macronodular cirrhosis with moderate inflammatory activity, B viral. 	II

A204 II : Liver cancer tissues

No	Coordinate	Sex	Age	Key word	Histological Diagnosis	Japanese stage
26	F1,2	m	55	hepatocellular carcinoma	<p>1. Liver, right lobe, lobectomy: Hepatocellular carcinoma with</p> <ol style="list-style-type: none"> 1) size: 9.5x9.5x9cm 2) Edmondson Steiner grade I to II 3) Trabecular and adenoid histologic type 4) single nodular type with expanding growth 5) focal necrosis: less than 10% of total volume 6) intact intrahepatic resection margin but invades capsule 7) chronic hepatitis, B viral, with mild inflammatory activity (Grade II) and early cirrhosis(Stage III) <p>2. Gallbladder, cholecystectomy: cholelithiasis without tumor.</p>	II
27	F3,4	m	61	hepatocellular carcinoma	<p>Liver, right, subsegmentectomy: hepatocellular carcinoma with</p> <ol style="list-style-type: none"> 1) expanding gross type 2) microscopically trabecular and pseudoacinar pattern 3) Edmonson-Steiner nuclear grade: 3 4) clean surgical margin 5) nonneoplastic liver: macronodular cirrhosis <p><Additional report> Non neoplastic liver: cirrhosis, macronodular, B-viral, with prominent ductular proliferation and iron pigment deposition in the hepatocytes.</p>	II

A204 II : Liver cancer tissues

No	Coordinate	Sex	Age	Key word	Histological Diagnosis	Japanese stage
28	F5,6	m	50	hepatocellular carcinoma	<p>Liver, segmentectomy: hepatocellular carcinoma with 1) nodular spreading gross type 2) mixed trabecular and pseudoacinar microscopic pattern 3) Edmonson-Steiner's nuclear grade: 2 4) glisson's capsule: free of tumor 5) no portal vein invasion 6) remaining liver: chronic hepatitis, inactive, said to B-viral</p> <p><Additional report> Remaining liver: 1) chronic hepatitis, inactive, said to be B-viral. 2) fatty change, macro and microvesicular, 1+.</p>	II
29	F7,8	f	60	hepatocellular carcinoma	<p>1. Liver, segmentectomy: hepatocellular carcinoma with 1) expanding type gross type 2) Edmondson-Steiner's grade : 1 3) predominantly trabecular microscopic type 4) no tumor necrosis 5) no portal and vascular invasion 6) glisson's capsule: free of tumor 7) resection margin: free of tumor 8) non-neoplastic liver: - chronic hepatitis, mildly active with bridging fibrosis - solitary non-neoplastic cyst</p> <p>2. Gallbladder, cholecystectomy: chronic nonspecific inflammation.</p>	II

A204 II : Liver cancer tissues

No	Coordinate	Sex	Age	Key word	Histological Diagnosis	Japanese stage
30	F9,10	m	50	hepatocellular carcinoma	<p>1. Liver, right, lobectomy: hepatocellular carcinoma with</p> <ol style="list-style-type: none"> 1) expanding gross type. 2) Edmondson-Steiner's nuclear grade III. 3) trabecular and pseudoacinar microscopic pattern. 4) necrosis: 30%. 5) peliosis hepatitis. 6) focal capsule invasion. 7) frequent vascular invasion. 8) resection margin: Free of tumor. 9) remaining liver: <ul style="list-style-type: none"> - chronic hepatitis, inactive, B-viral. - bile duct dilatation with epithelial hyperplasia and mural gland proliferation, possibly due to obstruction. 10) cavernous hemangioma <p>2. Gallbladder: no pathological diagnosis.</p>	III
31	G1,2	m	51	hepatocellular carcinoma	<p>1. Liver, right posterior segmentectomy: hepatocellular carcinoma with</p> <ol style="list-style-type: none"> 1) expanding gross type 2) Edmonson-Steiner nuclear grade 2 3) trabecular and pseudoacinar microscopic pattern 4) necrosis about 10% 5) resection margin: free of tumor 6) remaining liver: cirrhosis, macronodular, active, said to be B-viral <p>2. Gallbladder: chronic nonspecific inflammation.</p>	II

A204 II : Liver cancer tissues

No	Coordinate	Sex	Age	Key word	Histological Diagnosis	Japanese stage
32	G3,4	m	56	hepatocellular carcinoma	<p>1. Liver, right lobectomy: hepatocellular carcinoma with</p> <ol style="list-style-type: none"> 1) nodular spreading gross type 2) Edmondson-Steiner nuclear grade I to II 3) predominant trabecular microscopic pattern 4) portal vein invasion 5) tumor necrosis about 50% 6) glisson's capsule: focal invasion by tumor with adhesion of skeletal muscle (diaphragm ?) 7) remaining liver: cirrhosis, macronodular, inactive, B-viral 8) resection margin: extension of tumor <p>2. Gallbladder: autolysis</p> <p>3. Portal vein: hepatocellular carcinoma.</p>	IVa
33	G5,6	f	32	hepatocellular carcinoma	<p>1. Liver, left, lobectomy: hepatocellular carcinoma with</p> <ol style="list-style-type: none"> 1) nodular confluent gross type 2) Edmondson-Steiner nuclear grade II 3) predominant trabecular microscopic type 4) clear cell change 5) glisson's capsule: free of tumor 6) resection margin: free of tumor 7) remaining liver: chronic hepatitis, inactive, B-viral 8) hemangioma <p>2. Gallbladder, cholecystectomy: chronic nonspecific inflammation.</p>	II

A204 II : Liver cancer tissues

No	Coordinate	Sex	Age	Key word	Histological Diagnosis	Japanese stage
34	G7,8	m	57	hepatocellular carcinoma	<p>1. Liver, lobectomy: hepatocellular carcinoma with</p> <ol style="list-style-type: none"> 1) expanding gross type 2) Edmondson steiner nuclear grade 3 3) trabecular and pseudoacinar microscopic pattern 4) glisson's capsule: free of tumor 5) remaining liver: cirrhosis, macronodular, inactive, B-viral 6) resection margin, liver: free of tumor <p>2. Gallbladder: Autolysis.</p>	I
35	G9,10	m	47	hepatocellular carcinoma	<p>1. Liver, segmentectomy: hepatocellular carcinoma with</p> <ol style="list-style-type: none"> 1) nodular spreading gross type 2) predominant trabecular pattern 3) Edmonson-Steiner nuclear grade II 4) Ischemic necrosis about 60% 5) rupture of the glison's capsule with fibrin deposition 6) remain liver: chronic hepatitis, inactive, B-viral 7) resection margin: free of tumor <p>2. Gallbladder: marked autolysis.</p>	II
36	H7	m	57	non-neoplastic	non-neoplastic from A9,10	
37	H8	m	40	non-neoplastic	non-neoplastic from B1,2	
38	H9	m	39	non-neoplastic	non-neoplastic from B5,6	
39	H10	m	46	non-neoplastic	non-neoplastic from B9,10	
40	I7	m	52	non-neoplastic	non-neoplastic from C5,6	
41	I8	m	53	non-neoplastic	non-neoplastic from C9,10	
42	I9	m	48	non-neoplastic	non-neoplastic from D5,6	
43	I10	m	67	non-neoplastic	non-neoplastic from D7,8	