

(formalin fixed)

For research use only

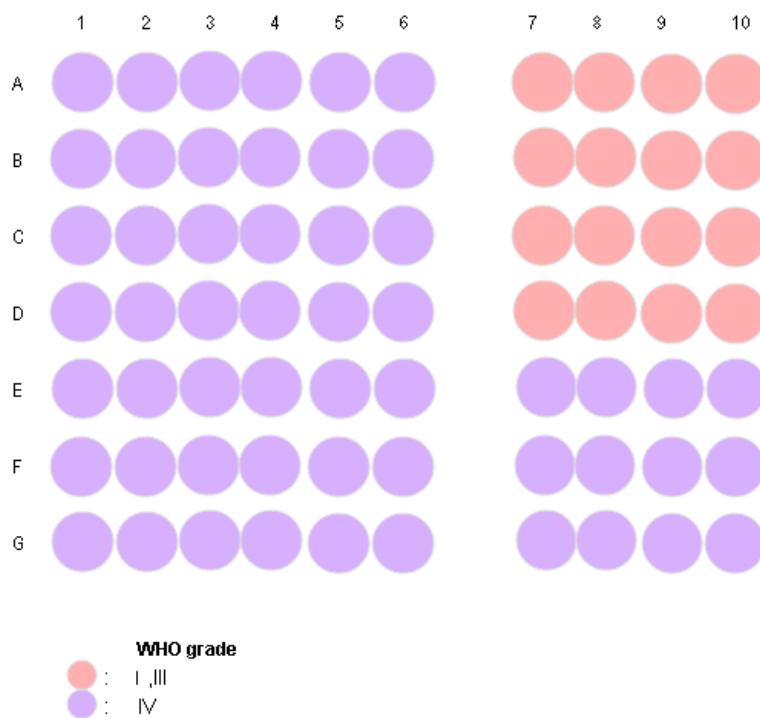
Specifications:

- No. of cases: 35
- Tissue type: Brain cancer tissues
- No. of spots: 2 spots from each cancer case (70 spots)
- Total spots: 70
- Corresponding normal tissues with cancers:
- Diameter: 1.0 mm

Documents:

- Product specification: layout, summary of tissue spots
- H&E stained images
- Detailed pathological information

Layout:



(formalin fixed)

For research use only

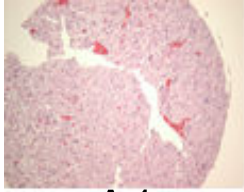
Summary of tissue spots

No	Coordinate		Sex	Age	Key Word
1	A	1,2	m	27	Brain: glioblastoma
2	A	3,4	f	62	Brain: glioblastoma
3	A	5,6	f	67	Brain: glioblastoma
4	A	7,8	f	6	Cerebellum: pilocytic astrocytoma
5	A	9,10	f	36	Brain: pilocytic astrocytoma
6	B	1,2	f	58	Brain: glioblastoma
7	B	3,4	f	61	Brain: glioblastoma
8	B	5,6	m	48	Brain: glioblastoma
9	B	7,8	f	5	Cerebellum: pilocytic astrocytoma
10	B	9,10	m	9	Cerebellar: pilocytic astrocytoma
11	C	1,2	f	53	Brain: glioblastoma
12	C	3,4	f	65	Brain: glioblastoma
13	C	5,6	m	39	Brain: glioblastoma
14	C	7,8	f	34	Brain: glioblastoma multiforme
15	C	9,10	m	44	Cerebrum: anaplastic astrocytoma
16	D	1,2	f	55	Brain: glioblastoma
17	D	3,4	f	55	Brain: glioblastoma multiforme
18	D	5,6	m	45	Brain: glioblastoma multiforme
19	D	7,8	f	29	Brain: astrocytoma
20	D	9,10	f	41	Brain: anaplastic astrocytoma
21	E	1,2	f	56	Brain: gliosarcoma Brain: glioblastoma
22	E	3,4	f	30	Brain: glioblastoma multiforme Brain: gemistocytic astrocytoma
23	E	5,6	f	55	Brain: glioblastoma
24	E	7,8	m	45	Brain: glioblastoma multiforme
25	E	9,10	f	30	Brain: glioblastoma multiforme
26	F	1,2	f	73	Brain: glioblastoma
27	F	3,4	f	67	Brain: glioblastoma multiforme
28	F	5,6	m	59	Brain: glioblastoma
29	F	7,8	m	62	Cerebrum: glioblastoma
30	F	9,10	m	69	Brain: glioblastoma multiforme
31	G	1,2	f	30	Brain: glioblastoma multiforme
32	G	3,4	m	58	Brain: glioblastoma
33	G	5,6	f	44	Cerebrum: glioblastoma
34	G	7,8	f	57	Brain: glioblastoma Brain: gliosarcoma
35	G	9,10	m	32	Brain: glioblastoma

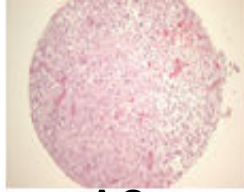
(formalin fixed)

For research use only

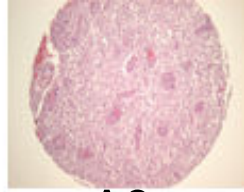
**QC sheet_LOT#122120805201
Hematoxylin and Eosin staining**



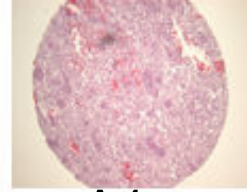
A1



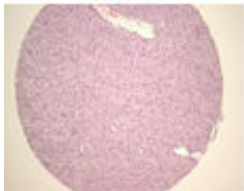
A2



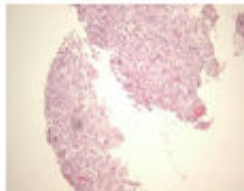
A3



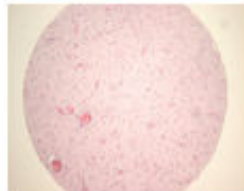
A4



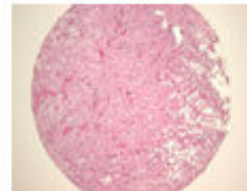
A5



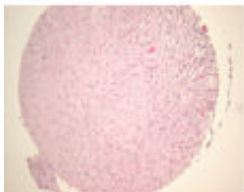
A6



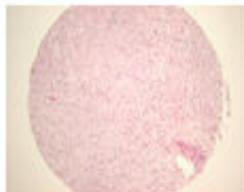
A7



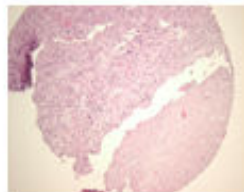
A8



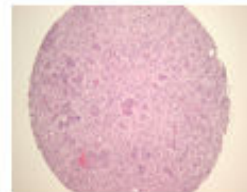
A9



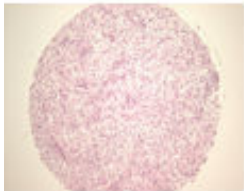
A10



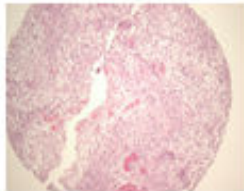
B1



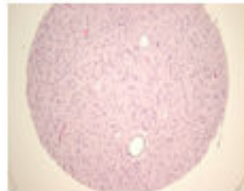
B2



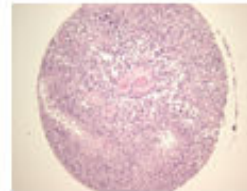
B3



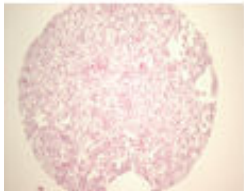
B4



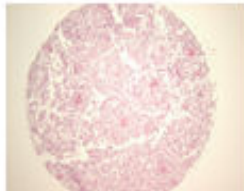
B5



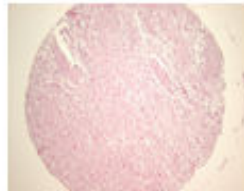
B6



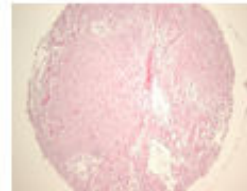
B7



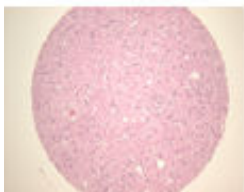
B8



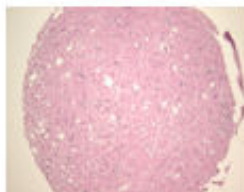
B9



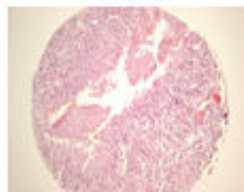
B10



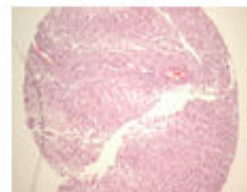
C1



C2



C3

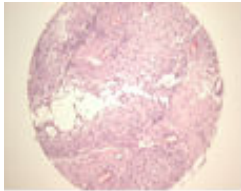


C4

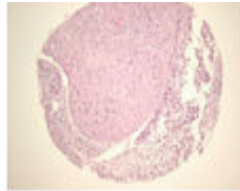
(formalin fixed)

For research use only

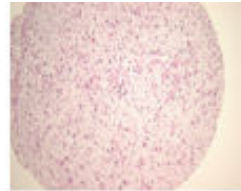
**QC sheet_LOT#122120805201
Hematoxylin and Eosin staining**



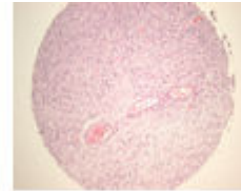
C5



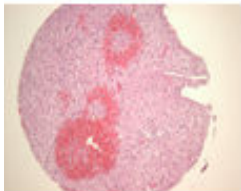
C6



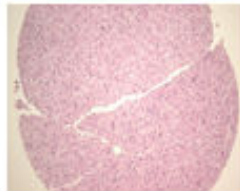
C7



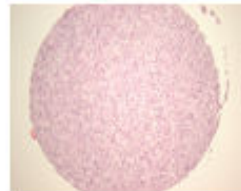
C8



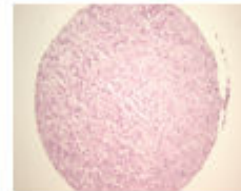
C9



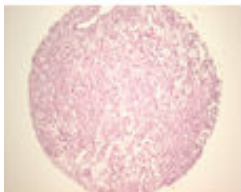
C10



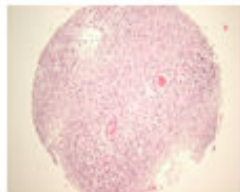
D1



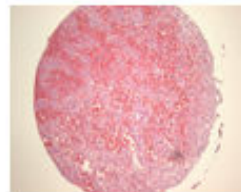
D2



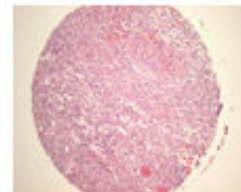
D3



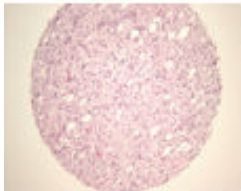
D4



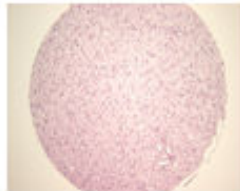
D5



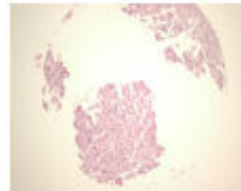
D6



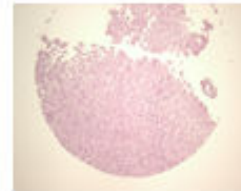
D7



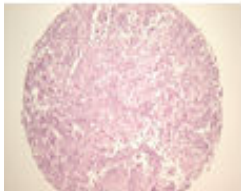
D8



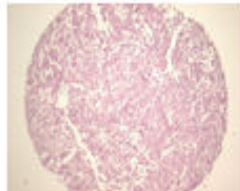
D9



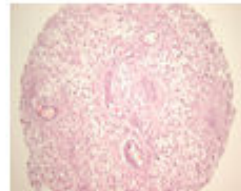
D10



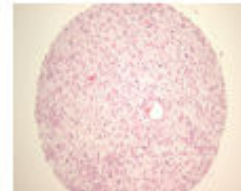
E1



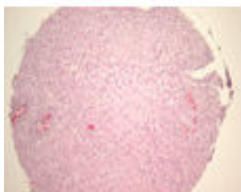
E2



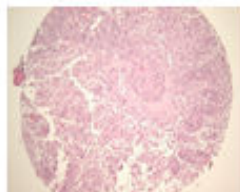
E3



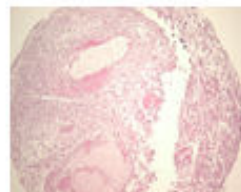
E4



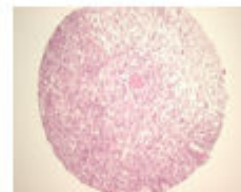
E5



E6



E7

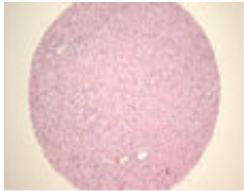


E8

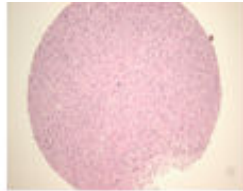
(formalin fixed)

For research use only

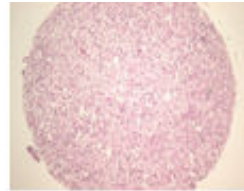
**QC sheet_LOT#122120805201
Hematoxylin and Eosin staining**



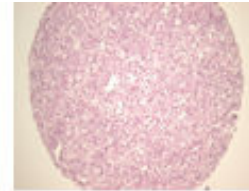
E9



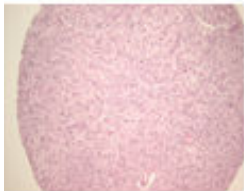
E10



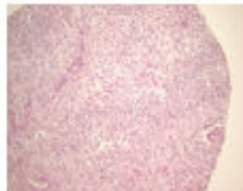
F1



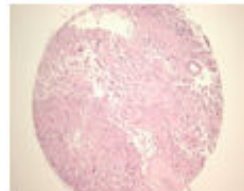
F2



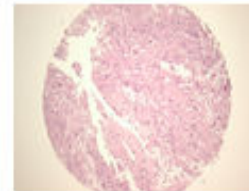
F3



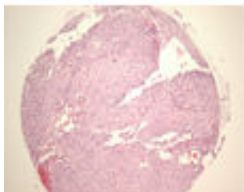
F4



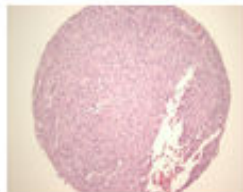
F5



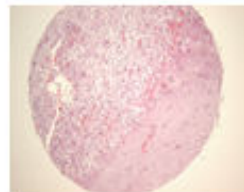
F6



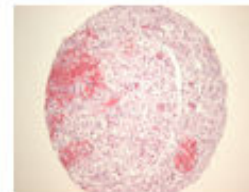
F7



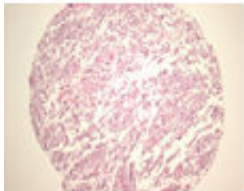
F8



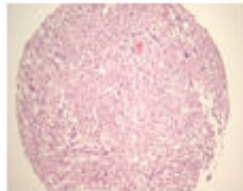
F9



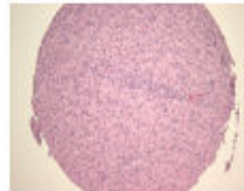
F10



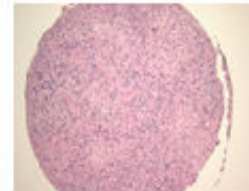
G1



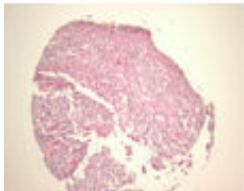
G2



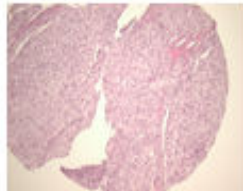
G3



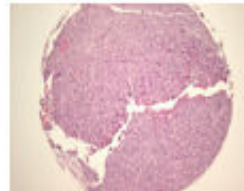
G4



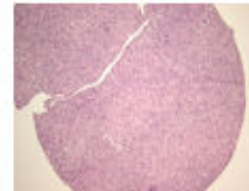
G5



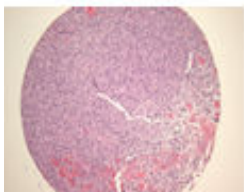
G6



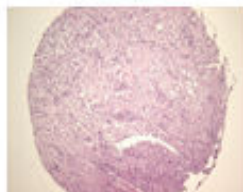
G7



G8



G9



G10

No	Coordinate	Sex	Age	Key Word	Histological Diagnosis	
1	A	1,2	m	27	brain: glioblastoma	Brain, thalamus, tumor removal: glioblastoma.
2	A	3,4	f	62	brain: glioblastoma	Brain, left frontal lobe, tumor removal and biopsy: glioblastoma.
3	A	5,6	f	67	brain: glioblastoma	Brain, lateral ventricle and corpus callosum, removal: consistent with glioblastoma.
4	A	7,8	f	6	cerebellum: pilocytic astrocytoma	Cerebellar mass, removal: pilocytic astrocytoma, WHO grade I.
5	A	9,10	f	36	brain: pilocytic astrocytoma	Brain, periventricular, removal: pilocytic astrocytoma.
6	B	1,2	f	58	brain: glioblastoma	Brain, frontal area, excision: glioblastoma.
7	B	3,4	f	61	brain: glioblastoma	Brain mass, right posterooccipital, removal: 1) recurrent glioblastoma 2) radionecrosis of cortex and white matter.
8	B	5,6	m	48	brain: glioblastoma	Brain, left frontal area, tumor removal: glioblastoma.
9	B	7,8	f	5	cerebellum: pilocytic astrocytoma	Cerebellum, removal: 1) pilocytic astrocytoma 2) results of immunohistochemical stains: GFAP(+). EMA (-). MIB-1(focal + (low %).
10	B	9,10	m	9	cerebellar: pilocytic astrocytoma	Cerebellar mass, removal: pilocytic astrocytoma (WHO grade 1).
11	C	1,2	f	53	brain: glioblastoma	Brain, left frontal lobe, tumor removal: glioblastoma.
12	C	3,4	f	65	brain: glioblastoma	Brain, frontotemporal area, removal: glioblastoma (with gemistocytic features).
13	C	5,6	m	39	brain: glioblastoma	Brain, frontal lobe, tumor removal: glioblastoma.
14	C	7,8	f	34	brain: glioblastoma multiforme	Brain, frontal, tumor removal: glioblastoma multiforme.
15	C	9,10	m	44	cerebrum: anaplastic astrocytoma	Cerebrum, site not specified, subtotal removal of tumor: anaplastic astrocytoma (with primary white matter involvement in a case of glioblastoma).
16	D	1,2	f	55	brain: glioblastoma	Brain, left parietooccipital area, removal: astrocytoma grade 4 (glioblastoma).
17	D	3,4	f	55	brain: glioblastoma multiforme	Brain, tumor removal: glioblastoma multiforme.
18	D	5,6	m	45	brain: glioblastoma multiforme	Brain, right lateral, tumor removal: glioblastoma multiforme.
19	D	7,8	f	29	brain: astrocytoma	Brain, temporal, removal: diffuse infiltrative fibrillary astrocytoma, WHO grade III(anaplastic
20	D	9,10	f	41	brain: anaplastic astrocytoma	Brain, tumor removal: anaplastic astrocytoma (WHO grade III) Note: Neoplastic cells shows moderately pleomorphic nuclei and mitosis. No necrosis and vascular endothelial proliferation is seen.
21	E	1,2	f	56	brain: gliosarcoma brain: glioblastoma	Brain, parietal, tumor removal: gliosarcoma arising in glioblastoma (feigin tumor) Note: GFAP(+), Vimentin(+), CK low and high(-), EMA(-).
22	E	3,4	f	30	brain: glioblastoma multiforme brain: gemistocytic astrocytoma	Brain, tumor removal: glioblastoma multiforme arising in anaplastic gemistocytic astrocytoma.

No	Coordinate		Sex	Age	Key Word	Histological Diagnosis
23	E	5,6	f	55	brain: glioblastoma	Brain, left temporal, removal: 1) tumor mass: glioblastoma 2) choroid plexus: free of neoplasm.
24	E	7,8	m	45	brain: glioblastoma multiforme	Brain mass, removal: glioblastoma multiforme (with extensive necrosis).
25	E	9,10	f	30	brain: glioblastoma multiforme	Cerebral mass, removal: glioblastoma multiforme.
26	F	1,2	f	73	brain: glioblastoma	Brain, left occiput, frozen excision: glioblastoma.
27	F	3,4	f	67	brain: glioblastoma multiforme	Brain, temporal area, left, removal: glioblastoma multiforme.
28	F	5,6	m	59	brain: glioblastoma	Brain, parietal lobe, frozen biopsy: glioblastoma.
29	F	7,8	m	62	cerebrum: glioblastoma	Cerebral mass, occipital lobe, removal: glioblastoma.
30	F	9,10	m	69	brain: glioblastoma multiforme	Brain, left frontal lobe, tumor removal: glioblastoma multiforme.
31	G	1,2	f	30	brain: glioblastoma multiforme	Brain tumor, removal: glioblastoma multiforme.
32	G	3,4	m	58	brain: glioblastoma	Brain, left temporal lobe, removal: glioblastoma.
33	G	5,6	f	44	cerebrum: glioblastoma	Cerebrum, right temporal lobe, removal of tumor: glioblastoma.
34	G	7,8	f	57	brain: glioblastoma brain: gliosarcoma	Brain mass, left fronto-temporal, removal: recurrent glioblastoma (with gliosarcomatous component).
35	G	9,10	m	32	brain: glioblastoma	1. Brain, parietal lobe, right, curettage: glioblastoma with meningeal involvement 2. Dura, excision: extension of glioblastoma.